

# FOR LEASE

## 2+/- AC Yard Only Paved - Fenced - Gated

### Minnehaha Corporate Center 4220 NE Minnehaha St. Vancouver, WA 98661

#### Yard:

2+/- AC

Paved - Fenced - Gated

Easy Access

Large Entrance

Zoning: Light Industrial

Located in a  
Growing Industrial Area

#### Driving & Access:

- I-5 2.25 miles
- I-205 2.25 miles
- SR500 1.75 miles
- PDX 10 Minutes

Located in Central Clark County



**Kelly D. Shea**

Direct: 360-823-5110

Cell: 360-921-3710

Kelly@CBCIndustrialProperties.com

**CBC  
Industrial Properties**

**Industrial Property Specialist**

*Top Producer*

Sales & Leasing

Development

Investment Property

### LEASE RATE:

## \$6,000 Mo.

(no triple net fees)



**JENKINS & ASSOCIATES**

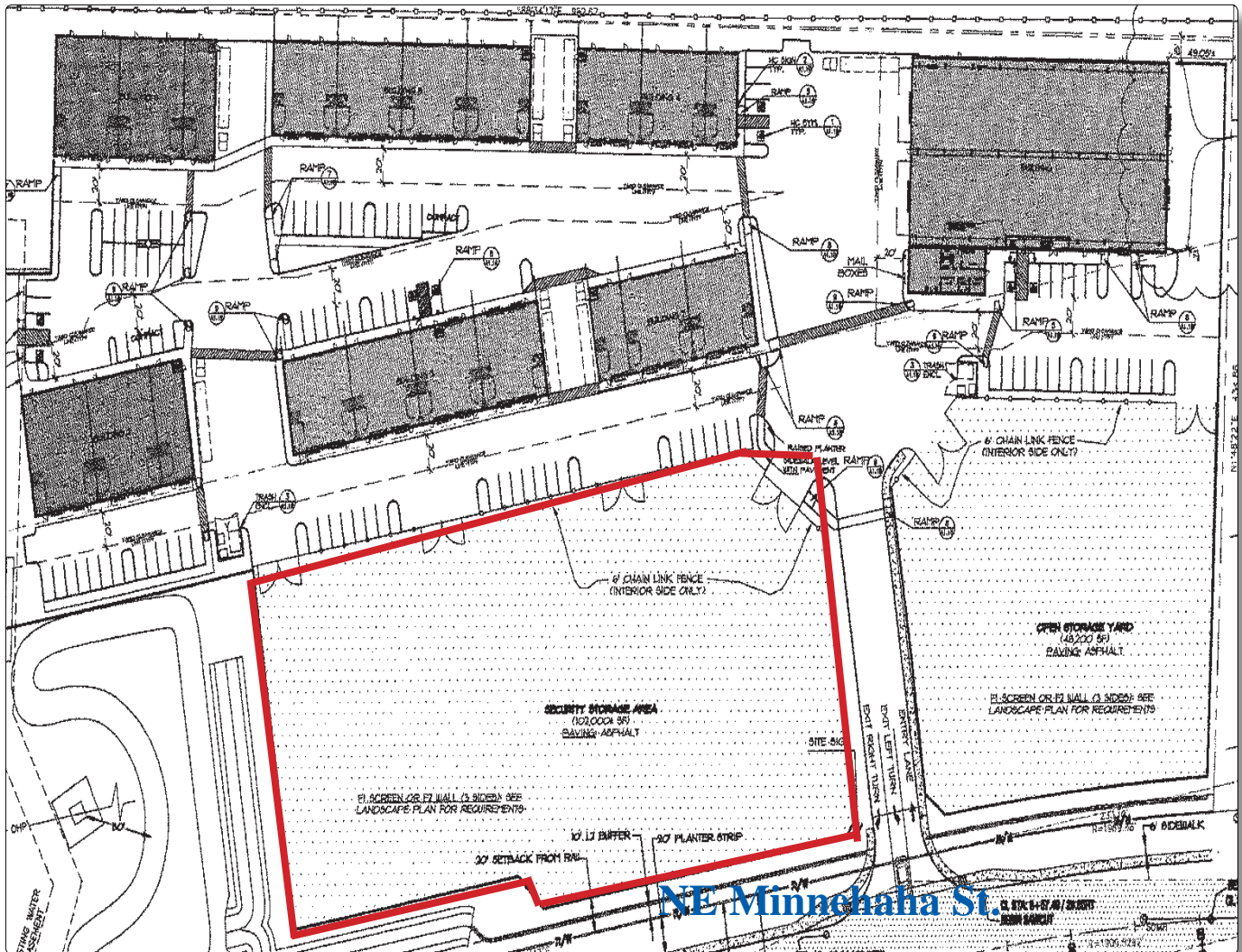


**300 W 15th St., Ste 201 - Vancouver, WA 98660**

© 2008 Coldwell Banker Real Estate LLC. Coldwell Banker Commercial® is a registered trademark licensed to Coldwell Banker Real Estate LCC. An Equal Opportunity Company. Each Office Is Independently Owned And Operated

# Minnehaha Corporate Center

4220 NE Minnehaha St. Vancouver, WA 98661



**CBC**  
**Industrial Properties**

**Kelly D. Shea**  
Direct: 360-823-5110  
Cell: 360-921-3710  
[Kelly@CBCIndustrialProperties.com](mailto:Kelly@CBCIndustrialProperties.com)

Industrial Property Specialist  
*Top Producer*  
Sales & Leasing  
Investment Properties  
Development