

PROPERTY DESCRIPTION REPORT

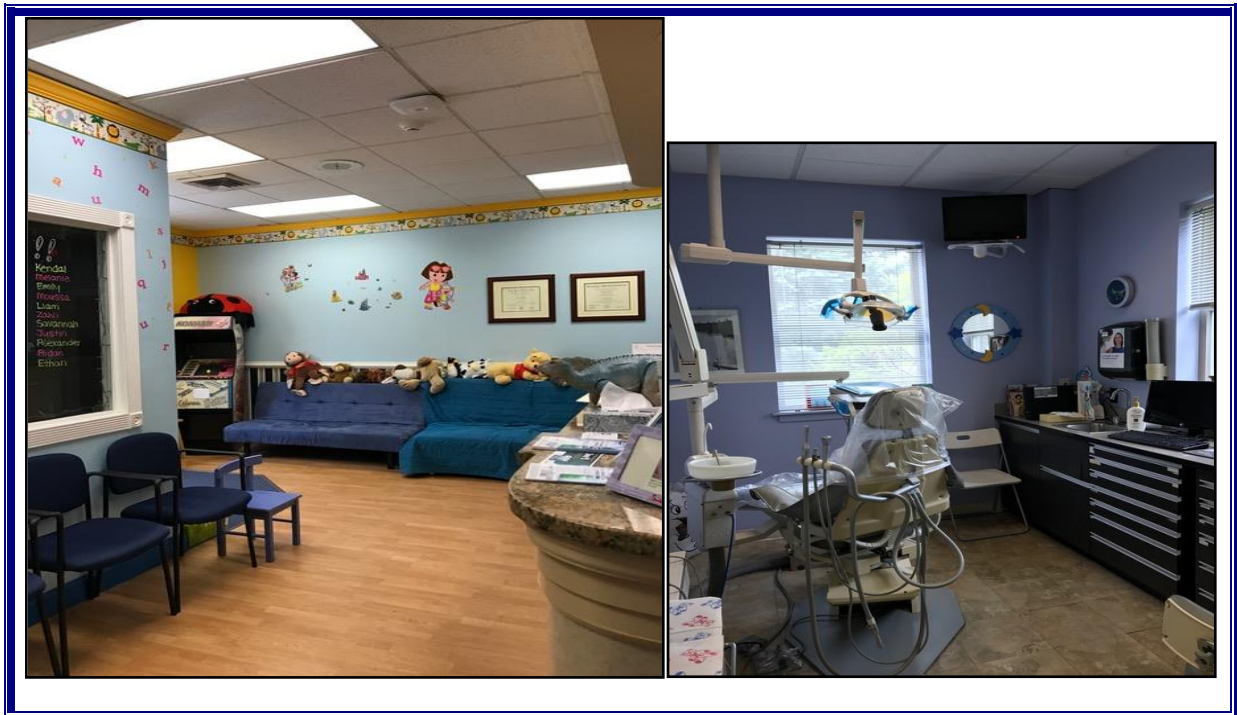
660 KINDERKAMACK ROAD
ORADELL, NJ

PHYSICAL DESCRIPTION

SF Available: 1,903
Total SF: 17,000
Office Space: 1,903
Lot Size: 1.43
Heat: GAS
Zoning: OFF
Parking Spaces: 5/1000

FINANCIAL INFORMATION

For Sale: N
Sale Price:
Lease Price: \$19.75/ SF
Taxes/CAM/Other: plus proportional
share of utilities and
increases to Base Year CAM & Op. Expenses



WELL MAINTAINED OFFICE BUILDING. PROFESSIONALLY RENOVATED AND DECORATED. LANDSCAPED PROPERTY WITH ROCK GARDEN, TREES, FLOWERS. ON WELL -TRAVELLED ROAD WITH GOOD VISIBILITY. ATTRACTIVE CORNER UNIT WITH EXPOSURE AND SIGNAGE ON KINDERKAMACK ROAD. CURRENTLY A DENTAL OFFICE.

NIA National Realty, Inc.

Call: Nina Bianco

Office: (201) 336-1211

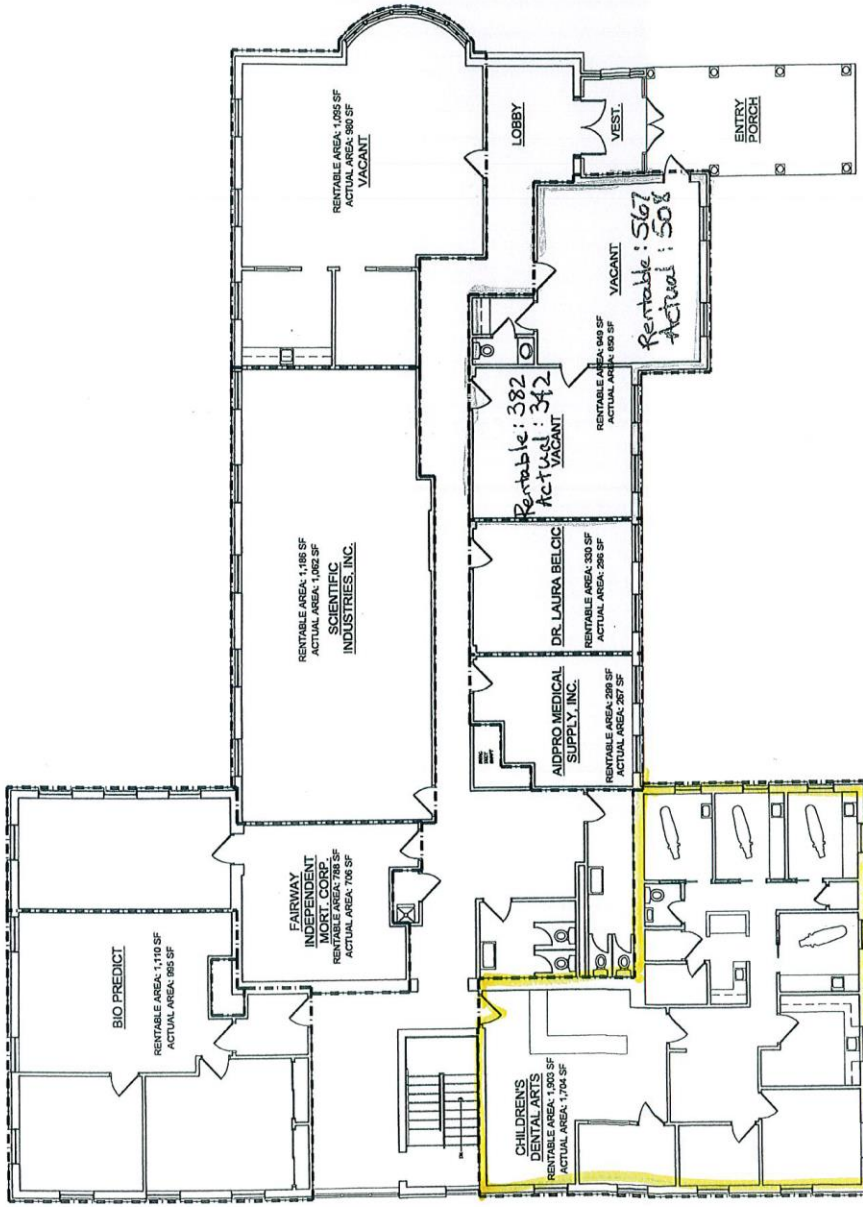
Fax: (201) 845-3012

Email: nbianco@nianationalrealty.com

Please visit our web site at www.nianationalrealty.com

Subject to errors, omissions, changes, prior sale or withdrawal, all without notice.

NIA



○ FIRST FLOOR PLAN - WITH REVISED TENANT FLOOR AREAS
 2/20/09