

FOR LEASE

7479 WALTON ROAD ROCKFORD, ILLINOIS

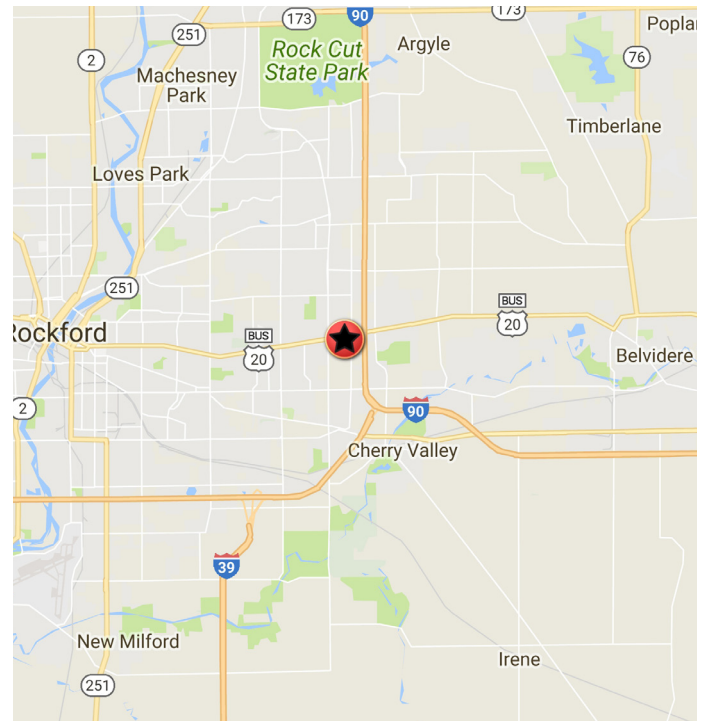


PROPERTY FEATURES

- + Up to 2,758 SF of office space available (may be divided)
- + Attractive building near Rockford's prime retail/hotel corridor
- + Excellent for professional office uses
- + Conveniently located on Bell School/Walton Roads near Walmart
- + Farmers Insurance and Edward Jones co-tenants
- + Minutes away to E. State Street and I-90
- + Plentiful parking on site, plus additional parking leased from adjacent hotel
- + Lease rate: \$12.00/SF/YR NNN



LOCATION MAP



CONTACT

KAREN WALSH, CCIM

First Vice President
+1 815 218 3438
karen.walsh@cbre.com

www.cbre.com/karen.walsh

CBRE

FOR LEASE 7479 WALTON RD, ROCKFORD, IL



LOCATION



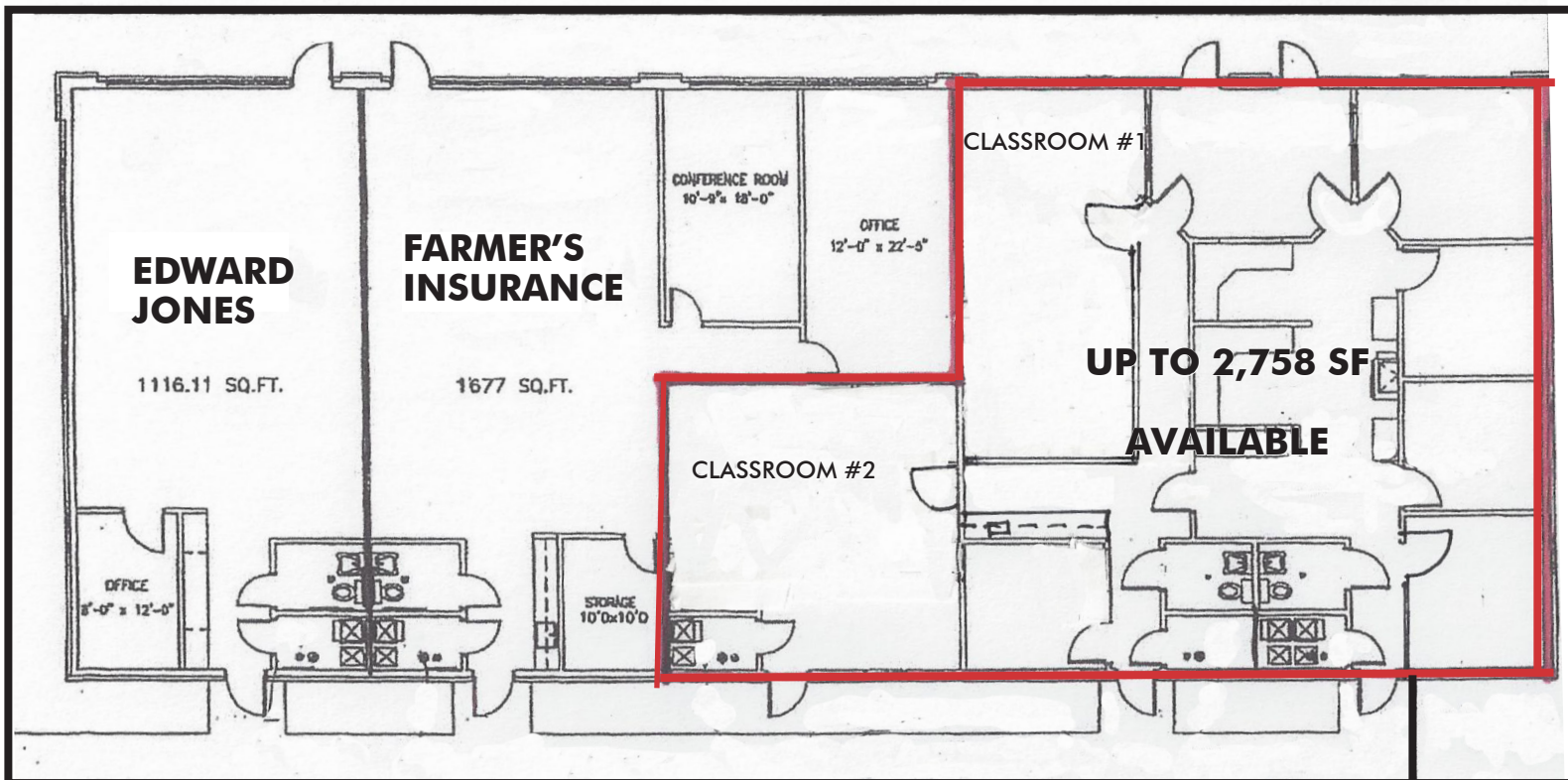
© 2019 CBRE, Inc. The information contained in this document has been obtained from sources believed reliable. While CBRE, Inc. does not doubt its accuracy, CBRE, Inc. has not verified it and makes no guarantee, warranty or representation about it. It is your responsibility to independently confirm its accuracy and completeness. Any projections, opinions, assumptions or estimates used are for example only and do not represent the current or future performance of the property. The value of this transaction to you depends on tax and other factors which should be evaluated by your tax, financial and legal advisors. You and your advisors should conduct a careful, independent investigation of the property to determine to your satisfaction the suitability of the property for your needs. Photos herein are the property of their respective owners and use of these images without the express written consent of the owner is prohibited. CBRE and the CBRE logo are service marks of CBRE, Inc. and/or its affiliated or related companies in the United States and other countries. All other marks displayed on this document are the property of their respective owners.

FOR LEASE

7479 WALTON RD, ROCKFORD, IL



FLOOR PLAN



www.cbre.com/karen.walsh

CBRE

FOR LEASE

7479 WALTON ROAD, ROCKFORD, IL



AERIAL

