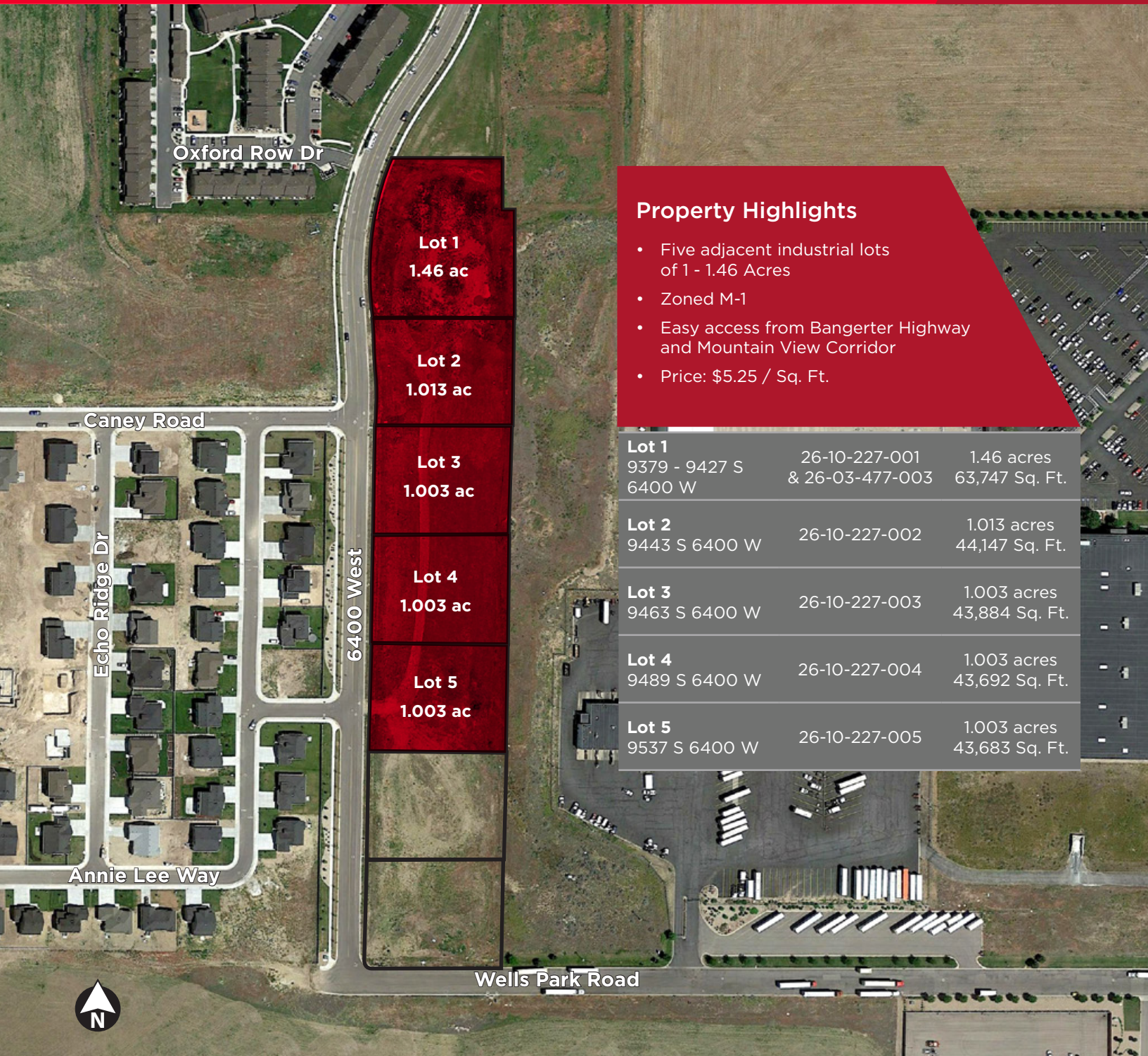




**CUSHMAN &
WAKEFIELD**
Commerce

INDUSTRIAL LOTS FOR SALE

9379 - 9537 South 6400 West
South Jordan, UT



Property Highlights

- Five adjacent industrial lots of 1 - 1.46 Acres
- Zoned M-1
- Easy access from Bangerter Highway and Mountain View Corridor
- Price: \$5.25 / Sq. Ft.

Lot 1 9379 - 9427 S 6400 W	26-10-227-001 & 26-03-477-003	1.46 acres 63,747 Sq. Ft.
Lot 2 9443 S 6400 W	26-10-227-002	1.013 acres 44,147 Sq. Ft.
Lot 3 9463 S 6400 W	26-10-227-003	1.003 acres 43,884 Sq. Ft.
Lot 4 9489 S 6400 W	26-10-227-004	1.003 acres 43,692 Sq. Ft.
Lot 5 9537 S 6400 W	26-10-227-005	1.003 acres 43,683 Sq. Ft.

Paul Westenskow
Senior Director
+1 801 303 5557
pweskenskow@comre.com

Kyle McMullin
Senior Director
+1 801 303 5480
kcmullin@comre.com

170 South Main Street
Suite 1600
Salt Lake City, UT 84101
Main +1 801 322 2000
Fax +1 801 322 2040
comre.com

Independently Owned and Operated / A Member of the Cushman & Wakefield Alliance

Cushman & Wakefield Copyright 2016. No warranty or representation, express or implied, is made to the accuracy or completeness of the information contained herein, and same is submitted subject to errors, omissions, change of price, rental or other conditions, withdrawal without notice, and to any special listing conditions imposed by the property owner(s). As applicable, we make no representation as to the condition of the property (or properties) in question.
(path: G:\1 - Projects\Westenskow, P\1 - Flyers\9379-9537s6400w)



**CUSHMAN &
WAKEFIELD**
Commerce

INDUSTRIAL LOTS FOR SALE

9379 - 9537 South 6400 West
South Jordan, UT



Paul Westenskow
Senior Director
+1 801 303 5557
pweskenskow@comre.com

Kyle McMullin
Senior Director
+1 801 303 5480
kcmullin@comre.com

170 South Main Street
Suite 1600
Salt Lake City, UT 84101
Main +1 801 322 2000
Fax +1 801 322 2040
comre.com

Independently Owned and Operated / A Member of the Cushman & Wakefield Alliance

Cushman & Wakefield Copyright 2016. No warranty or representation, express or implied, is made to the accuracy or completeness of the information contained herein, and same is submitted subject to errors, omissions, change of price, rental or other conditions, withdrawal without notice, and to any special listing conditions imposed by the property owner(s). As applicable, we make no representation as to the condition of the property (or properties) in question.
(path: G:\1 - Projects\Westenskow, P\1 - Flyers\9379-9537s6400w)