



Industrial For Sale

Property Name:

Location: 28807 Reilly Road

City, State: Lyon Twp., MI

Cross Streets: Grand River Avenue

County: Oakland

Zoning: Hvy. Industrial

BUILDING SIZE / AVAILABILITY

Total Building Sq. Ft.: 8,800

Available Sq. Ft.: 8,800

Building Type: Built

Available Shop Sq. Ft.: 5,000

Available Office Sq. Ft.: 3,800

Mezzanine: 200

Office Dim: N/A

Shop Dim: N/A

PROPERTY INFORMATION

Clear Height: 20'

Grade Level Door(s): 4: 12 x 14

Truckwells or Docks: 0

Exterior Construction: N/A

Structural System: Conventional

Air-Conditioning: HVAC

Heating: Gas Radiant

Availability: Immediately

Power (Amps/Volts): 600 Amps, 240 Volts

Freestanding: Yes

Rail: No

Security: Yes

Interior: N/A

Lighting: N/A

Bay Sizes: N/A

Restrooms: 4

Cranes: No

Parking: Adequate

Year Built: 2000

Sprinklers: No

Signage: Yes

Exterior: N/A

Roof: N/A

Floors: 6"

Floor Drains: Yes

Acreage: 2.330

Land Dimensions: N/A

PRICING INFORMATION

Sale Price: \$1,185,000 (\$134.66/sqft)

Taxes: \$9,746.00 (2019)

Parcel #: 21-11-251-020

Deposit: N/A

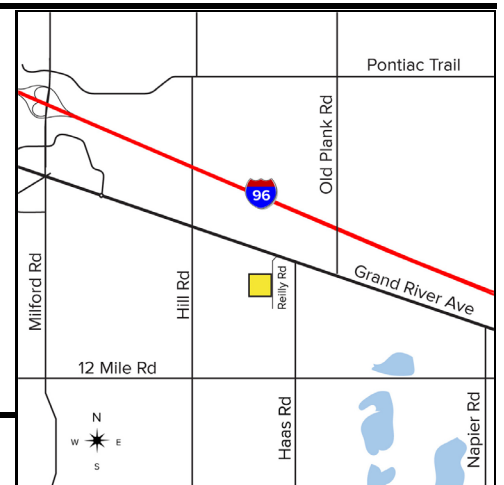
Options: N/A

TD: N/A

Assessor #: N/A

COMMENTS

Rare stand alone building with 2 acres of outside fenced storage. Beautiful offices, 2-story with elevator. Load supporting mezzanine.



Broker: SIGNATURE ASSOCIATES

Agent(s):

Jim Montgomery, (248) 359-0614, jmontgomery@signatureassociates.com

Christopher M. D'Angelo, (248) 948-0109, cdangelo@signatureassociates.com