

Kittridge Distribution Center

Bldg B

4931-4943 NW Front Ave
Portland, OR 97210

5,477 SF total

1,331 SF of office area

20' clear ceiling height

One (1) grade-level loading doors

End-cap unit with good visibility

Wet sprinkler system

277/480 volt, 3-phase
electrical power

Rare institutional grade business
park in the Guilds Lake submarket

Located with close proximity to
the close-in city core including all
major transportation routes

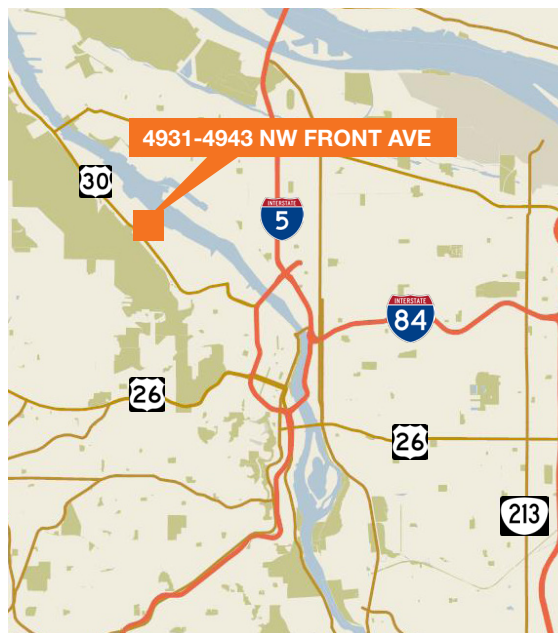
Ample passenger parking and
vehicle staging

Professionally operated and
managed

Call for lease rates



Location



Contact

Tony Reser, SIOR

Senior Vice President
503.221.2271
treser@kiddermathews.com

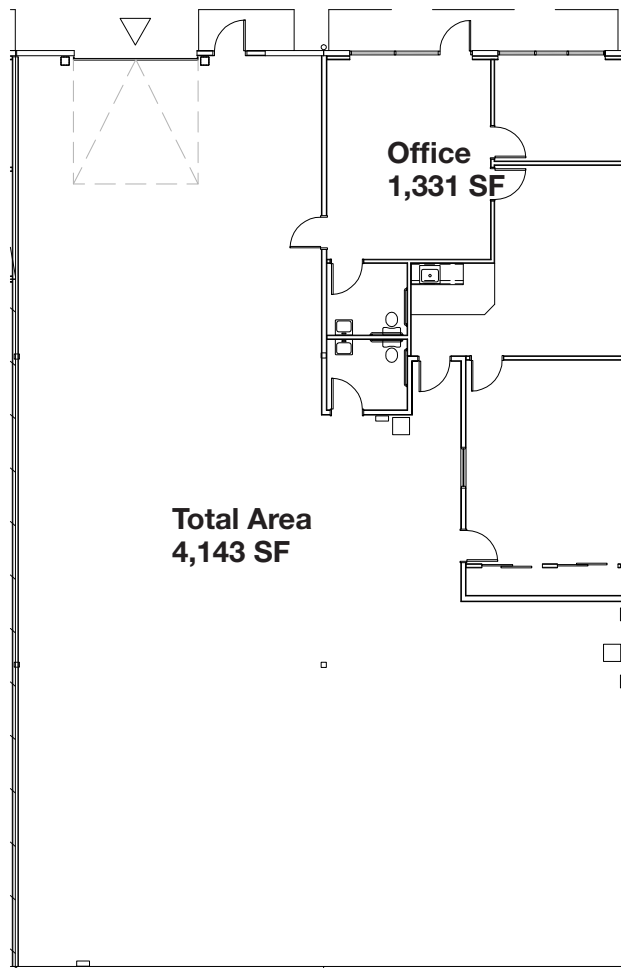
Tom Talbot, SIOR

Senior Vice President, Partner
503.221.2270
ttalbot@kiddermathews.com

Scott Murphy, SIOR

First Vice President, Partner
503.221.2287
smurphy@kiddermathews.com

Kittridge Distribution Center, Bldg B



△ : Drive-in Door
▲ : Dock-high Door

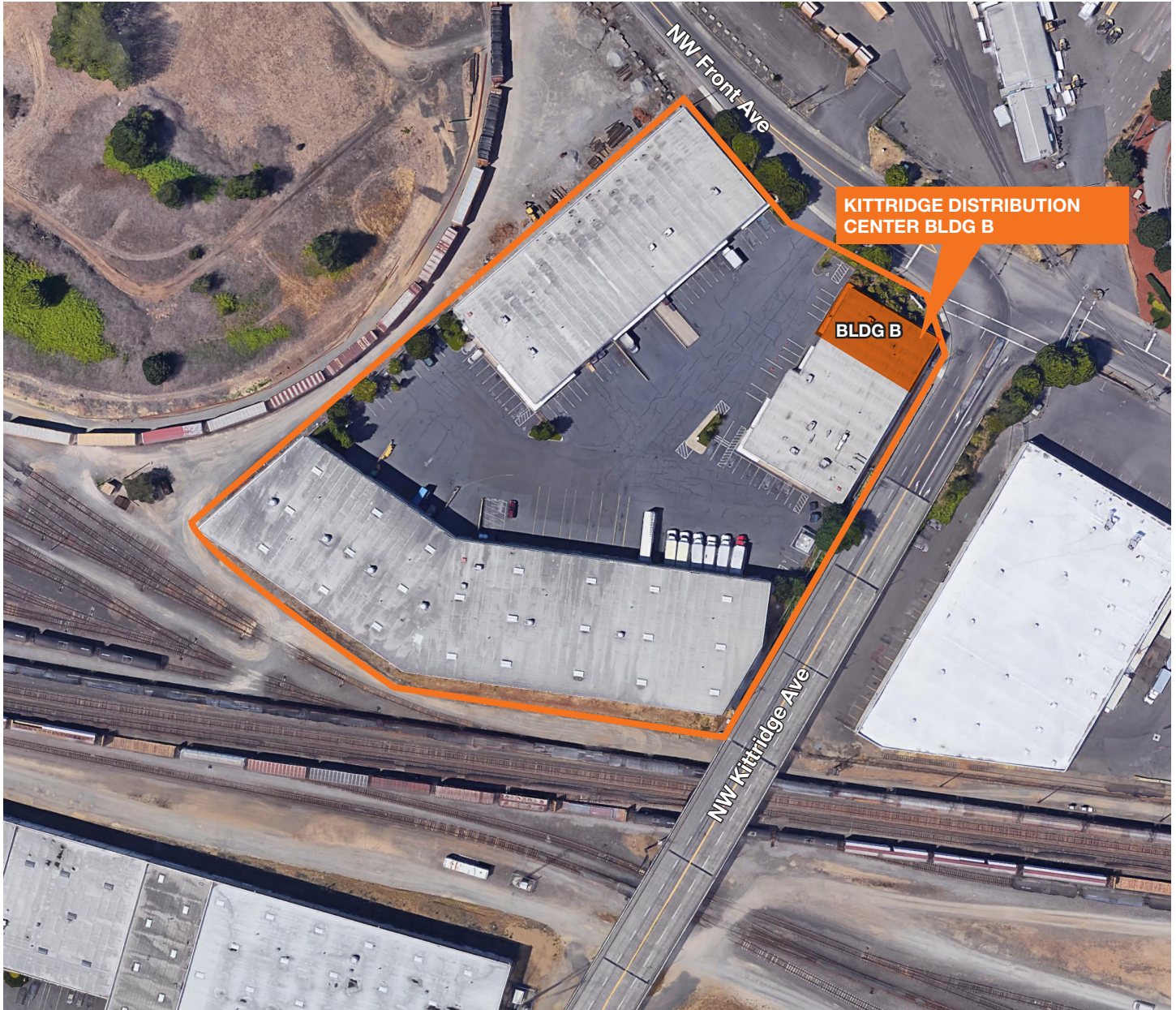
Contact

Tony Reser, SIOR
Senior Vice President
503.221.2271
treser@kiddermathews.com

Tom Talbot, SIOR
Senior Vice President, Partner
503.221.2270
ttalbot@kiddermathews.com

Scott Murphy, SIOR
First Vice President, Partner
503.221.2287
smurphy@kiddermathews.com

Kittridge Distribution Center, Bldg B



Contact

Tony Reser, SIOR
Senior Vice President
503.221.2271
treser@kiddermathews.com

Tom Talbot, SIOR
Senior Vice President
503.221.2270
ttalbot@kiddermathews.com

Scott Murphy, SIOR
First Vice President, Partner
503.221.2287
smurphy@kiddermathews.com