

FOR LEASE

Tenant Lounge Completed!

PARK 80 EAST

160 Pehle Avenue, Saddle Brook, NJ 07663

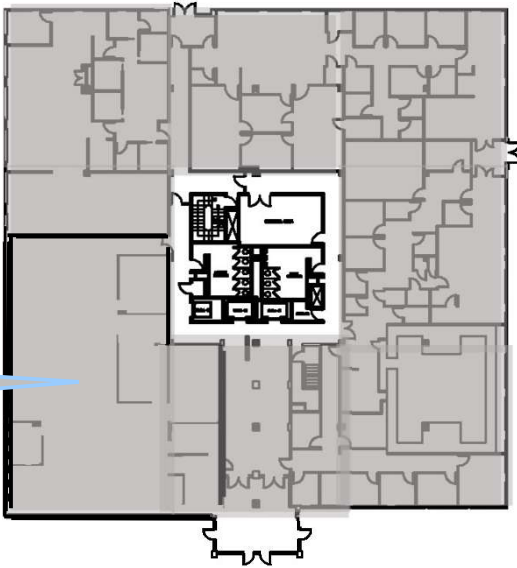


FLOOR PLANS



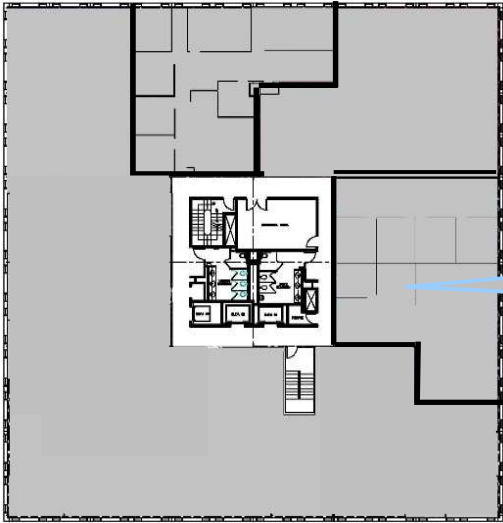
FIRST FLOOR

4,999
RSF



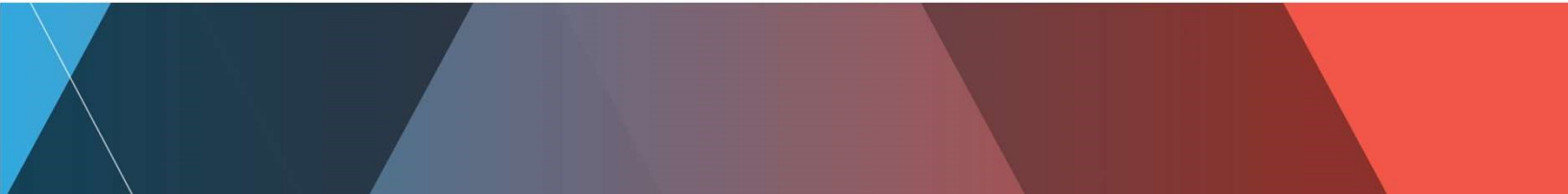
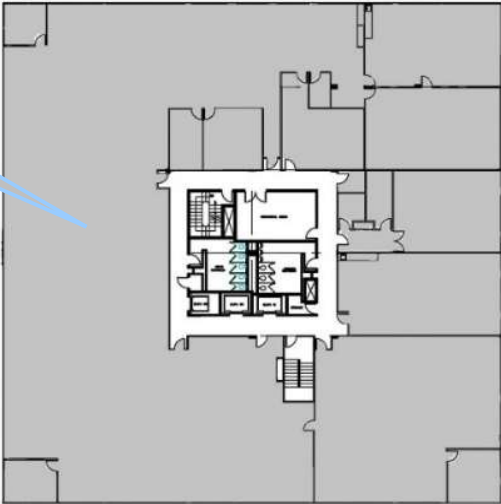
THIRD FLOOR

3,373 RSF
(Divisible)



21,341 RSF
(Entire Floor
Available/
Divisible)

ENTIRE
FOURTH FLOOR





PARK 80 EAST

160 Pehle Avenue, Saddle Brook, NJ 07663

Suites available from 2,708 RSF to 21,341 RSF

21,341 RSF CONTIGUOUS SPACE AVAILABLE

The very convenient Park 80 East building is located at the interchange of the Garden State Parkway Exit 159 and Interstate Route 80.

Most suites are currently built and ideal for tenants looking to move right into one of the most convenient locations in Bergen County.

- Entire 4th Floor available (21,341 RSF/divisible)
- Over 4.00/1,000 SF parking
- **Flexible Rental Rate: \$21.00 + T.E. per rentable sq. ft.**



New Tenant Lounge Added!

PARK 80 EAST

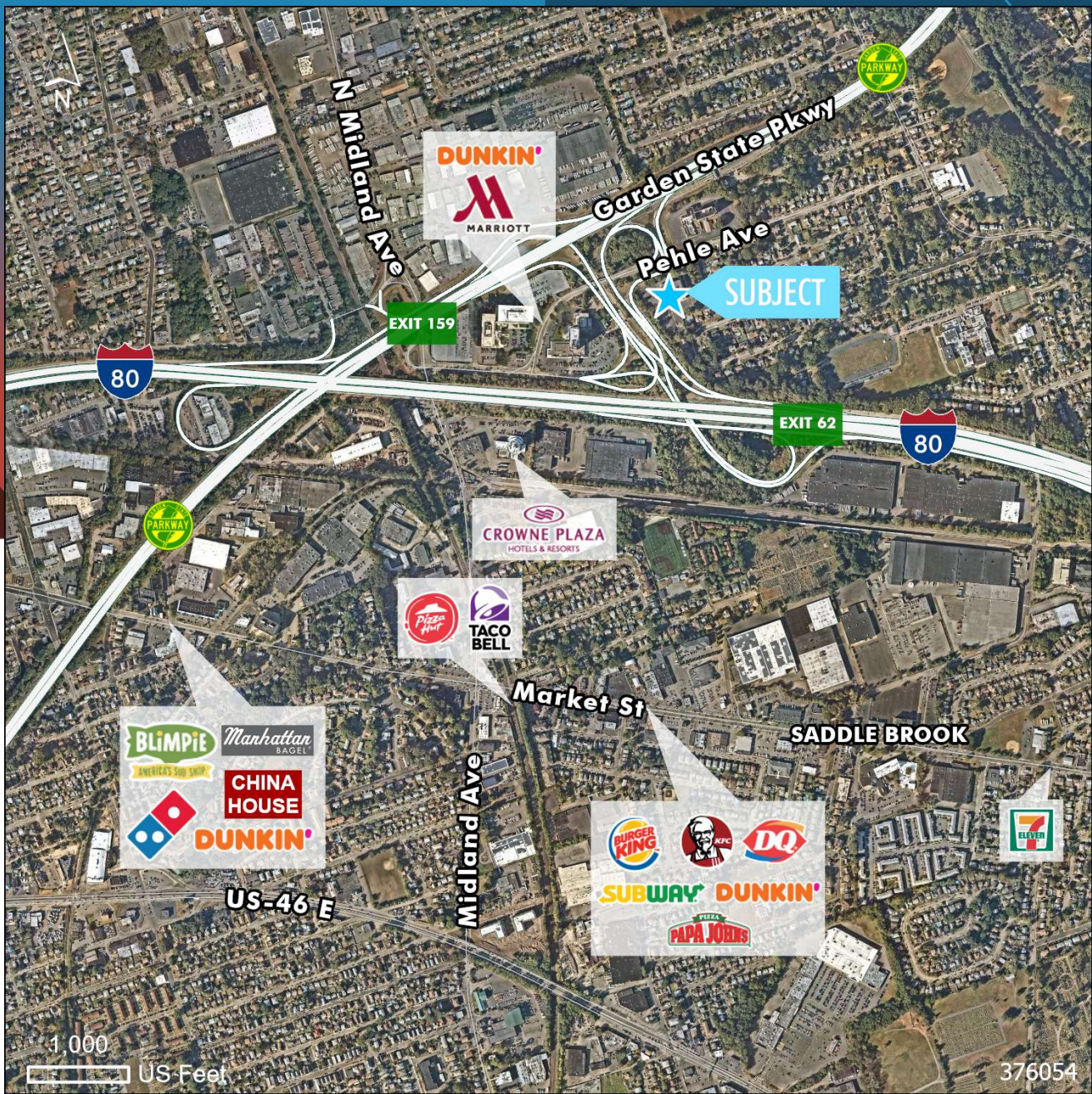
160 Pehle Avenue, Saddle Brook, NJ 07663



LOUNGE FEATURES:

- Pantry area with vending machines, microwave and coffee machine
- Seating capacity for 15 people
- Free WiFi
- Large Flat Screen TV





PARK 80 EAST

160 Pehle Avenue, Saddle Brook, NJ 07663

PLEASE CONTACT:

Daniel Casey

First Vice President
 +1 201 712 5808
 daniel.casey@cbre.com

Patricia Riedel

Senior Associate
 +1 732 509 2826
 patricia.riedel@cbre.com

© 2020 CBRE, Inc. All rights reserved. This information has been obtained from sources believed reliable, but has not been verified for accuracy or completeness. You should conduct a careful, independent investigation of the property and verify all information. Any reliance on this information is solely at your own risk. CBRE and the CBRE logo are service marks of CBRE, Inc. All other marks displayed on this document are the property of their respective owners, and the use of such logos does not imply any affiliation with or endorsement of CBRE. Photos herein are the property of their respective owners. Use of these images without the express written consent of the owner is prohibited.