

FOR SALE
Oak Grove Land

2728 Kings Highway | Colonial Beach, VA 22443



Property Features

- 2.2110 Acres for sale in Westmoreland County
- Next to new Dollar General and a commuter parking lot
- 350 LF frontage on Kings Hwy (Rte 3)

Specifications

Total Size	2.2110 Acres
Asking Price	\$250,000
Zoning	BG – Business General

For more information, contact:

BERKLEY MITCHELL
 Vice President
 540 322 4144
 berkley.mitchell@thalhimer.com

WILSON GREENLAW, CCIM
 Vice President
 540 322 4156
 wilson.greenlaw@thalhimer.com

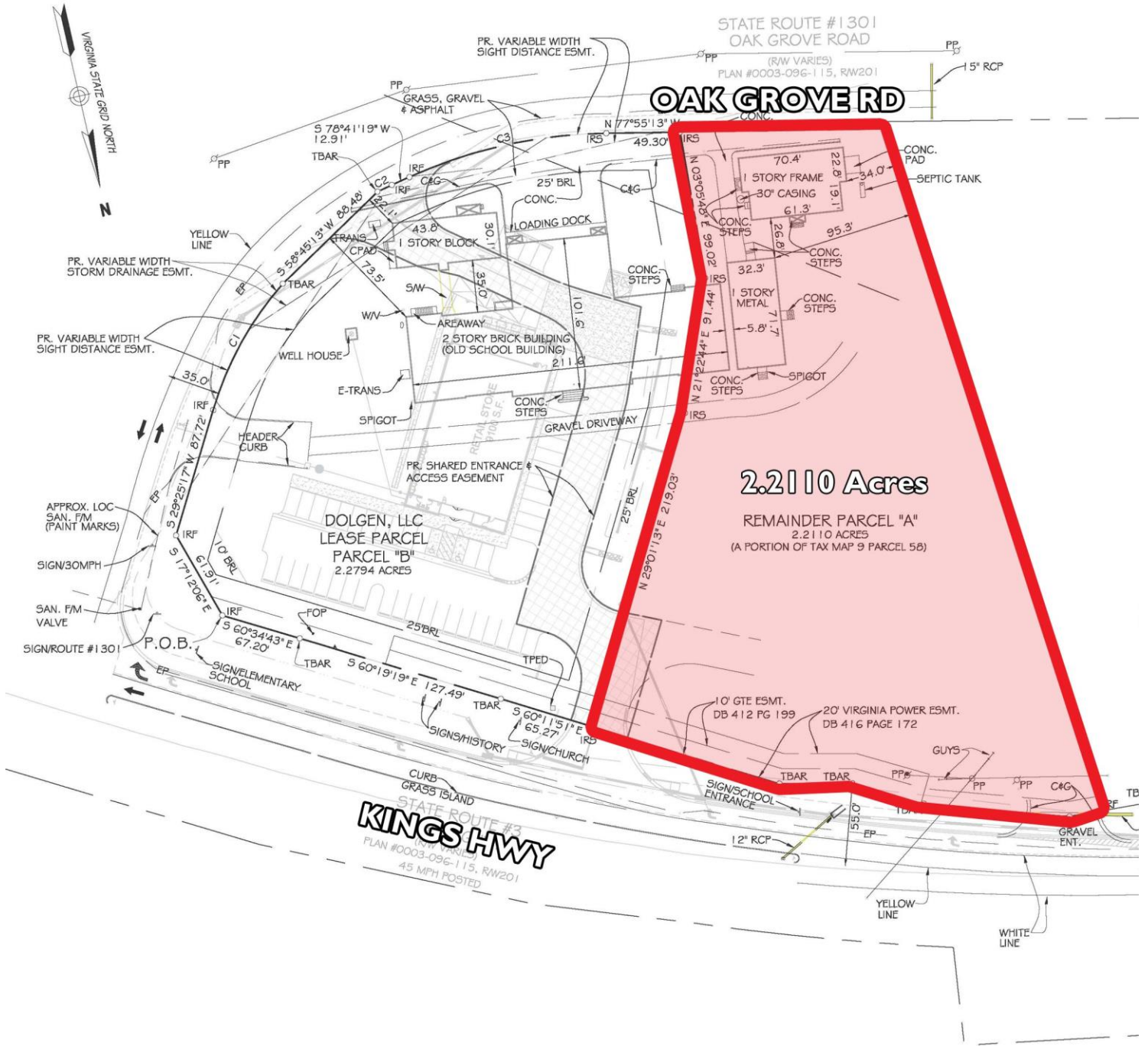
Eagle Village
 1125 Jefferson Davis Highway, Suite 350
 Fredericksburg, VA 22401
 www.thalhimer.com

Independently Owned and Operated / A Member of the Cushman & Wakefield Alliance

Cushman & Wakefield | Thalhimer © 2015. No warranty or representation, express or implied, is made to the accuracy or completeness of the information contained herein, and same is submitted subject to errors, omissions, change of price, rental or other conditions, withdrawal without notice, and to any special listing conditions imposed by the property owner(s). As applicable, we make no representation as to the condition of the property (or properties) in question.

FOR SALE
Oak Grove Land

2728 Kings Highway | Colonial Beach, VA 22443



For more information, contact:

BERKLEY MITCHELL
 Vice President
 540 322 4144
 berkley.mitchell@thalhimer.com

WILSON GREENLAW, CCIM
 Vice President
 540 322 4156
 wilson.greenlaw@thalhimer.com

Eagle Village
 1125 Jefferson Davis Highway, Suite 350
 Fredericksburg, VA 22401
 www.thalhimer.com