

8-12 FAIRVIEW PLACE

EAST FLATBUSH, BROOKLYN



RETAIL SPACE
FOR LEASE

EAST FLATBUSH BROOKLYN

8-12 FAIRVIEW PLACE

SPACE HIGHLIGHTS

LOCATION

Between Martense St
and Church Avenue

SPACE

4,289 SF

CEILING HEIGHT

10 FT

FRONTAGE

20 FT

DIMENSIONS

Variable

ZONING

R6 / C1-3

OCCUPANCY

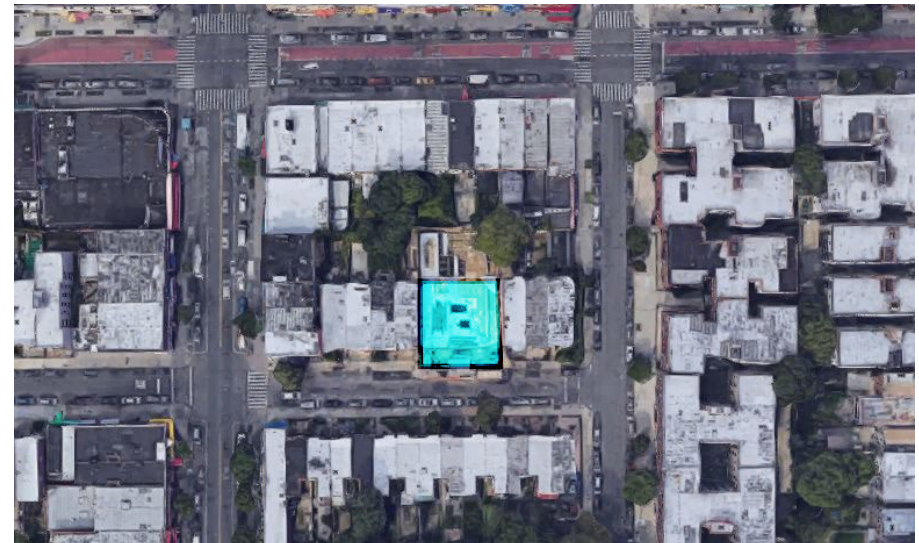
Immediate

ASKING RENT

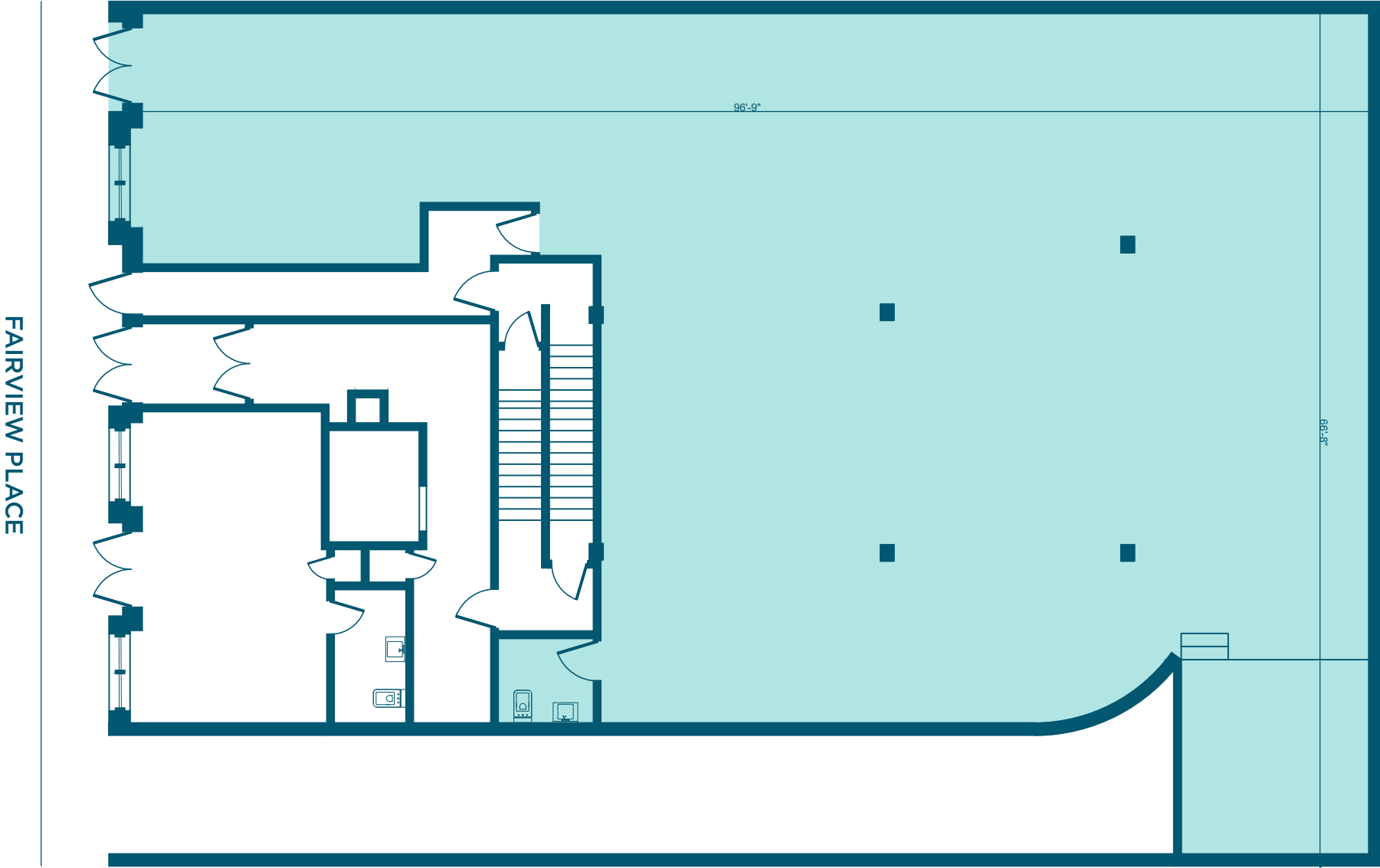
Upon Request

HIGHLIGHTS

- One Block from 2/3 Church Ave subway stop
- Large space in the neighborhood, hard to come by
- High quality new construction
- HVAC
- Option for additional windows in back
- Ideal for gym or office use



FLOORPLANS & DETAILS



EAST FLATBUSH BROOKLYN

8-12 FAIRVIEW PLACE

SPACE DEVELOPMENT



EAST FLATBUSH BROOKLYN

8-12 FAIRVIEW PLACE

SPACE DEVELOPMENT



EAST FLATBUSH BROOKLYN

8-12 FAIRVIEW PLACE

NEIGHBORHOOD DEMOGRAPHICS



202,284

POPULATION
WITHIN 1-MILE
RADIUS



38 Years

AVERAGE
POPULATION
AGE



9.65%

POPULATION
GROWTH
SINCE 2010



\$66,036

AVERAGE HHI
WITHIN 1-MILE
RADIUS



4,628

TOTAL BUSINESSES
WITHIN 1-MILE
RADIUS



\$1.4 bn

ANNUAL SPENDING
WITHIN 1-MILE
RADIUS

EAST FLATBUSH BROOKLYN

8-12 FAIRVIEW PLACE

NEIGHBORHOOD & TRANSPORTATION

NEIGHBORHOOD TENANTS

- Wholesome 360
- CTown Supermarkets
- Good Health Pharmacy
- Michael's Pharmacy
- Jus Juice
- Nostrand Health Foods
- Exquisite Express
- Donut Shop
- Four Seasons Bakery
- Nio's Roti Shop
- Leo Buffet
- Rite Aid
- Burger King
- Chase Bank
- Kam Man
- Donut Shop
- Subway
- Tastee Patte
- Walgreense
- Dunkin'
- News Feed Cafe, NYC.

TRANSPORTATION

- 2 Min Walk at Church Avenue (0.1 mi)
- 9 Min Walk at Winthrop Street (0.4 mi)
- 10 Min Walk at Beverly Road (0.5 mi)
- 17 Min Walk at Church Avenue (0.8 mi)



EAST FLATBUSH BROOKLYN

8-12 FAIRVIEW PLACE

CONTACT



ROSS ADAMS
609.903.1413
radams@exrny.com

DYLAN HEISER
216.973.7117
dylan@exrny.com

**COMMERCIAL SPACE
FOR LEASE**
NATE MALLON
860.416.7288
NMALLON@EXRNY.COM
EXR
EXRNY.COM

