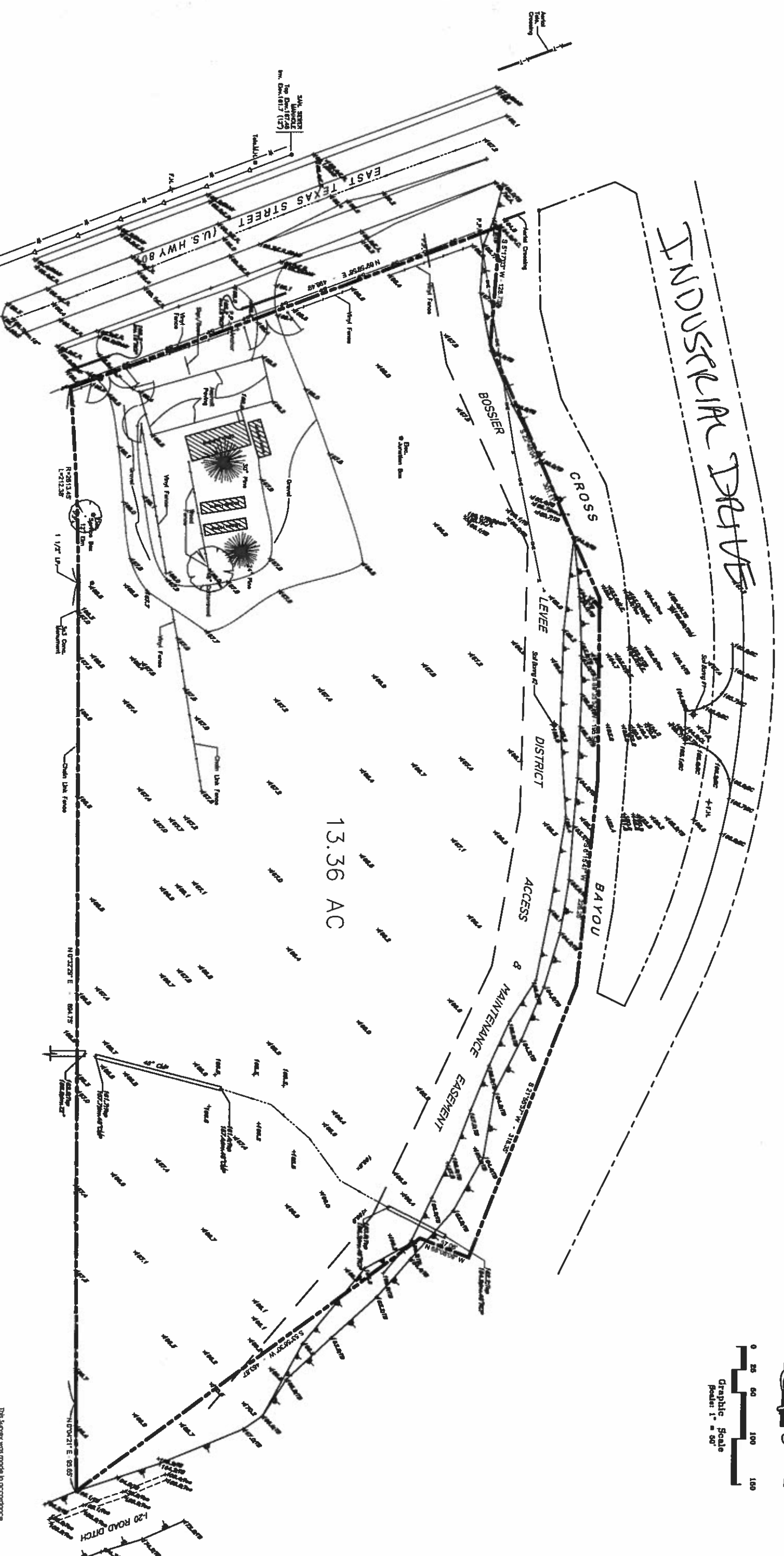
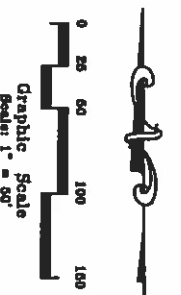


INDUSRIAL DRIVE



13.36 AC

S&L SURVEY
Top of Division 4
Inv. Elev. 112 (17)

S&L SURVEY
Top of Division 4
Inv. Elev. 112 (17)

S&L SURVEY
Top of Division 4
Inv. Elev. 112 (17)

PROPERTY SURVEY
FOR
TOTAL PROPERTIES, INC.
13.36 ACRES, MORE OR LESS, LOCATED IN
SECTION 23, TOWNSHIP 18 NORTH, RANGE
13 WEST, BOSSIER PARISH, LOUISIANA.
MAY 22, 2014
SCALE: 1" = 50'
NTS

PRELIMINARY

The survey was made in accordance
with the provisions of the Louisiana
For Property Boundary Survey, Part
9 Civil Code, Survey.

Smith Engineering Co., Inc.
CONSULTING ENGINEERS
519 Iberdrola Boulevard
Bossier City, Louisiana 70111