



FLOOR	SQ. FT.	ASKING RENT	POSSESSION	COMMENTS
PART 4 TH	8,996	Upon request	Immediate	• Existing installation.
PART 4 TH	12,764	Upon request	LEASED	
PART 5 TH	4,452	Upon request	Immediate	• Existing installation.
PART 11 TH	4,207	Upon request	LEASE PENDING	
PART 11 TH	8,231	Upon request	Immediate	• Existing installation.
ENTIRE 15 TH	21,760	Upon request	Immediate	• Existing installation. • Can be subdivided.
PART 23 RD	11,203	Upon request	Immediate	• Raw space. • Landlord will provide a new building installation.
PART 24 TH	1,294	Upon request	Immediate	• Existing installation.
PART 24 TH	3,274	Upon request	April 1, 2021	• Existing installation.
PART 31 ST	12,371	Upon request	December 2020	• Raw space • Landlord will provide a new building installation. • Excellent river views

PROPERTY FEATURES

- Outstanding river views
- I.M. PEI designed – architectural award winning building
- Building qualifies for the benefits under the Lower Manhattan Revitalization Program (LMRP)
- Energy Star rated
- Recently completed 65 seat Tenant conference center



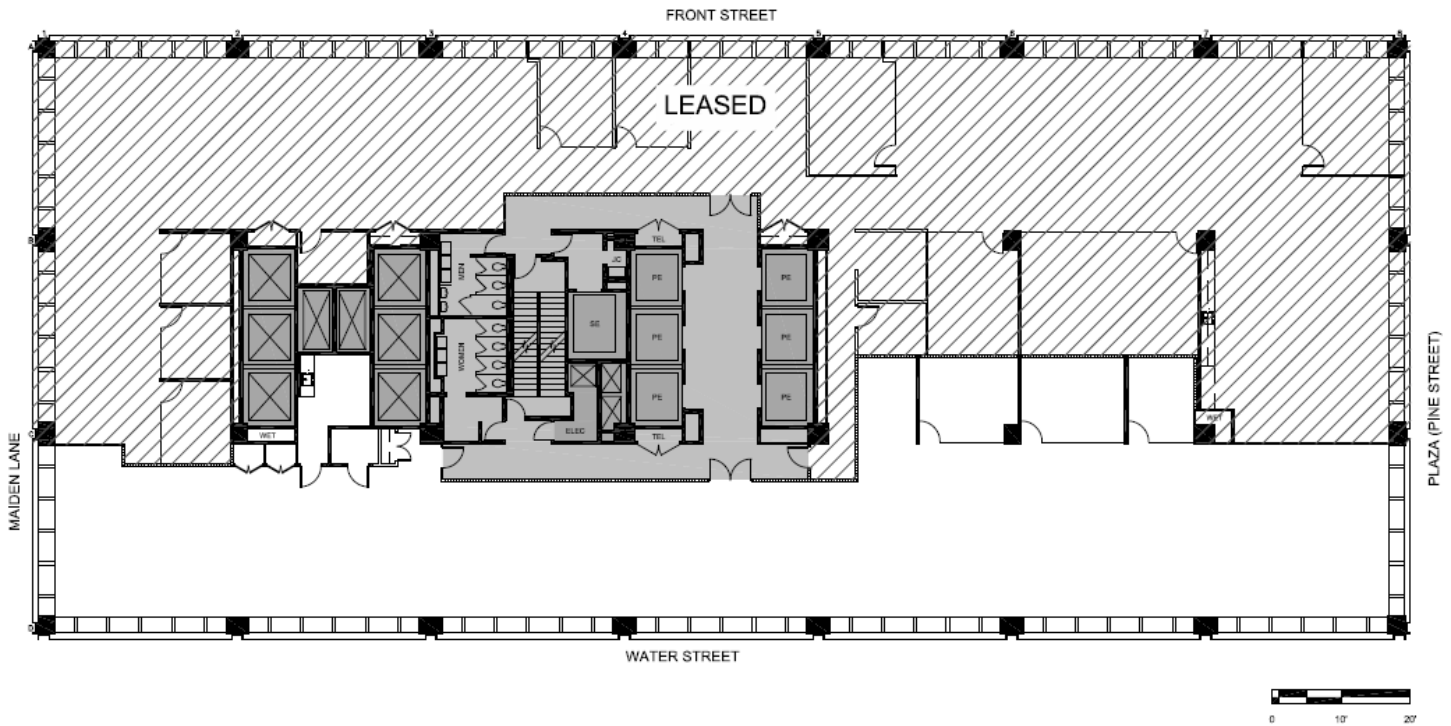
For more information, contact:

Frank A. Cento
 212.709.0745
Frank.Cento@cushwake.com

Robert A. Constable
 212.709.0770
Robert.Constable@cushwake.com

Edward "Mac" Mombello
 212.709.0743
Edward.Mombello@cushwake.com

One World Trade Center
 45th Floor, Suite B
 New York, NY 10007
cushmanwakefield.com



Partial 4th Floor – 8,996 RSF

For more information, contact:

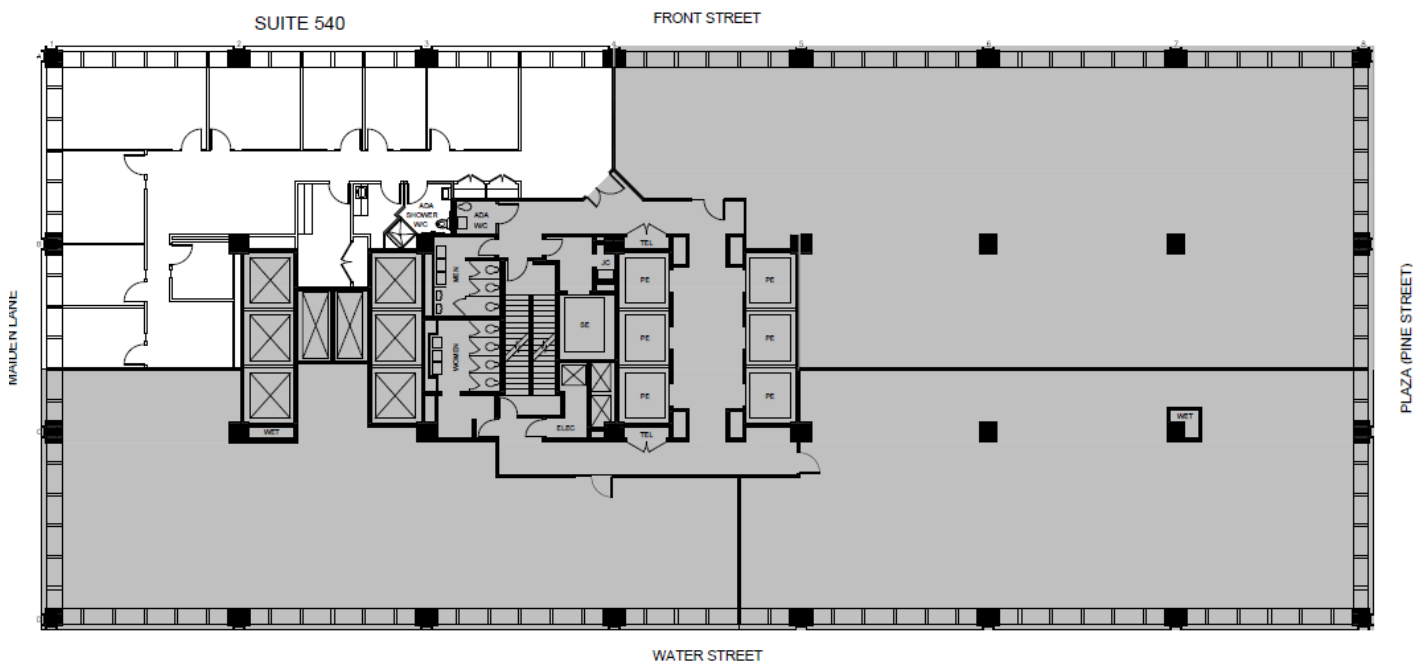
Frank A. Cento
212.709.0745
Frank.Cento@cushwake.com

Robert A. Constable
212.709.0770
Robert.Constable@cushwake.com

Edward "Mac" Mombello
212.709.0743
Edward.Mombello@cushwake.com

One World Trade Center
45th Floor, Suite B
New York, NY 10007
cushmanwakefield.com

January 2021



Partial 5th Floor – 4,452 RSF

For more information, contact:

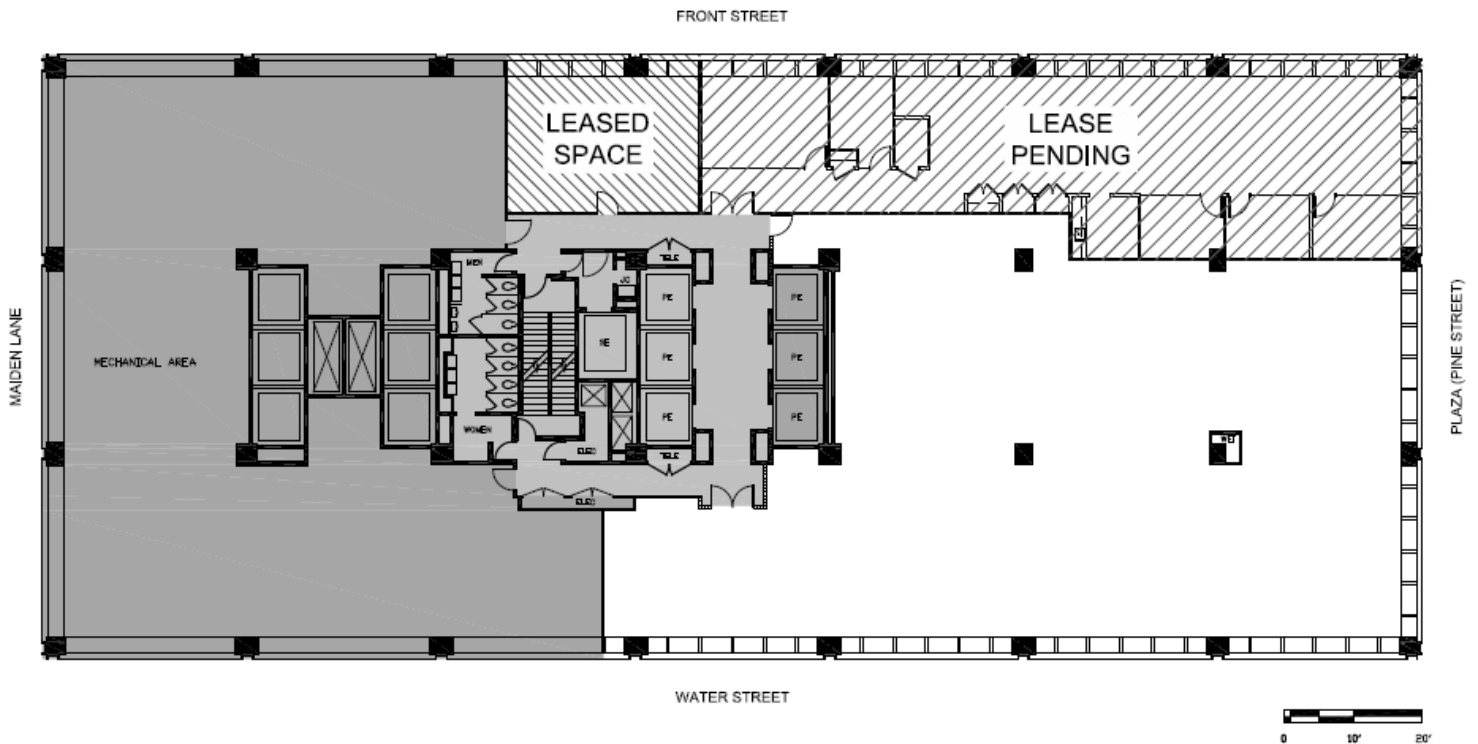
Frank A. Cento
212.709.0745
Frank.Cento@cushwake.com

Robert A. Constable
212.709.0770
Robert.Constable@cushwake.com

Edward “Mac” Mombello
212.709.0743
Edward.Mombello@cushwake.com

One World Trade Center
45th Floor, Suite B
New York, NY 10007
cushmanwakefield.com

January 2021



Partial 11th Floor – 8,231 RSF

For more information, contact:

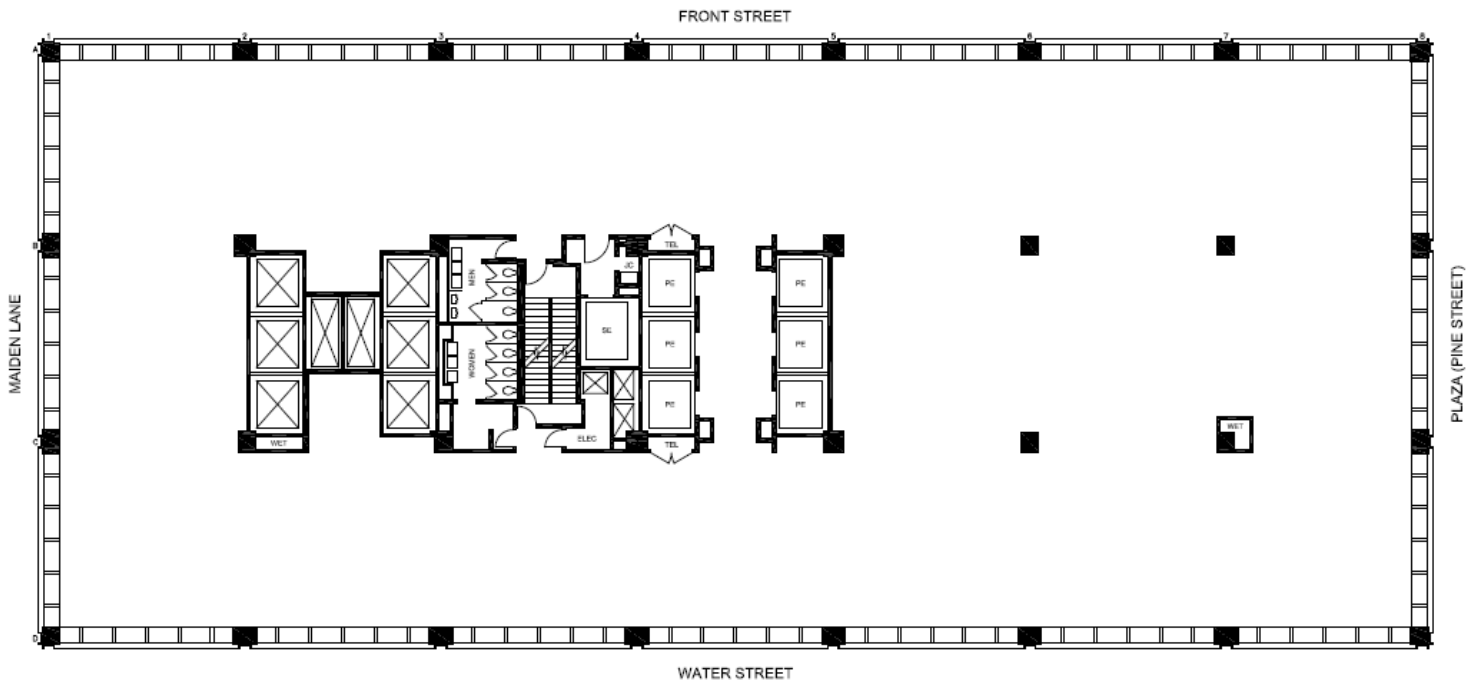
Frank A. Cento
212.709.0745
Frank.Cento@cushwake.com

Robert A. Constable
212.709.0770
Robert.Constable@cushwake.com

Edward "Mac" Mombello
212.709.0743
Edward.Mombello@cushwake.com

One World Trade Center
45th Floor, Suite B
New York, NY 10007
cushmanwakefield.com

January 2021



Entire 15th Floor – 21,760 RSF

For more information, contact:

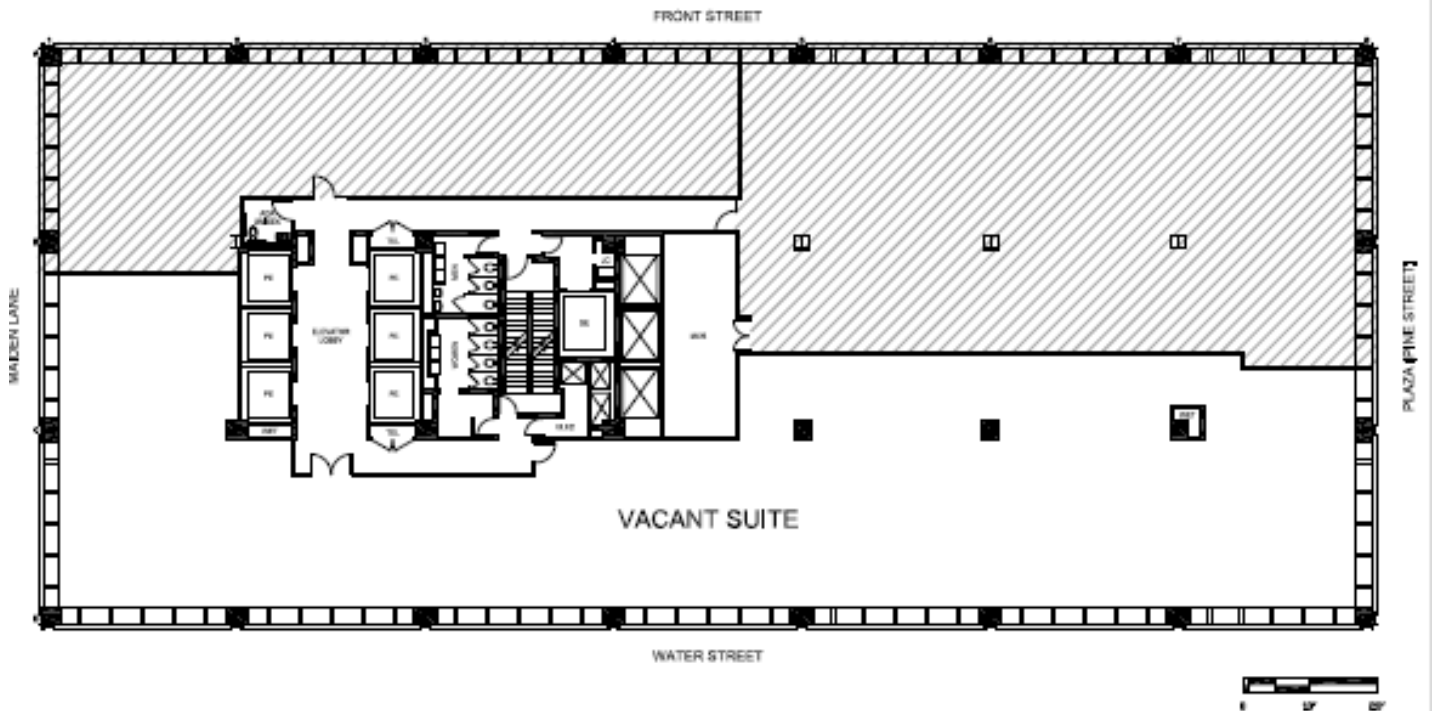
Frank A. Cento
212.709.0745
Frank.Cento@cushwake.com

Robert A. Constable
212.709.0770
Robert.Constable@cushwake.com

Edward "Mac" Mombello
212.709.0743
Edward.Mombello@cushwake.com

One World Trade Center
45th Floor, Suite B
New York, NY 10007
cushmanwakefield.com

January 2021



Part 23rd Floor – 11,203 RSF

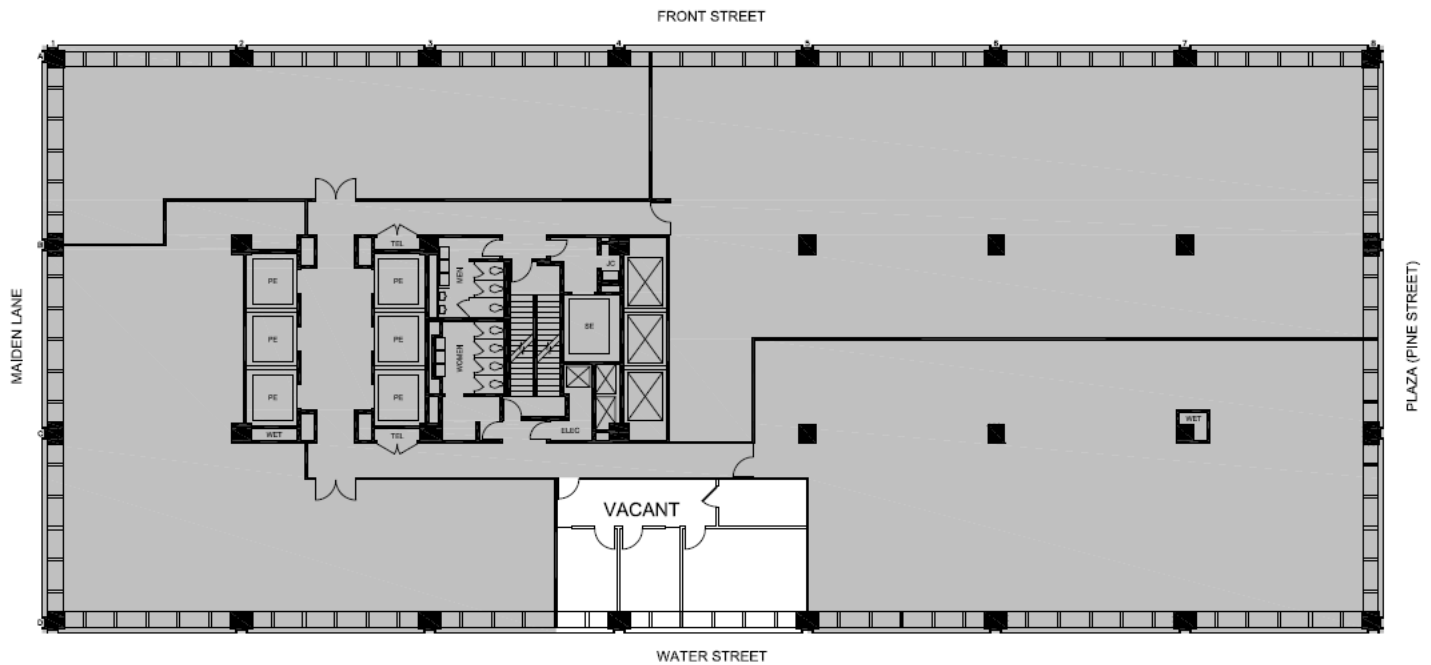
For more information, contact:

Frank A. Cento
212.709.0745
Frank.Cento@cushwake.com

Robert A. Constable
212.709.0770
Robert.Constable@cushwake.com

Edward "Mac" Mombello
212.709.0743
Edward.Mombello@cushwake.com

One World Trade Center
45th Floor, Suite B
New York, NY 10007
cushmanwakefield.com



Part 24th Floor – 1,294 RSF

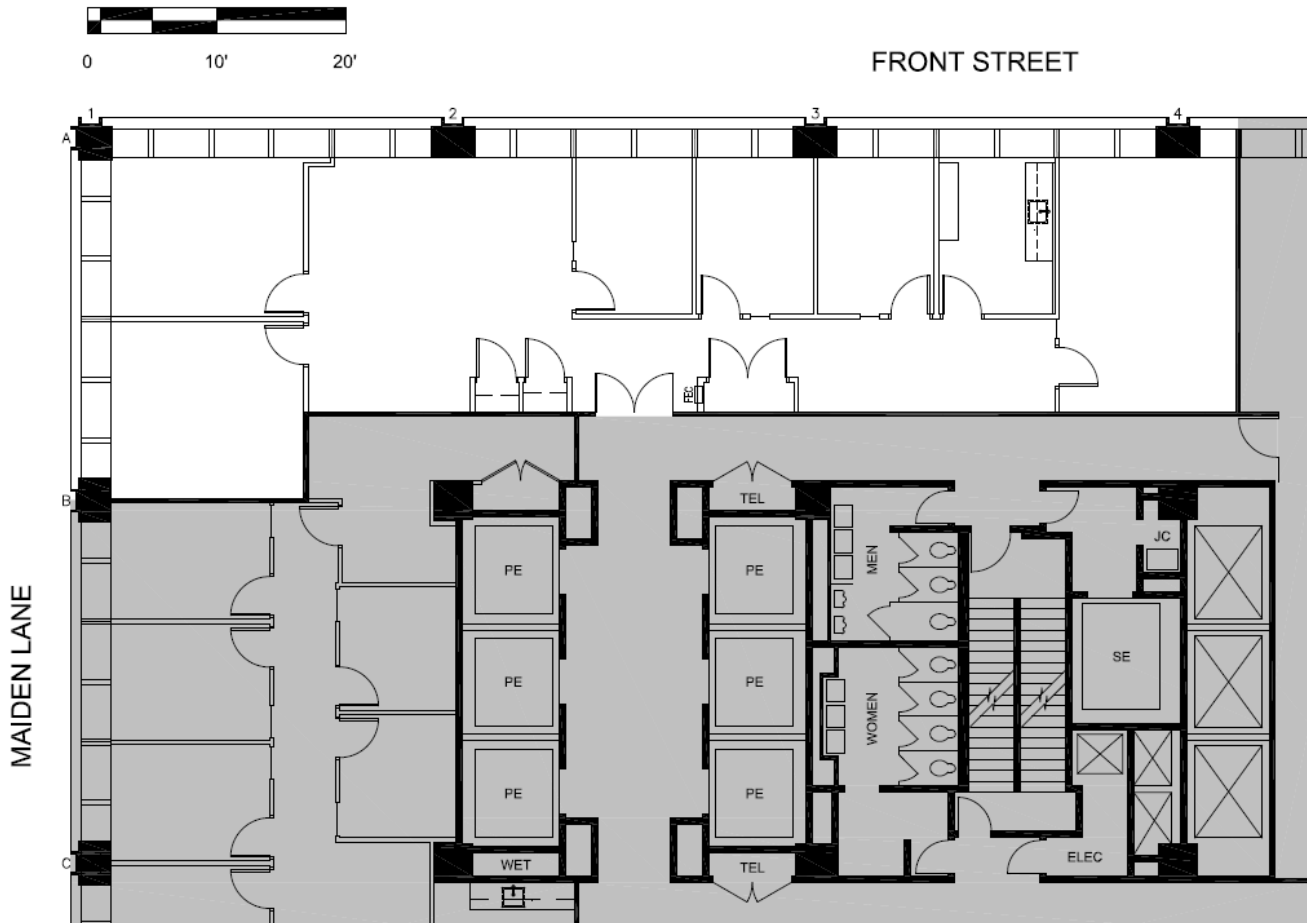
For more information, contact:

Frank A. Cento
212.709.0745
Frank.Cento@cushwake.com

Robert A. Constable
212.709.0770
Robert.Constable@cushwake.com

Edward "Mac" Mombello
212.709.0743
Edward.Mombello@cushwake.com

One World Trade Center
45th Floor, Suite B
New York, NY 10007
cushmanwakefield.com



Part 24th Floor – 3,274 RSF

For more information, contact:

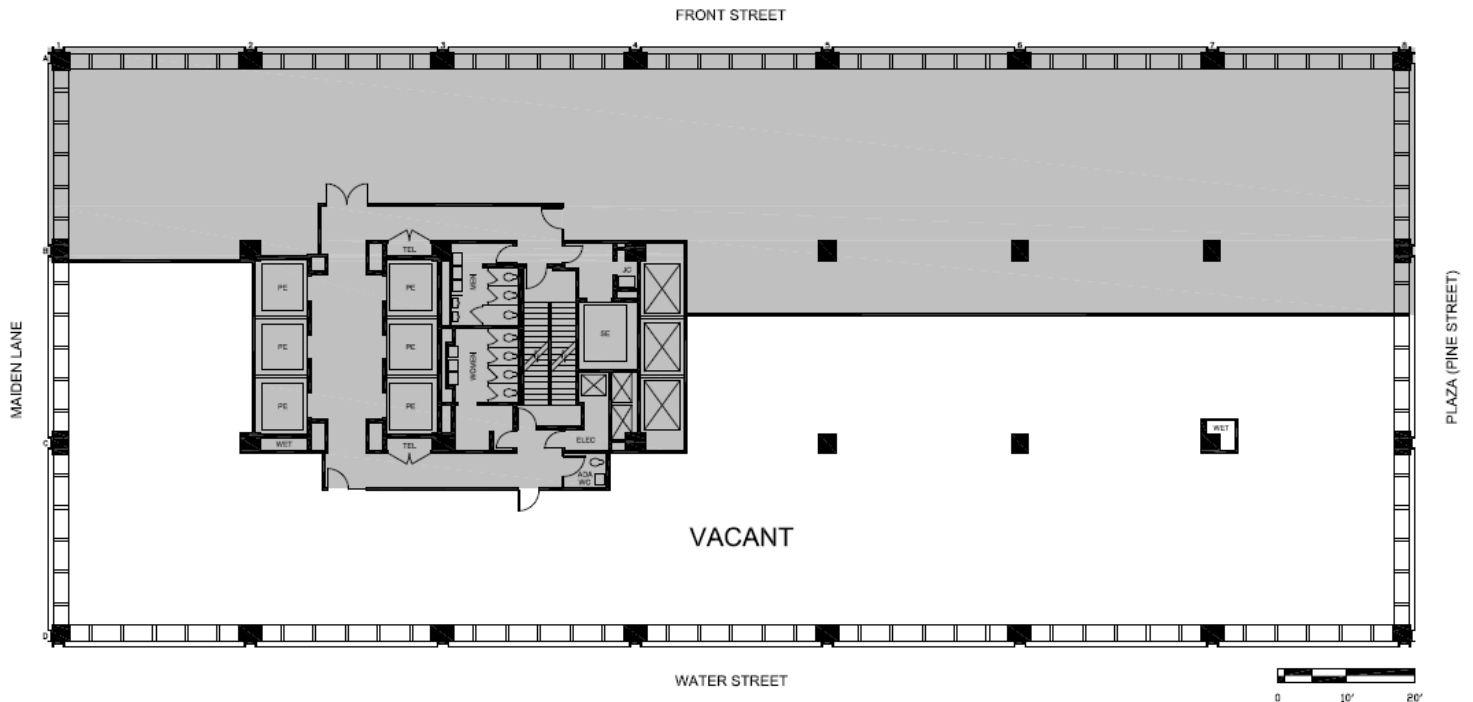
Frank A. Cento
 212.709.0745
Frank.Cento@cushwake.com

Robert A. Constable
 212.709.0770
Robert.Constable@cushwake.com

Edward "Mac" Mombello
 212.709.0743
Edward.Mombello@cushwake.com

One World Trade Center
 45th Floor, Suite B
 New York, NY 10007
cushmanwakefield.com

January 2021



Partial 31st Floor– 12,371 RSF

For more information, contact:

Frank A. Cento
212.709.0745
Frank.Cento@cushwake.com

Robert A. Constable
212.709.0770
Robert.Constable@cushwake.com

Edward “Mac” Mombello
212.709.0743
Edward.Mombello@cushwake.com

One World Trade Center
45th Floor, Suite B
New York, NY 10007
cushmanwakefield.com