

SWC MACARTHUR BLVD & I-635

ENDCAP FOR LEASE OR SALE

IRVING, TEXAS

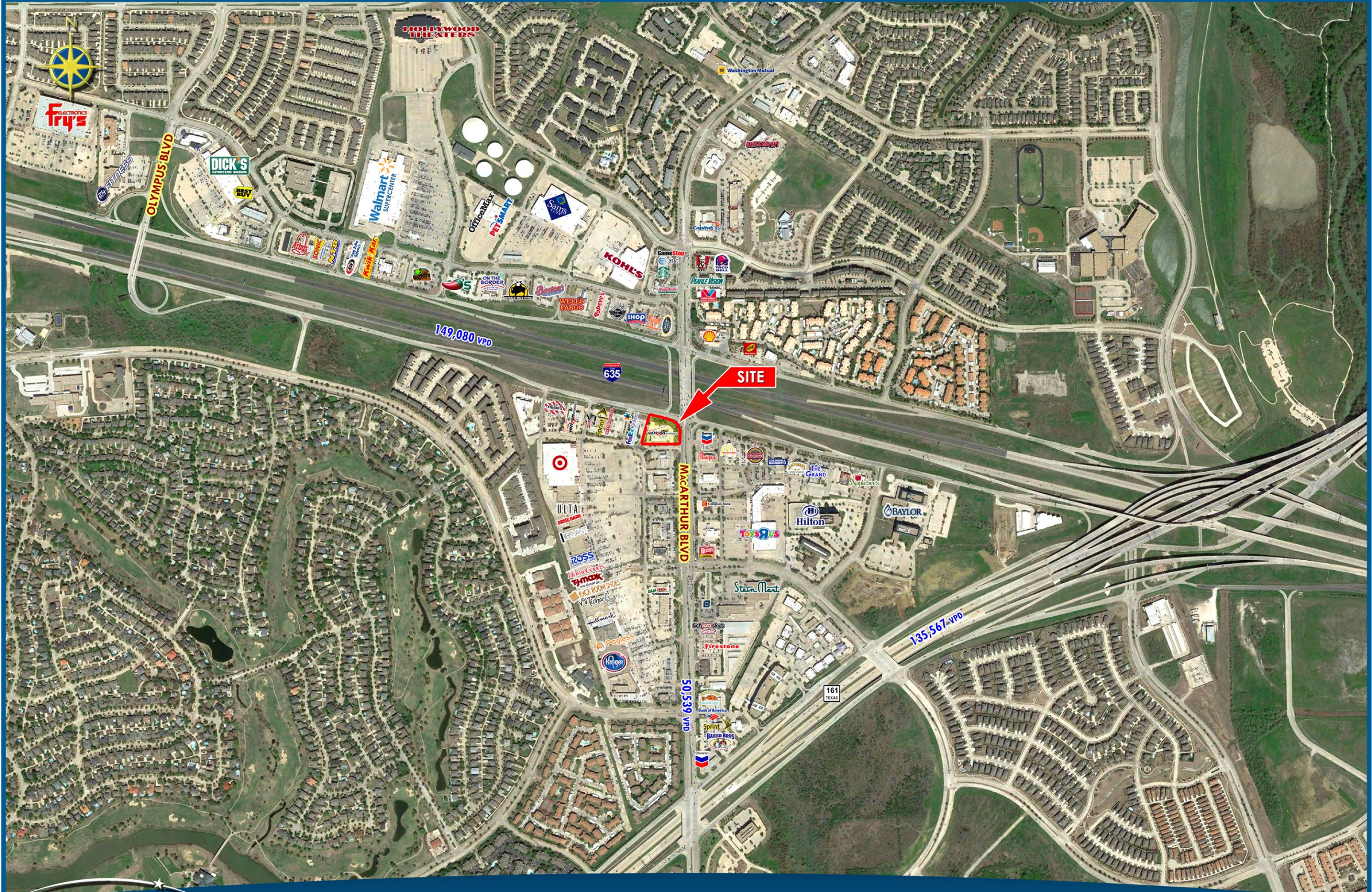
CHARLOTTE COOPER

CLAY MOTE

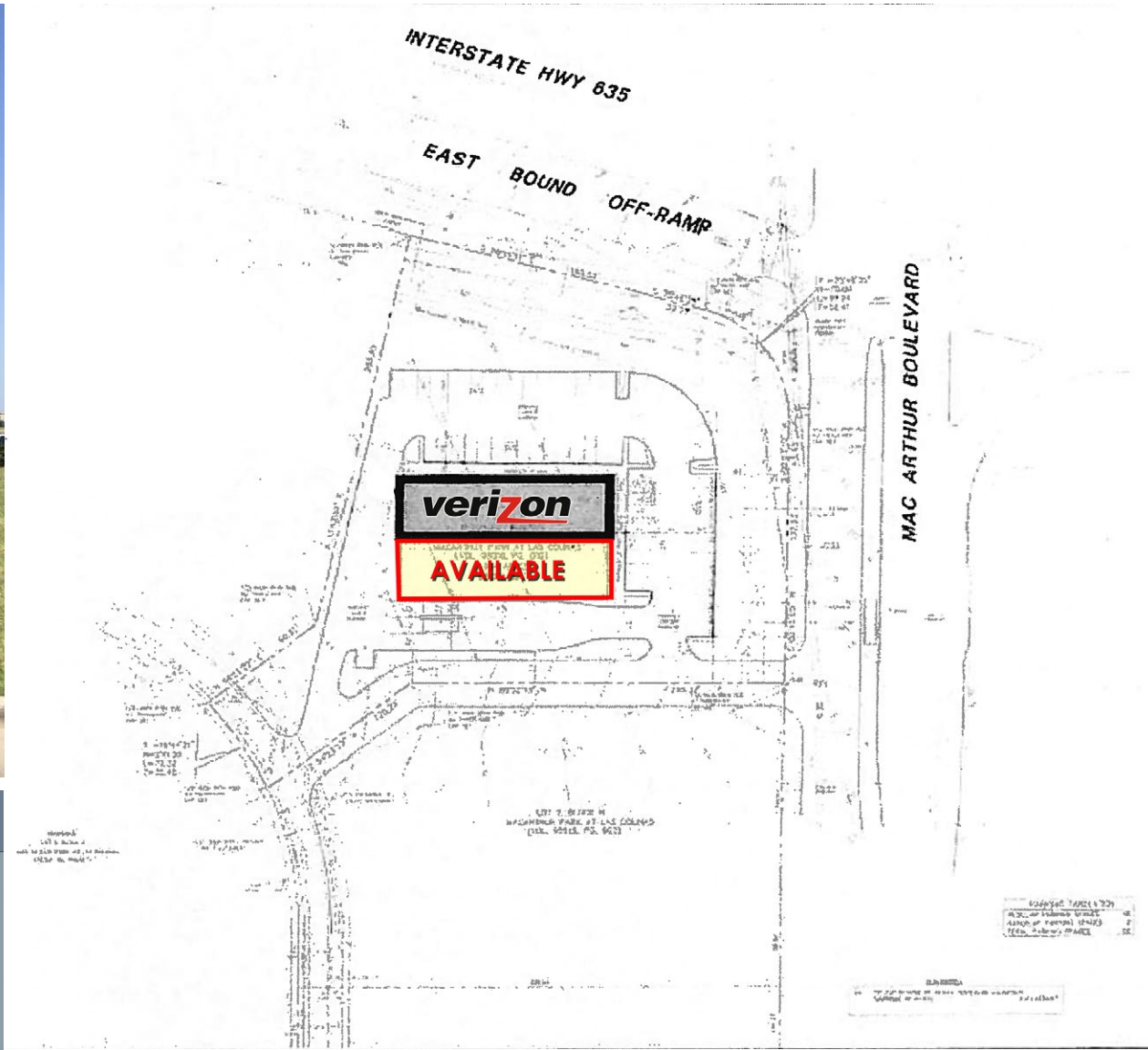
AVAILABLE
5,408 SF



LEASING | TENANT REPRESENTATION | LAND | INVESTMENT SALES | PROPERTY MANAGEMENT



SWC MACARTHUR BLVD & I-635



HIGHLIGHTS

- SIZE 5,408 SF
- High traffic, dominant retail intersection
- Drive-thru available

DEMOGRAPHICS	1 MILE	3 MILE	5 MILE
2015 EST POPULATION	16,537	61,233	182,474
2015 EST DAYTIME POPULATION	8,952	69,947	213,950
2015 EST AVG HH INCOME	\$108,514	\$98,474	\$88,779

TRAFFIC COUNTS	
MACARTHUR BLVD	50,539 VPD
I-635	149,080 VPD

