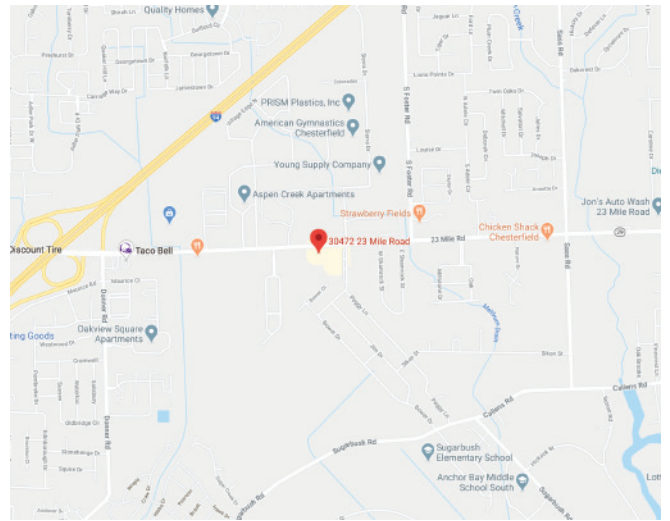




PROFESSIONAL OFFICE BUILDING 30472-30493 23 MILE, CHESTERFIELD



Property Type:	General Office/Medical
Total Sqare Footage:	11,200
Minimum Sq. Ft. Available:	1,700
Maximum Sq. Ft. Available:	6,400
Lease Rate:	\$8.00
Lot Size:	1.87 Acres
Year Built:	1977
Zoning:	C-1
Parking Spaces:	75+
Cross Streets:	Southside of 23 Mile East of I94



PROPERTY OVERVIEW

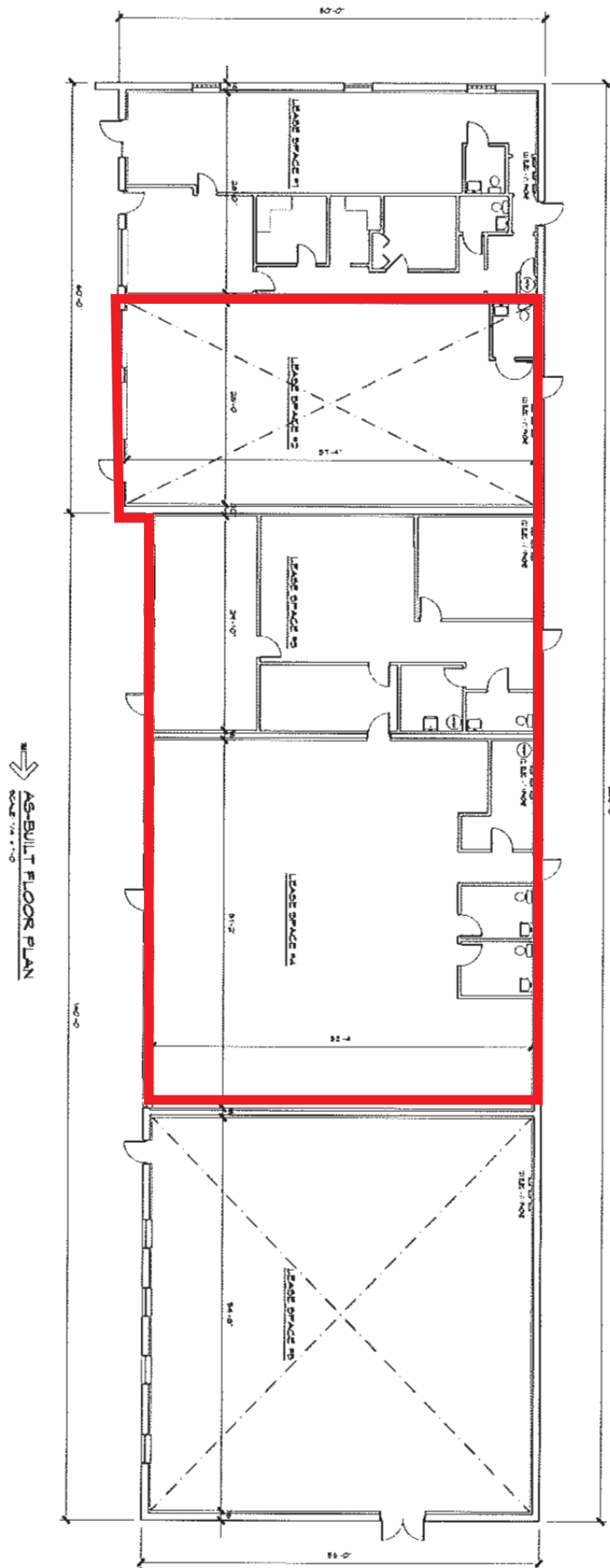
Gray shell space. Perfect for storage or may be built out offering up to 11,200 square feet of contiguous space. Recently upgraded landscaping, exterior and parking lot. Ample parking. Minutes to I-94

PROPERTY CONTACTS:

KEN MINNE | O: 586.254.0900 | C: 586.291.5525 | ken@pilotpg.com

44400 VAN DYKE, SUITE 101 | STERLING HEIGHTS, MI | 48314

23 MILE ROAD OFFICE BUILDING FLOOR PLAN



ADDITIONAL PICTURES



PILOT
PROPERTY GROUP

ADDITIONAL PICTURES

