



1503 Glen Avenue

Moorestown, New Jersey 08057

Property Description

- Land for 18,170± SF office/warehouse
- Block 200A, Lot 3
- Part of two building Master Deed Development on 2.83± acres
- Divisible to six (6) units
- Monument signage
- Zoned Specially Restricted Industrial (SRI)
- All utilities available including public water and sewer

Sale Price **\$500,000**

Moorestown - "Everything you need"

Located near abundant skilled labor pool and top residential areas.

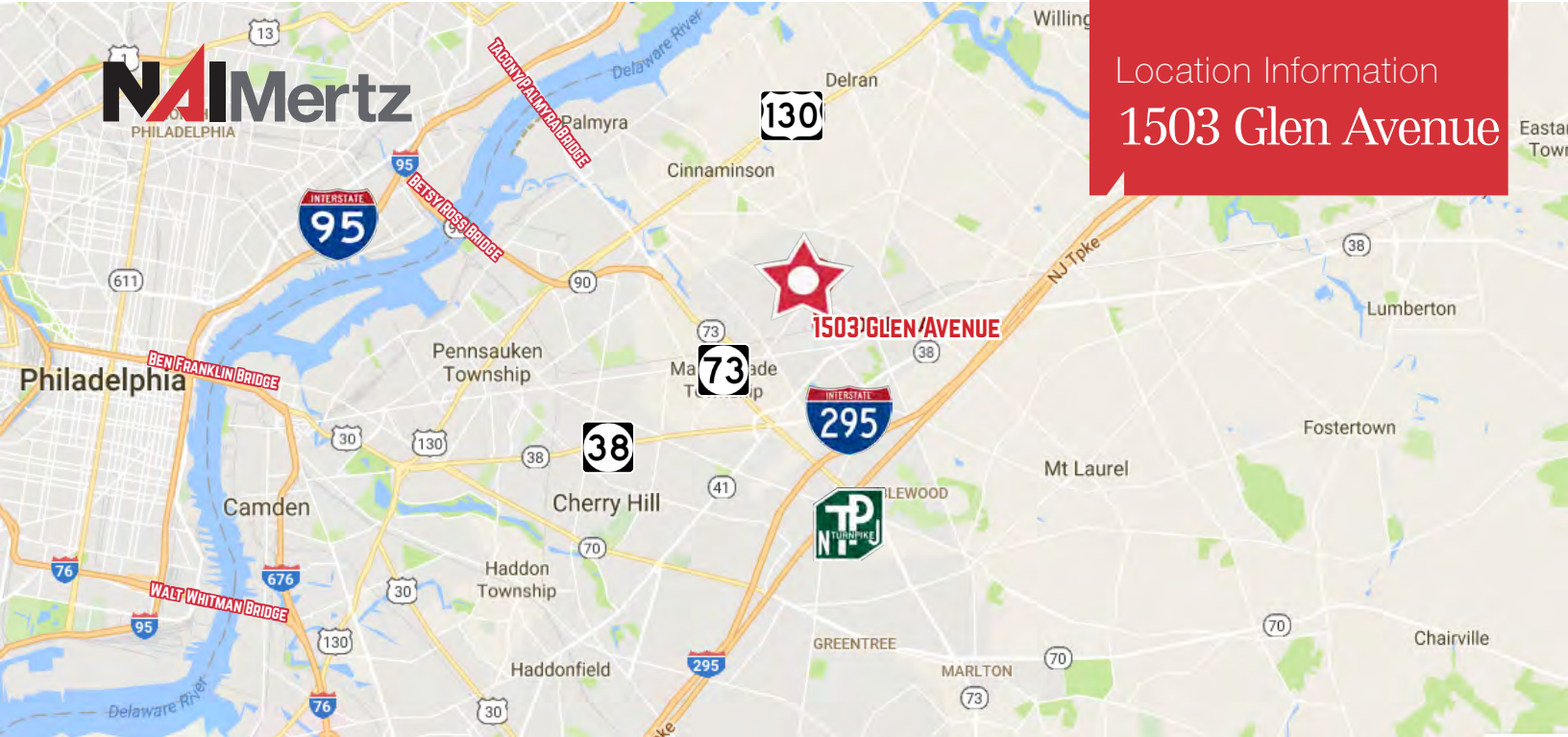
For more information:

Rebecca Ting, SIOR

+1 856 234 9600 • rebecca.ting@naimertz.com

Julie Kronfeld, SIOR

+1 856 802 6516 • julie.kronfeld@naimertz.com



Location Information

- Located on the corner of Glen Ave and Foster Road
- Easy access to Routes 130, 38 & 73
- 4 miles to I-295 & Exit 4 of the NJ Turnpike
- 6 miles to Betsy Ross & Tacony Palmyra Bridges serving Philadelphia and I-95

Driving Distances to:

New Jersey Turnpike (Exit 4)	4.1 miles
Interstate 295 (Exit 36)	4.1 miles
Interstate 95 via Betsy Ross Bridge	8 miles
Center City Philadelphia	12.7 miles
Port of Philadelphia - Packer Ave Terminal	15.5 miles
Pennsylvania Turnpike	22 miles
Philadelphia International Airport	22.5 miles
Port of NY/NJ - Newark-Elizabeth Terminal	78.6 miles
New York City	86 miles



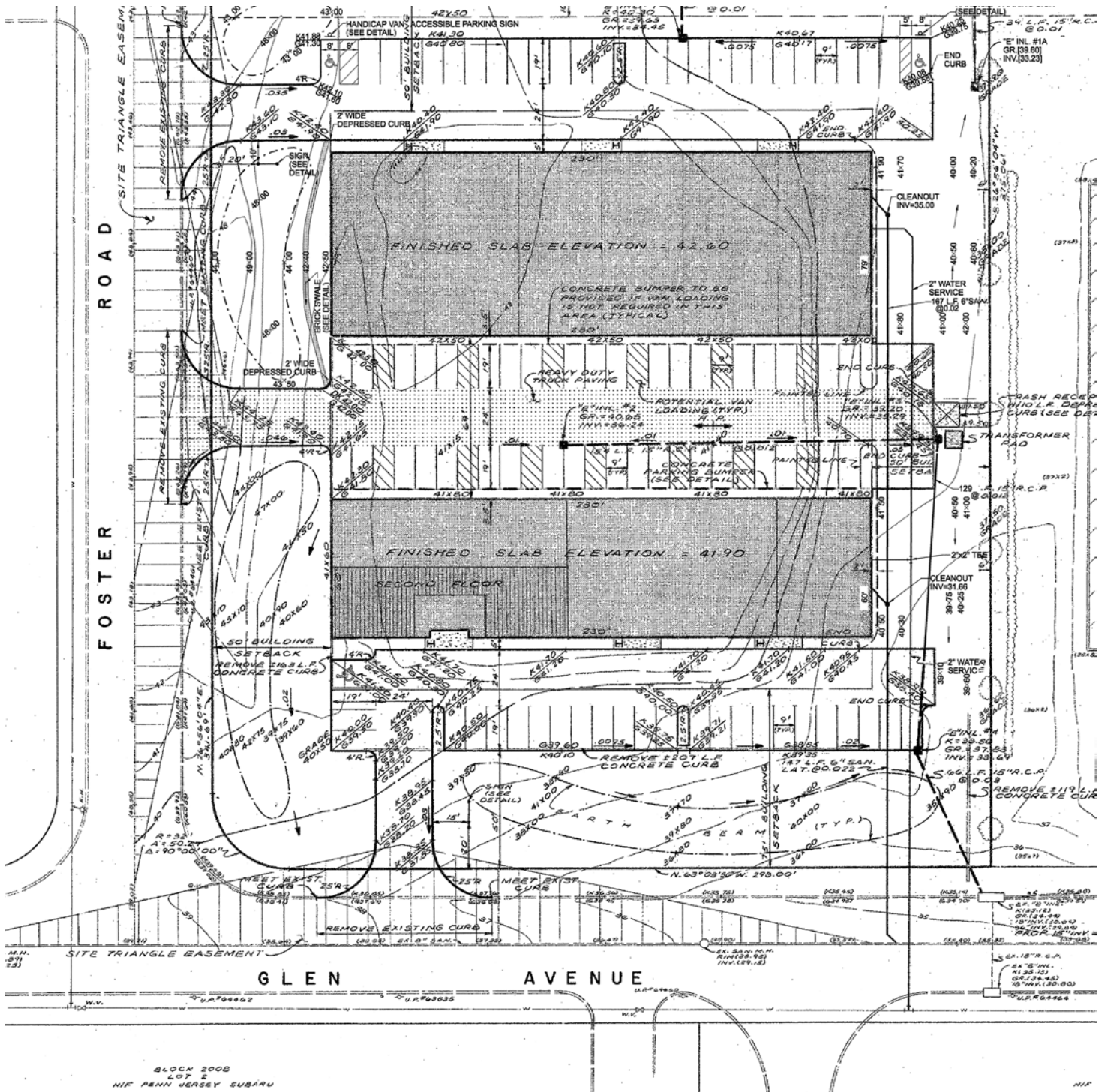
For more information:

Rebecca Ting, SIOR

+1 856 234 9600 • rebecca.ting@naimertz.com

Julie Kronfeld, SIOR

+1 856 802 6516 • julie.kronfeld@naimertz.com



For more information:

Rebecca Ting, SIOR

+1 856 234 9600 • rebecca.ting@naimertz.com

Julie Kronfeld, SIOR

+1 856 234 9600 • julie.kronfeld@naimertz.com

21 Roland Avenue
Mount Laurel NJ 08054
+1 856 234 9600

naimertz.com

NO WARRANTY OR REPRESENTATION, EXPRESS OR IMPLIED, IS MADE AS TO THE ACCURACY OF THE INFORMATION CONTAINED HEREIN, AND THE SAME IS SUBMITTED SUBJECT TO ERRORS, OMISSIONS, CHANGE OF PRICE, RENTAL OR OTHER CONDITIONS, PRIOR SALE, LEASE OR FINANCING, OR WITHDRAWAL WITHOUT NOTICE, AND OF ANY SPECIAL LISTING CONDITIONS IMPOSED BY OUR PRINCIPALS NO WARRANTIES OR REPRESENTATIONS ARE MADE AS TO THE CONDITION OF THE PROPERTY OR ANY HAZARDS CONTAINED THEREIN ARE ANY TO BE IMPLIED.