

AVAILABLE FOR SALE

— 11,616 SF AVAILABLE / 1.02 ACRES —

13750 FENKELL AVE, DETROIT, MI 48227

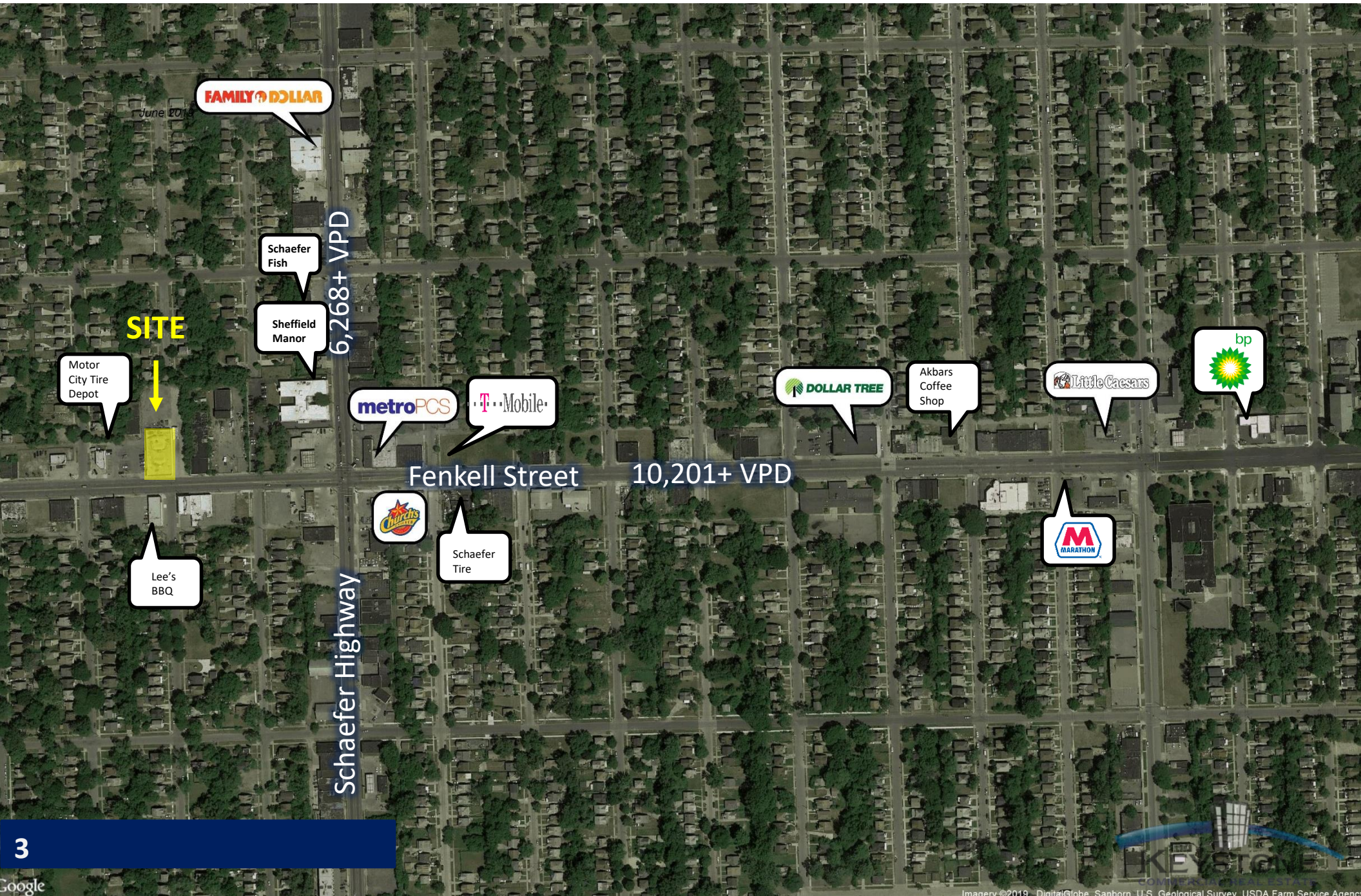


ADDITIONAL *PHOTOS*

- Sale Price \$499,000
- Sits on 1.02 Acres
- Surrounded by Rooftops and Apartments



TRADE *AERIAL*



SITE

FAMILY DOLLAR

Schaefer Fish

Sheffield Manor

Motor City Tire Depot

metroPCS

T-Mobile

DOLLAR TREE

Akbars Coffee Shop

Little Caesars

bp

Fenkell Street

10,201+ VPD

Lee's BBQ

Chick-fil-A

Schaefer Tire

MARATHON

Schaefer Highway

6,268+ VPD



SITE PLAN



**1.02
ACRES**

**11,616 SF
AVAILABLE**

2018 DEMOGRAPHICS



HOUSEHOLDS

1 MILE	7,988
3 MILES	67,681
5 MILES	166,477



CONSUMER EXPENDITURE

(RETAIL EXPENITURE)

1 MILE	\$139.55 M
3 MILES	\$1.35 B
5 MILES	\$3.34 B



POPULATION

1 MILE	20,552
3 MILES	164,871
5 MILES	409,664



INCOME

(AVERAGE HOUSEHOLD)

1 MILE	\$38,967
3 MILES	\$48,113
5 MILES	\$48,781



CONSUMER EXPENDITURE

(1 MILE RADIUS)

APPAREL	\$10.27 M
ENTERTAINMENT	\$16.05 M
FOOD	\$44.81 M
GIFTS	\$6.58 M



DAYTIME

(AGE 16 YEARS & OVER)

1 MILE	12,068
3 MILES	101,292
5 MILES	267,131

LEASE *WITH US*



FOR MORE INFORMATION

KATHLEEN GARMO

KGARMO@KEYSTONECRES.COM

248.356.8000 X 111

31000 NORTHWESTERN HIGHWAY,
SUITE 200

FARMINGTON HILLS, MI 48334

FERRIS HAMAMA

FHAMAMA@KEYSTONECRES.COM

248.356.8000 X 106

31000 NORTHWESTERN HIGHWAY,
SUITE 200

FARMINGTON HILLS, MI 48334