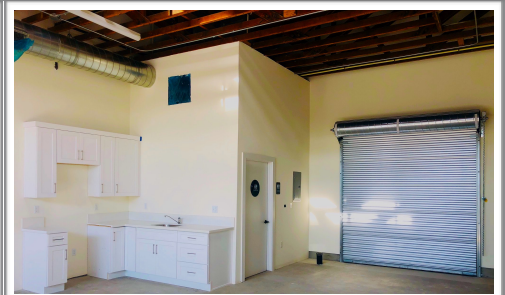


FOR LEASE

3731 E. OLYMPIC BLVD, LOS ANGELES, 90023



3731 E. Olympic Blvd. Creative Live/Work Studios

For Additional Information, Contact:

info@nickhadim.com

310-836-2121

6009 Washington Blvd.,
Culver City, CA 90232

www.nickhadim.com

LIC. # 01885300

Property Highlights:

- Former Victory Outreach Church
- Five New York Inspired Live/ Work Spaces
- Open Floor Plan with Polished Concrete Flooring
- Natural Light/ Several Large Windows/Skylight
- Private Restroom With Shower & Kitchenette
- Gated Parking
- Prime Boyle Heights Location
- Easy 5/101/10 FWY Access
- Just 2 Miles to Arts District DTLA
- Available Jan 1, 2020

Unit 101 APX. 1,650 SF \$3495

Unit 102 APX. 1,250 SF \$2795

Unit 103 APX. 1,150 SF \$2595

Unit 104 APX. 1,000 SF \$2275

Unit 105 APX. 1,200 SF \$2695

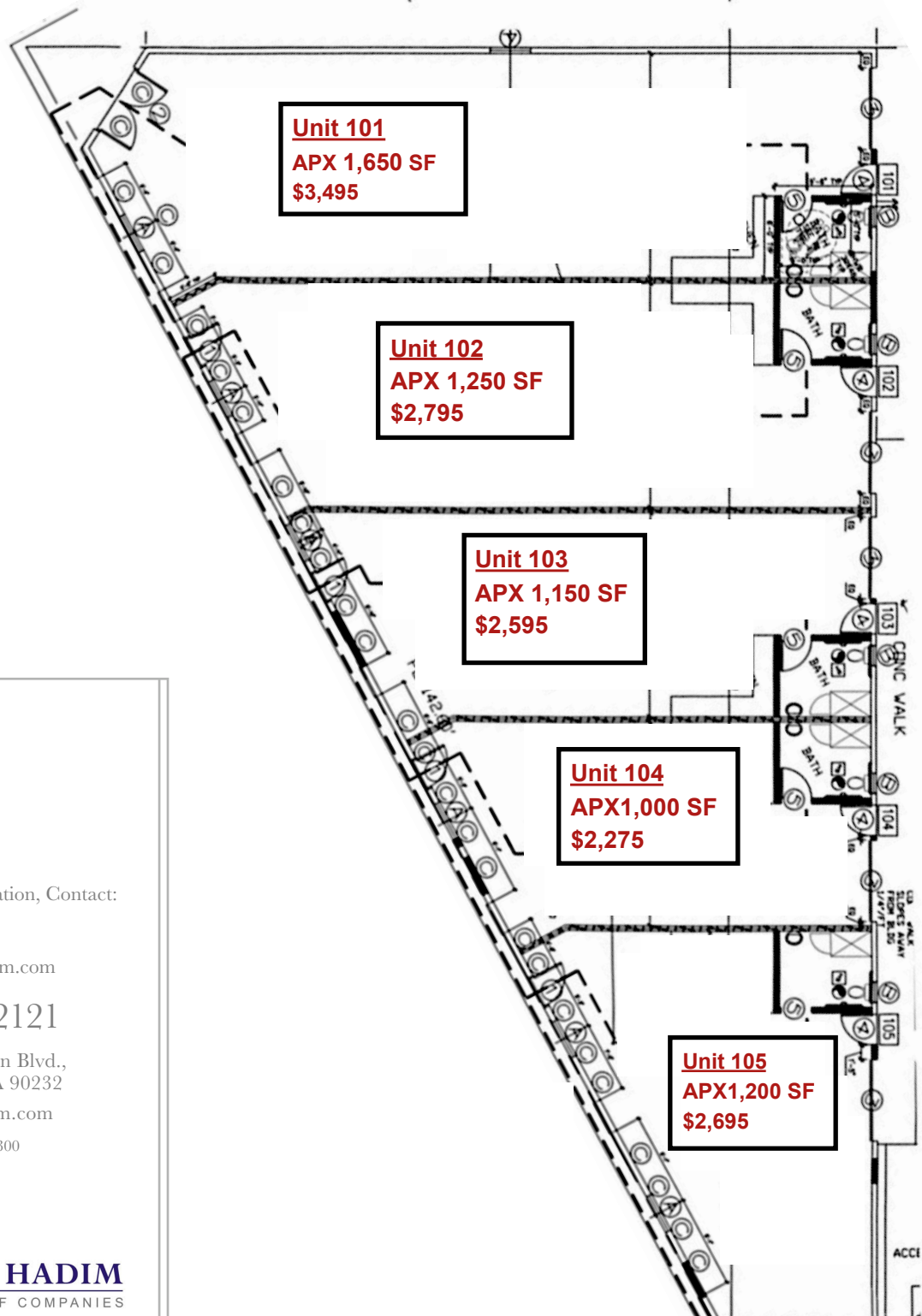


NICK HADIM
GROUP OF COMPANIES

ALL INFORMATION DEEMED RELIABLE BUT NOT GUARANTEED

FLOOR PLAN

3751 E. OLYMPIC BLVD., LOS ANGELES, 90023



For Additional Information, Contact:

info@nickhadim.com

310-836-2121

6009 Washington Blvd.,
Culver City, CA 90232

www.nickhadim.com

LIC. # 01885300



NICK HADIM
GROUP OF COMPANIES

ALL INFORMATION DEEMED RELIABLE BUT NOT GUARANTEED

THE STORY

3751 E. OLYMPIC BLVD., LOS ANGELES, 90023



For Additional Information, Contact:

info@nickhadim.com

310-836-2121

6009 Washington Blvd.,
Culver City, CA 90232

www.nickhadim.com

LIC. # 01885300

The History

Since their humble beginning in the early 60s, Victory Outreach grew from one church at 3751 E. Olympic Blvd. to a worldwide network of over 700 churches and ministries, with locations across America and in 30 countries from the Philippines to the Netherlands.

Almost 50 years later, we got our hands on their original location which was reimagined by us into what we call "Flats 3751". We decided to keep its original charm, and convert it into Live/ Work Studios to suit today's Living/ business world.

The subject offers 9 Creative Live/Work Studios, and 1 Commercial Unit, of different sizes in two floors with an arcade that serves as a corridor. As you walk into the building you enjoy the natural light that shines through the massive skylights, and totally feels like outdoor. High Wood Beam Ceiling and allure all over the place.

Reserve your space in the brand new Flats 3751 where you get to live/ work, and play!

Owned and operated as a church by The Victory Outreach since the early 60s.



NICK HADIM
GROUP OF COMPANIES