

FOR LEASE

BOND STREET BUILDING
31600-31700 WEST 13 MILE ROAD
FARMINGTON HILLS, MI 48334



PROPERTY FEATURES:

- Single and two story office
- Attractive Farmington Hills location adjacent to sports park
- Close access from parking to premises
- Above average window coverage
- Full Service, Gross Rent - no variable or hidden costs
- Attractive Farmington Hills location at Orchard Lake Road and W 13 Mile Road
- Easy access to I-696 and major roads
- Ideal spaces for 742 SF to 2,288 SF
- **5% Co-Broker commissions paid upon lease execution**
- **See floor plans and suite videos at www.friedmanrealestate.com/Bond Street Office**



FOR MORE INFORMATION PLEASE CONTACT:

STEVE EISENSHTADT

steve.eisenshtadt@freg.com

DAVID LAW

david.law@freg.com

248.324.2000

eCODE 326

FOR LEASE

BOND STREET BUILDING
31600-31700 WEST 13 MILE ROAD
FARMINGTON HILLS, MI 48334



AVAILABLE SUITES

SPACE	SPACE USE	LEASE RATE	LEASE TYPE	SIZE (SF)	TERM
SUITE 107	Office Building	\$16.95 SF/yr	Gross	1,463 SF	Negotiable
SUITE 122	Office Building	\$16.95 SF/yr	Gross	1,250 SF	Negotiable
SUITE 123/125	Office Building	\$16.95 SF/yr	Gross	2,062 SF	Negotiable
SUITE 127A	Office Building	\$16.95 SF/yr	Gross	742 SF	Negotiable
SUITE 129	Office Building	\$16.95 SF/yr	Gross	1,314 SF	Negotiable
SUITE 206	Office Building	\$16.95 SF/yr	Gross	1,188 SF	Negotiable
SUITE 208	Office Building	\$16.95 SF/yr	Gross	2,885 SF	Negotiable
SUITE 218	Office Building	\$16.95 SF/yr	Gross	999 SF	Negotiable

FOR MORE INFORMATION PLEASE CONTACT:

STEVE EISENSHTADT steve.eisenshtadt@freg.com

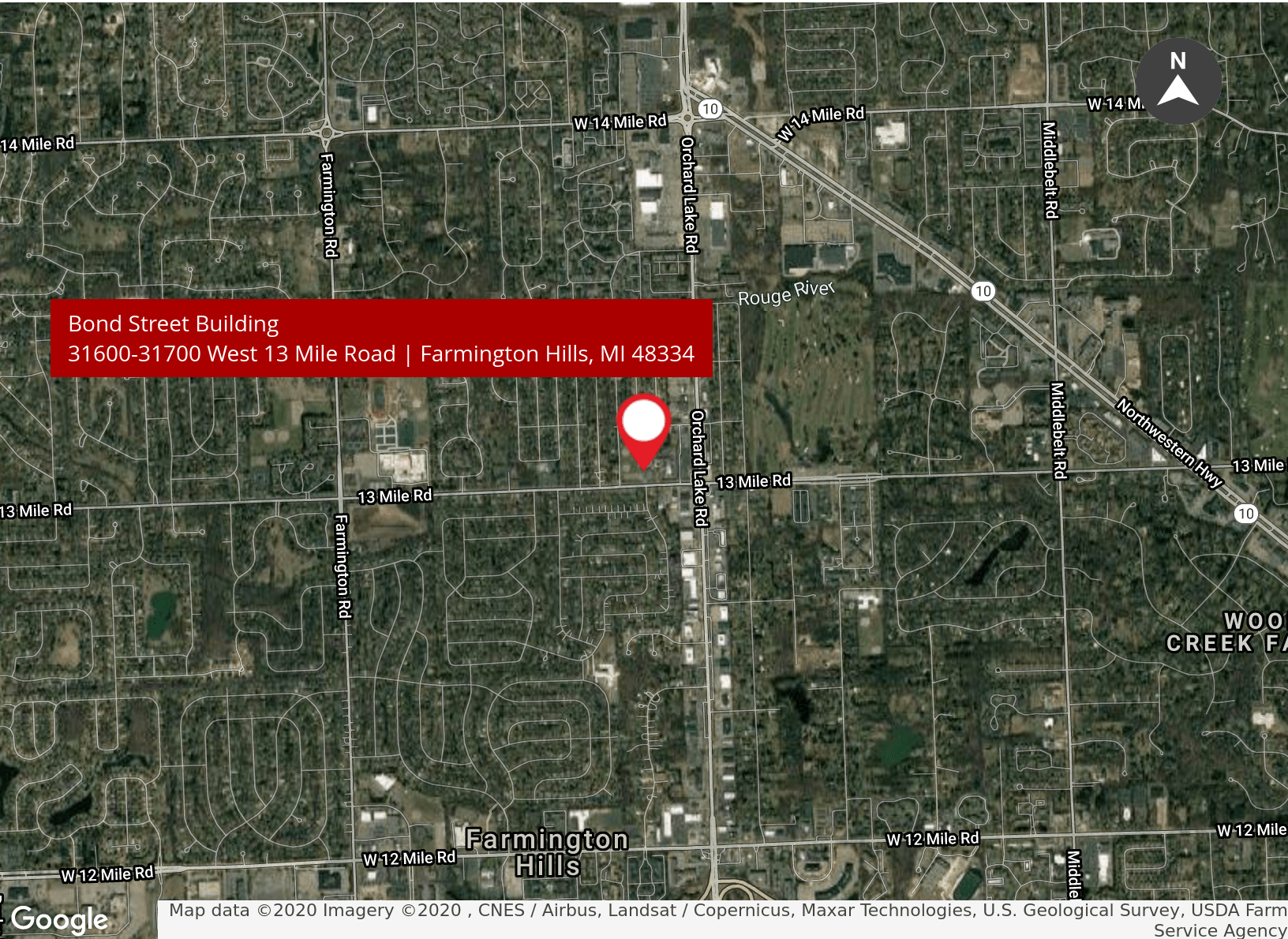
DAVID LAW david.law@freg.com

248.324.2000

eCODE 326

FOR LEASE

BOND STREET BUILDING
31600-31700 WEST 13 MILE ROAD
FARMINGTON HILLS, MI 48334



Bond Street Building
31600-31700 West 13 Mile Road | Farmington Hills, MI 48334

Map data ©2020 Imagery ©2020 , CNES / Airbus, Landsat / Copernicus, Maxar Technologies, U.S. Geological Survey, USDA Farm Service Agency

TRAFFIC COUNTS

INTERSECTION

CARS PER DAY

W 13 Mile Road & Orchard Lake Road E	22,591
Orchard Lake Rd & W 13 Mile Rd S	29,299
Orchard Lake Rd & W 13 Mile Rd N	31,068
W 13 Mile Rd & Eastfield St E	22,481

DEMOGRAPHICS

1 MILE

3 MILES

5 MILES

Total Households	3,371	23,998	74,584
Total Population	7,514	62,051	182,822
Average HH Income	\$82,051	\$109,286	\$104,371

FOR MORE INFORMATION PLEASE CONTACT:

STEVE EISENSHTADT steve.eisenshtadt@freg.com

DAVID LAW david.law@freg.com

248.324.2000

eCODE 326