

Tukwila Interurban Building

6275 South 143rd Place
Tukwila, WA

First time on market
in over 35 years!

Approx 8,400 SF total / 1,200
SF office

Zoned C/LI allows warehouse,
manufacturing, some retail,
office, contractor yards, auto
sales (very flexible zoning)

Freestanding building on 26,153
SF site

Tremendous exposure to
Interurban Avenue S

1 dock high door
2 drive-in doors

Approx 10,400 SF gravelled yard
potentially available seperately

Available February 1, 2019

\$9,480/month, NNN



Location



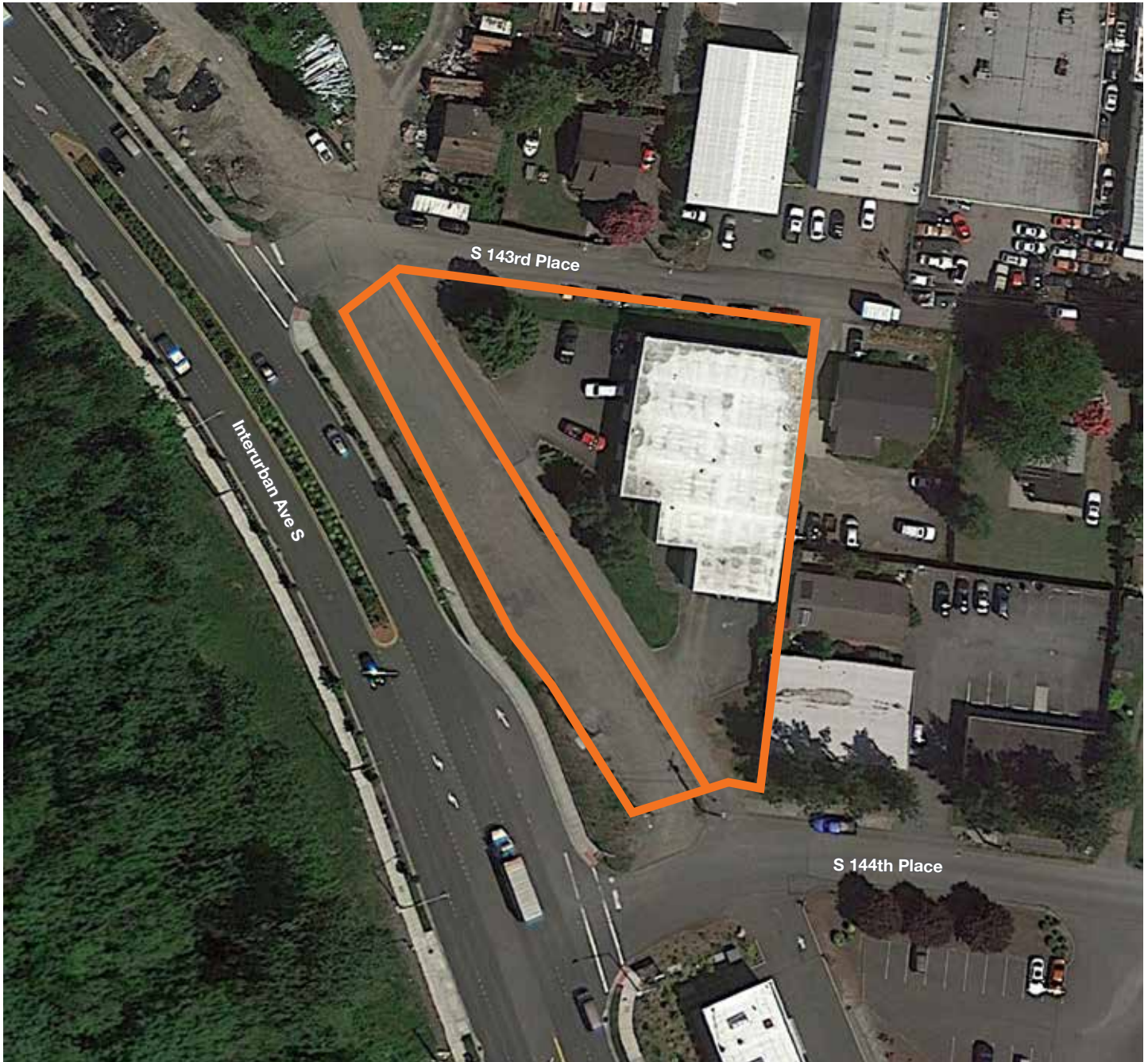
Contact

Doug Klein, SIOR

206.248.7348

dklein@kiddermathews.com

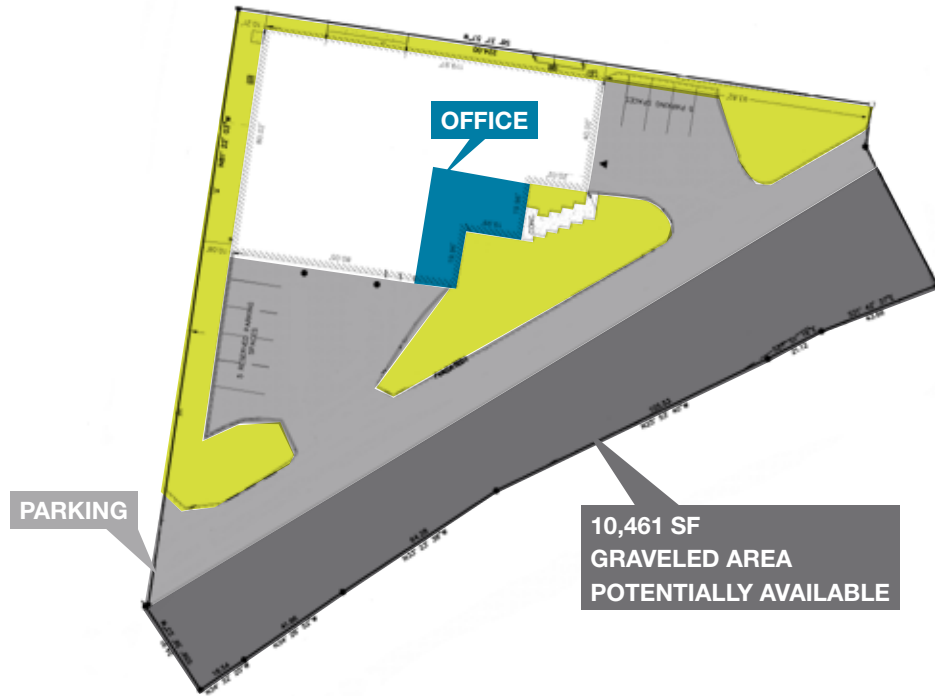
Aerial



Contact

Doug Klein, SIOR
206.248.7348
dklein@kiddermathews.com

Floor Plan



Dock and potential yard view

Contact

Doug Klein, SIOR
206.248.7348
dklein@kiddermathews.com