

SINGLE FLOOR UNIT 900 FOR SALE

# 1430K

WASHINGTON, D.C.



**CBRE**

# PROPERTY OVERVIEW

**1430K**  
WASHINGTON, D.C.



**BUILDING SIZE**  
74,600 SF



**ZONING**  
C-4



**UNIT 900 FLOOR SIZE**  
6,508 SF - Comprising the entire floor



**FLOORS**  
12



**YEAR BUILT**  
2006



**ELEVATOR**  
2 elevator cabs serve the building



**BUILDING TAX IDENTIFICATION**  
Lot 81, Square 218



**PARKING**  
Parking units P-20 and P-21 included in purchase price.

## 9TH FLOOR SPACE FEATURES

### SPACE FEATURES:

- + Column free space
- + Three sides of glass
- + Floor to ceiling glass overlooking K Street
- + Designed cutouts to provide expansive views of K Street (Georgetown to East End)
- + Shell condition floor, with finished restrooms

- + Roof repair
- + Drywall repair
- + On-site security and monitoring
- + Full floor

### CONDOMINIUM SERVICES INCLUDE:

- + Building maintenance
- + HVAC services
- + Elevator services
- + Snow removal
- + Exterminator services
- + General maintenance
- + Janitorial service
- + Sprinkler service
- + Fire safety services
- + Window cleaning



# HYPOTHETICAL TEST FITS

# 1430K

WASHINGTON, D.C.



3 Conference Rooms  
10 Offices

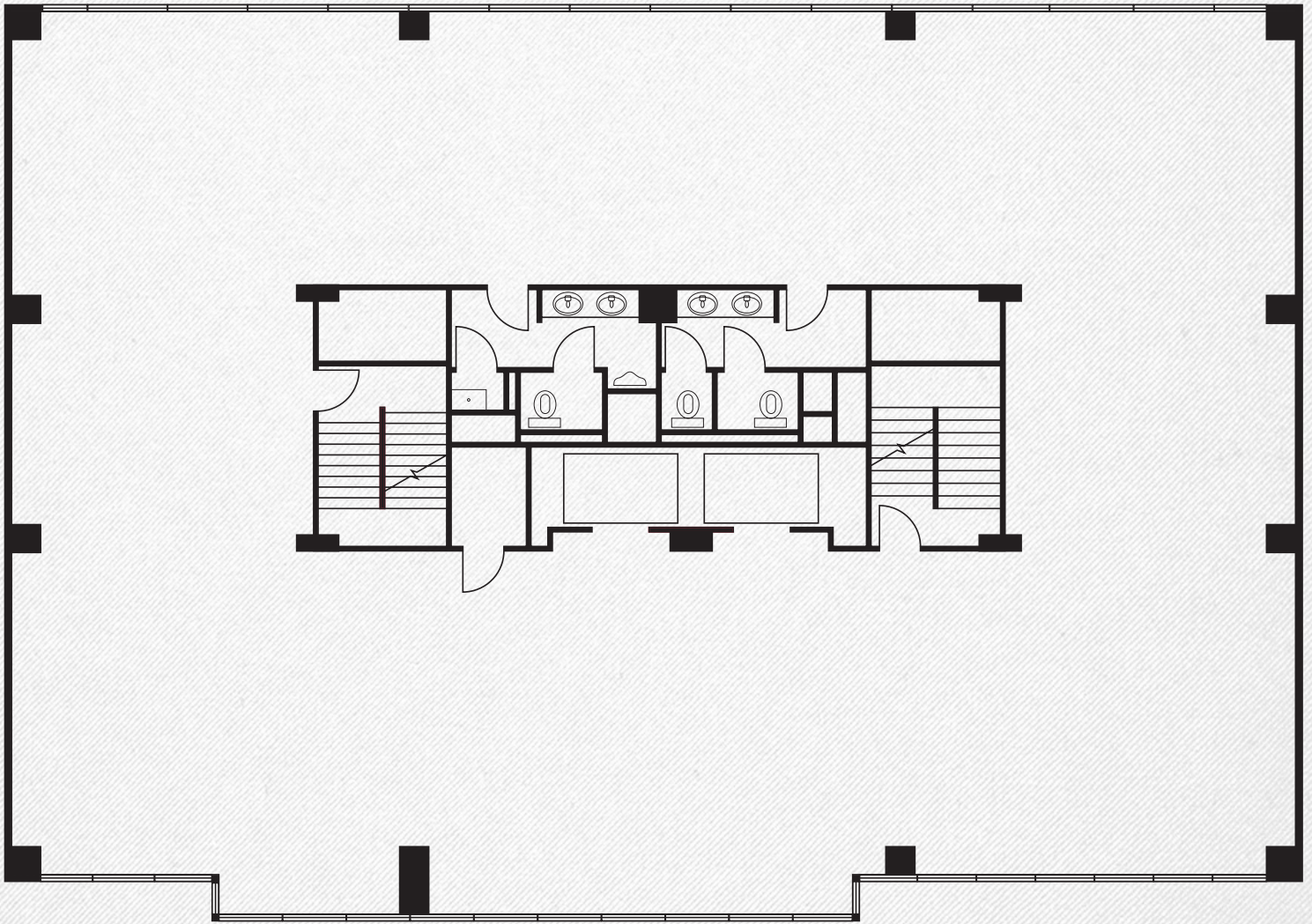


3 Conference Rooms  
5 Offices  
16 Work Stations



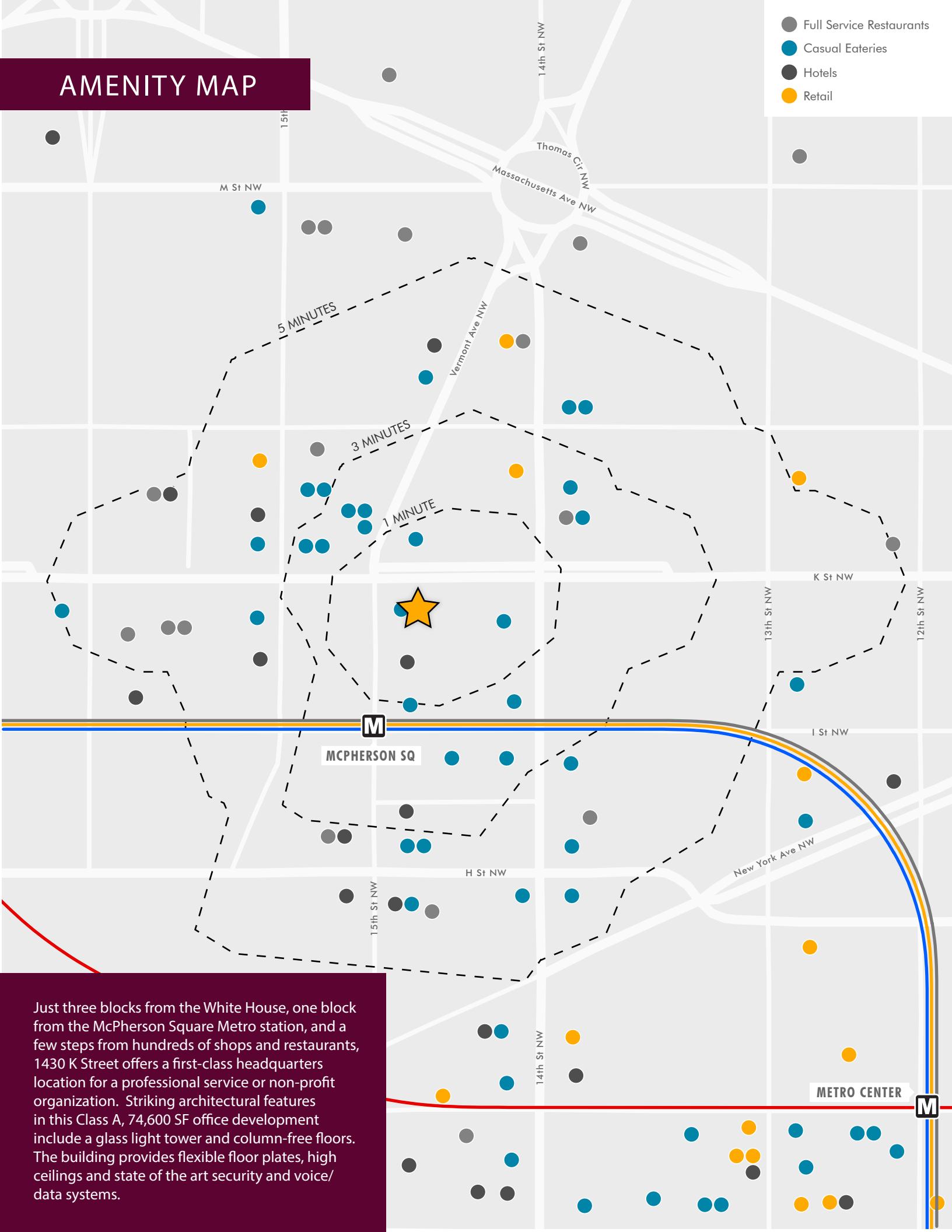
9TH FLOOR SHELL FLOOR PLAN  
6,508 SQ. FT.

**1430K**  
WASHINGTON, D.C.



# AMENITY MAP

- Full Service Restaurants
- Casual Eateries
- Hotels
- Retail



Just three blocks from the White House, one block from the McPherson Square Metro station, and a few steps from hundreds of shops and restaurants, 1430 K Street offers a first-class headquarters location for a professional service or non-profit organization. Striking architectural features in this Class A, 74,600 SF office development include a glass light tower and column-free floors. The building provides flexible floor plates, high ceilings and state of the art security and voice/data systems.

DISCOVER THE DIFFERENCE

# 1430K

WASHINGTON, D.C.

## FOR ADDITIONAL INFORMATION

BRADLEY WILNER  
Senior Vice President  
+1 301 215 4127  
[brad.wilner@cbre.com](mailto:brad.wilner@cbre.com)

CHARLENE BOGDANOR  
Senior Associate  
+1 202 609 6819  
[charlene.bogdanor@cbre.com](mailto:charlene.bogdanor@cbre.com)

CHAD BARBIASZ  
Associate  
+1 202 585 5658  
[chad.barbiasz@cbre.com](mailto:chad.barbiasz@cbre.com)

**CBRE**