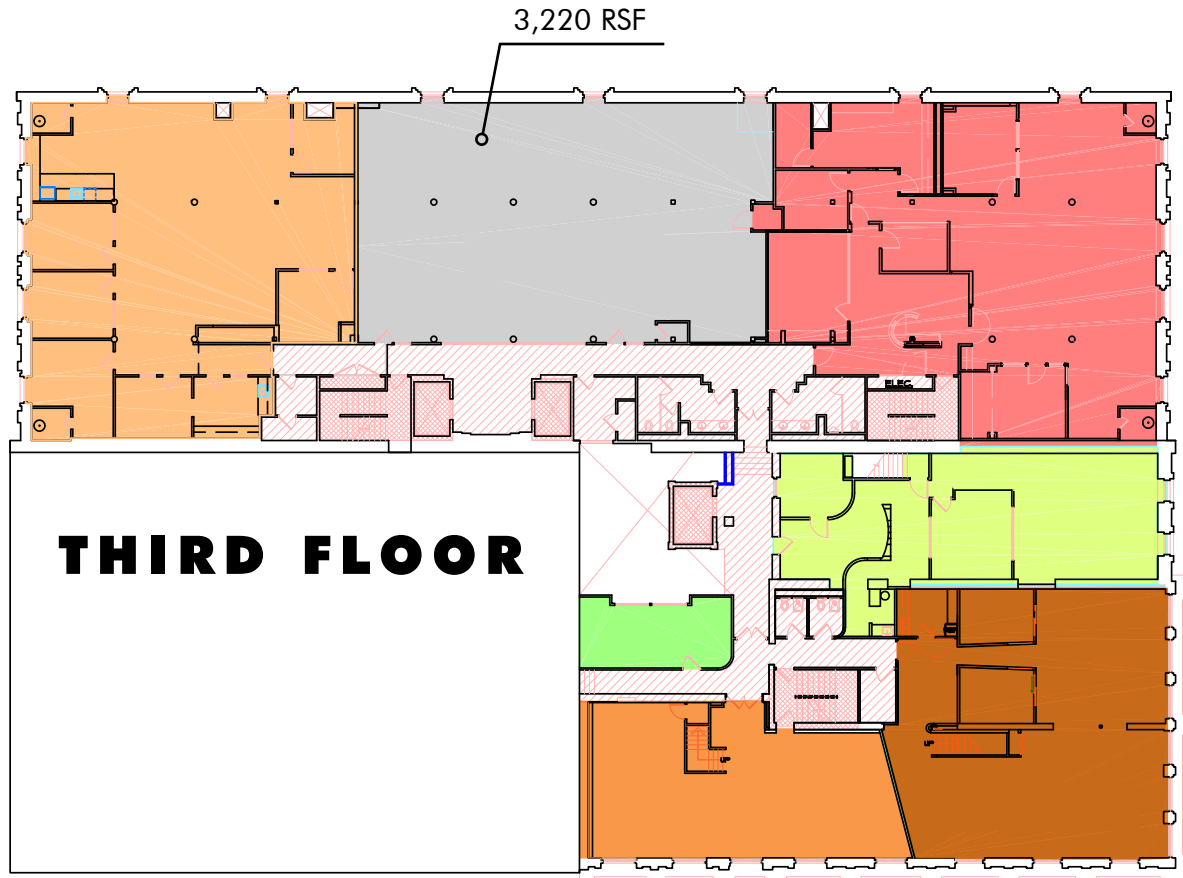


OFFICE
SPACE

NEW MARKET
THEATER BLOCK

115 SW ASH STREET :: PORTLAND, OR 97204



FOR MORE
INFORMATION
PLEASE
CONTACT

Trevor Kafoury
Licensed in OR
+1 503 221 4896
trevor.kafoury@cbre.com
www.cbre.com/trevor.kafoury

Tiffany West
Licensed in OR
+1 503 221 4857
tiffany.west@cbre.com
www.cbre.com/tiffany.west

OFFICE SPACE FOR LEASE

NEW MARKET
THEATER BLOCK

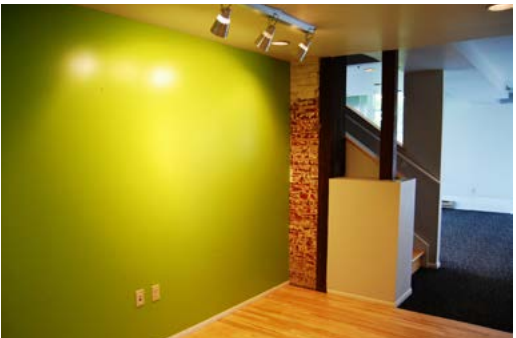
115 SW ASH STREET :: PORTLAND, OR 97204

Rents starting as low as \$18.50/SF, Full Service Gross



AMENITIES INCLUDE:

- On MAX line
- Waterfront Park proximity
- Easy access to Esplanade
- Creative space
- High ceilings
- Exposed brick
- Bike storage
- On-site parking
- Local ownership and on-site management



CBRE | 1300 SW Fifth Ave. | Suite 3000 | Portland, OR 97201 | www.cbre.com/portland

© 2014 CBRE, Inc. This information has been obtained from sources believed reliable. We have not verified it and make no guarantee, warranty or representation about it. Any projections, opinions, assumptions or estimates used are for example only and do not represent the current or future performance of the property. You and your advisors should conduct a careful, independent investigation of the property to determine to your satisfaction the suitability of the property for your needs. Photos herein are the property of their respective owners and use of these images without the express written consent of the owner is prohibited.

CBRE

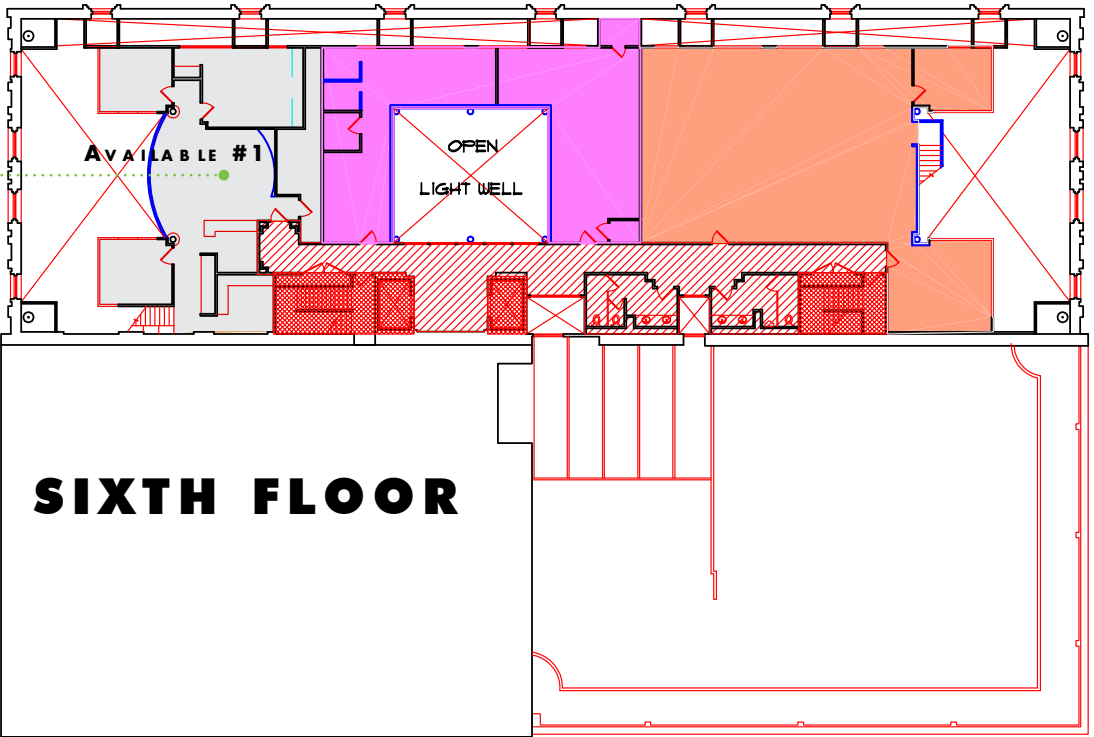
FOR MORE
INFORMATION
PLEASE
CONTACT

Trevor Kafoury
+1 503 221 4896
trevor.kafoury@cbre.com
www.cbre.com/trevor.kafoury
The brokers are licensed in the State of Oregon

Tiffany West
+1 503 221 4857
tiffany.west@cbre.com
www.cbre.com/tiffany.west

CBRE

NEW MARKET
THEATER BLOCK PORTLAND, OREGON
115 SW ASH STREET :: PORTLAND, OR 97204



Availability #1:
4,565 RSF available
on two floors

