

QUASI-RETAIL OFFICE WAREHOUSE



LEASE RATE \$1,080.00 MG

Property Highlights

- Size: 1,440 SF
- Office: 320 SF
- Warehouse: 1,120 SF
- Ceiling height: 16'
- Door: (1) 12' x 12'
- Zoning: M
- Excellent visibility from Redwood Road
- Less than one minute from freeway
- Skylight in warehouse
- Fire sprinkled
- Showroom



Bob Mills
Executive Director
+1 801 303 5551
bmills@comre.com

170 South Main Street, Suite 1600
Salt Lake City, UT 84101
Main +1 801 322 2000
Fax +1 801 322 2040
comre.com

Independently Owned and Operated / A Member of the Cushman & Wakefield Alliance

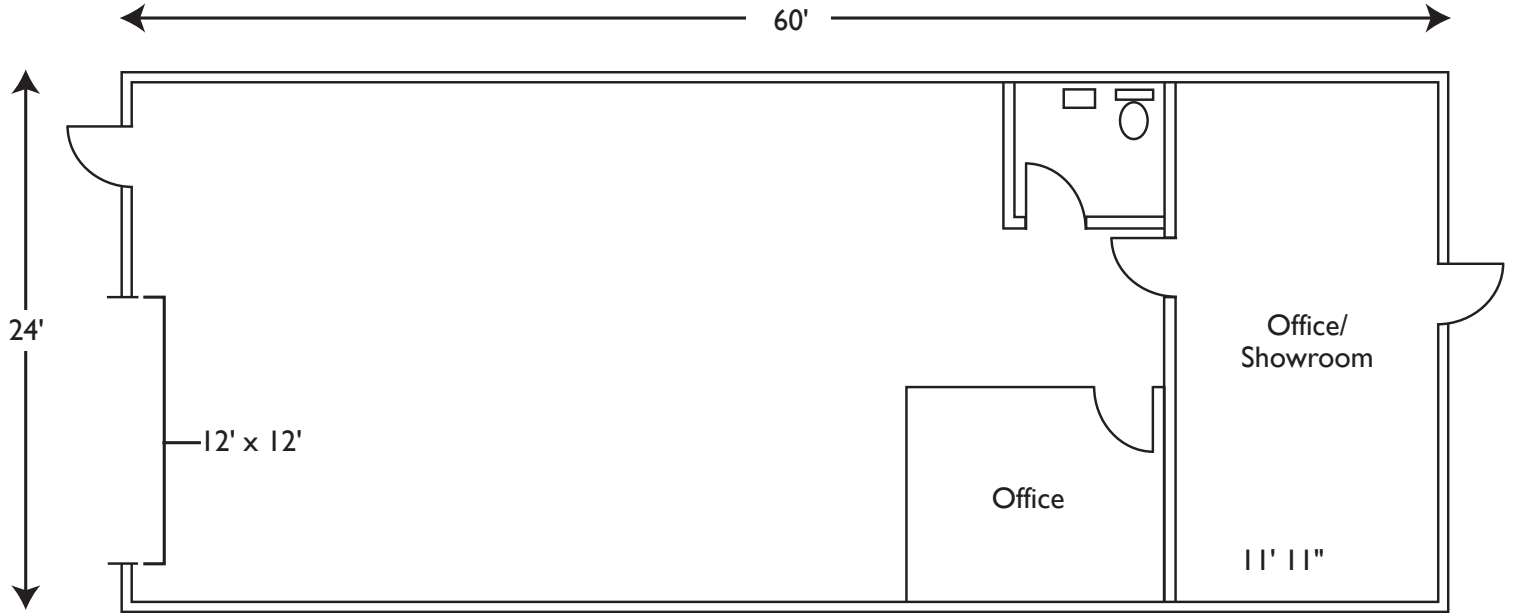
Cushman & Wakefield Copyright 2017. No warranty or representation, express or implied, is made to the accuracy or completeness of the information contained herein, and same is submitted subject to errors, omissions, change of price, rental or other conditions, withdrawal without notice, and to any special listing conditions imposed by the property owner(s). As applicable, we make no representation as to the condition of the property (or properties) in question. (path: G:\1 - Projects\Mills, B\1 - Flyers\2358 S Redwood Rd)



**CUSHMAN &
WAKEFIELD**
Commerce

FOR LEASE

2358 South Redwood Road
West Valley City, Utah



Bob Mills
Executive Director
+1 801 303 5551
bmills@comre.com

170 South Main Street, Suite 1600
Salt Lake City, UT 84101
Main +1 801 322 2000
Fax +1 801 322 2040
comre.com

Independently Owned and Operated / A Member of the Cushman & Wakefield Alliance

Cushman & Wakefield Copyright 2017. No warranty or representation, express or implied, is made to the accuracy or completeness of the information contained herein, and same is submitted subject to errors, omissions, change of price, rental or other conditions, withdrawal without notice, and to any special listing conditions imposed by the property owner(s). As applicable, we make no representation as to the condition of the property (or properties) in question. (path: G:\1 - Projects\Mills, B\1 - Flyers\2358 S Redwood Rd)