

# WLTC

WILLOW LAKE TECH CENTER  
**BUSINESS CAMPUS  
SETTING**



**DIRECT ACCESS TO  
I-90 VIA ROSELLE RD**

±2,376 SF OFFICE SPACE AVAILABLE

# FOR LEASE

424 E. STATE PARKWAY | SCHAUMBURG, IL 60173




**HIGH-SPEED DATA CENTER  
CONNECTIVITY AVAILABLE**



**TRANSWESTERN®**

**ROSS LEHRMAN**  
Senior Associate  
847.588.5671  
ross.lehrman@transwestern.com

**JUSTIN LERNER, SIOR**  
Executive Vice President  
847.588.5665  
justin.lerner@transwestern.com

 This is an interactive PDF. Click to visit various websites or email the brokers.

±2,376 SF OFFICE SPACE AVAILABLE

# FOR LEASE

424 E. STATE PARKWAY | SCHAUMBURG, IL 60173



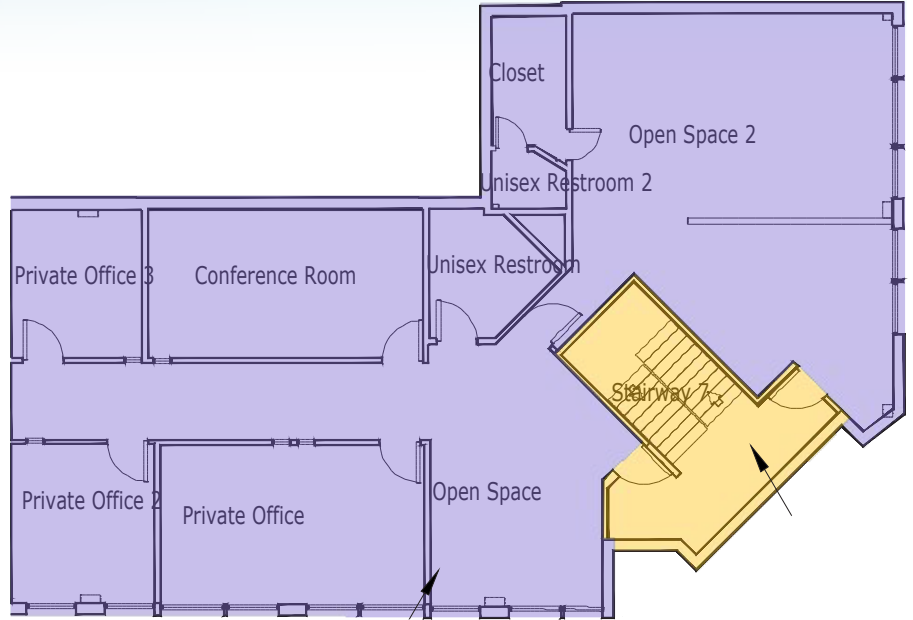
## SPECIFICATIONS

- Building Size: ±105,007 SF
- Available Size: ±2,376 SF
- Parking Ratio: 2.4/1000 SF
- Year Built: 1997
- Lease Rate: \$12.50 PSF Modified Gross

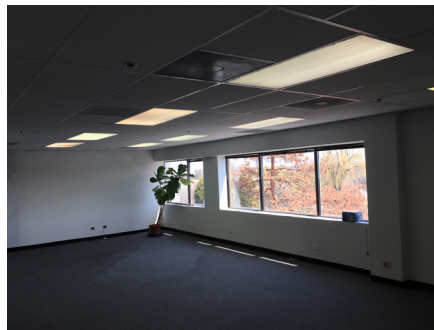
## HIGHLIGHTS

- Willow Lake Tech Center
- High-image flex facility
- Direct access to I-90 via Roselle Road
- Professionally owned and managed
- High-speed data center connectivity available

## FLOOR PLAN



## PHOTOS



ROSS LEHRMAN

JUSTIN LERNER, SIOR

847-588-5671

847-588-5665

ROSS.LEHRMAN@TRANSWESTERN.COM

JUSTIN.LERNER@TRANSWESTERN.COM

The information provided herein was obtained from sources believed reliable; however, Transwestern makes no guarantees, warranties or representations as to the completeness or accuracy thereof. The presentation of this property is submitted subject to errors, omissions, change of price or conditions, prior sale or lease, or withdrawal without notice. Copyright © 2020 Transwestern.

# WLTC

WILLOW LAKE TECH CENTER  
**BUSINESS CAMPUS  
SETTING**



**DIRECT ACCESS TO  
I-90 VIA ROSELLE RD**

±2,052 SF OFFICE SPACE AVAILABLE  
**FOR LEASE**

436 E. STATE PARKWAY | SCHAUMBURG, IL 60173



**HIGH-SPEED DATA CENTER  
CONNECTIVITY AVAILABLE**



**TRANSWESTERN®**

**ROSS LEHRMAN**  
Senior Associate  
847.588.5671  
ross.lehrman@transwestern.com

**JUSTIN LERNER, SIOR**  
Executive Vice President  
847.588.5665  
justin.lerner@transwestern.com

This is an interactive PDF. Click to visit various websites or email the brokers.

±2,052 SF OFFICE SPACE AVAILABLE



# FOR LEASE

436 E. STATE PARKWAY | SCHAUMBURG, IL 60173

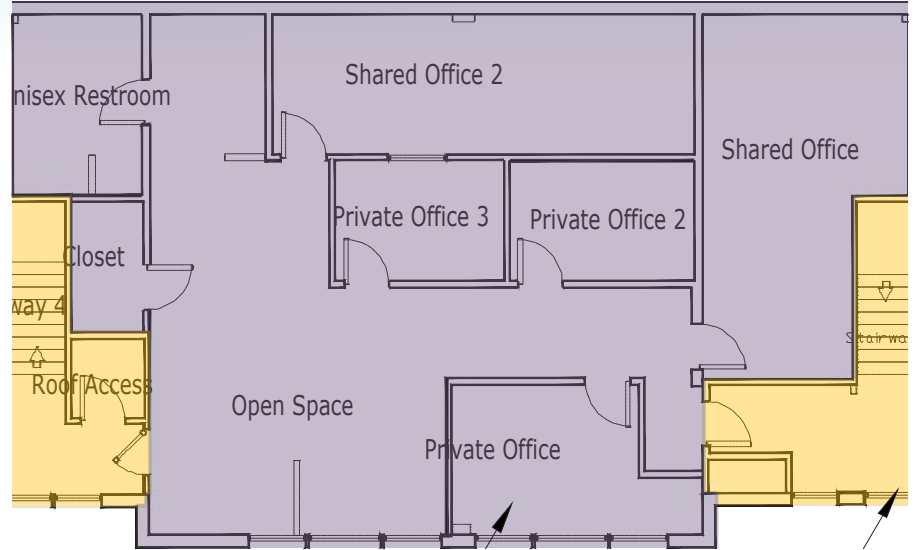
## SPECIFICATIONS

- Building Size: ±105,007 SF
- Available Size: ±2,052 SF
- Parking Ratio: 2.4/1000 SF
- Year Built: 1997
- Lease Rate: \$12.50 PSF Modified Gross

## HIGHLIGHTS

- Willow Lake Tech Center
- High-image flex facility
- Direct access to I-90 via Roselle Road
- Professionally owned and managed
- High-speed data center connectivity available

## FLOOR PLAN



## PHOTOS



ROSS LEHRMAN

JUSTIN LERNER, SIOR

847-588-5671

847-588-5665

ROSS.LEHRMAN@TRANSWESTERN.COM

JUSTIN.LERNER@TRANSWESTERN.COM

The information provided herein was obtained from sources believed reliable; however, Transwestern makes no guarantees, warranties or representations as to the completeness or accuracy thereof. The presentation of this property is submitted subject to errors, omissions, change of price or conditions, prior sale or lease, or withdrawal without notice. Copyright © 2020 Transwestern.