

3769


24TH STREET

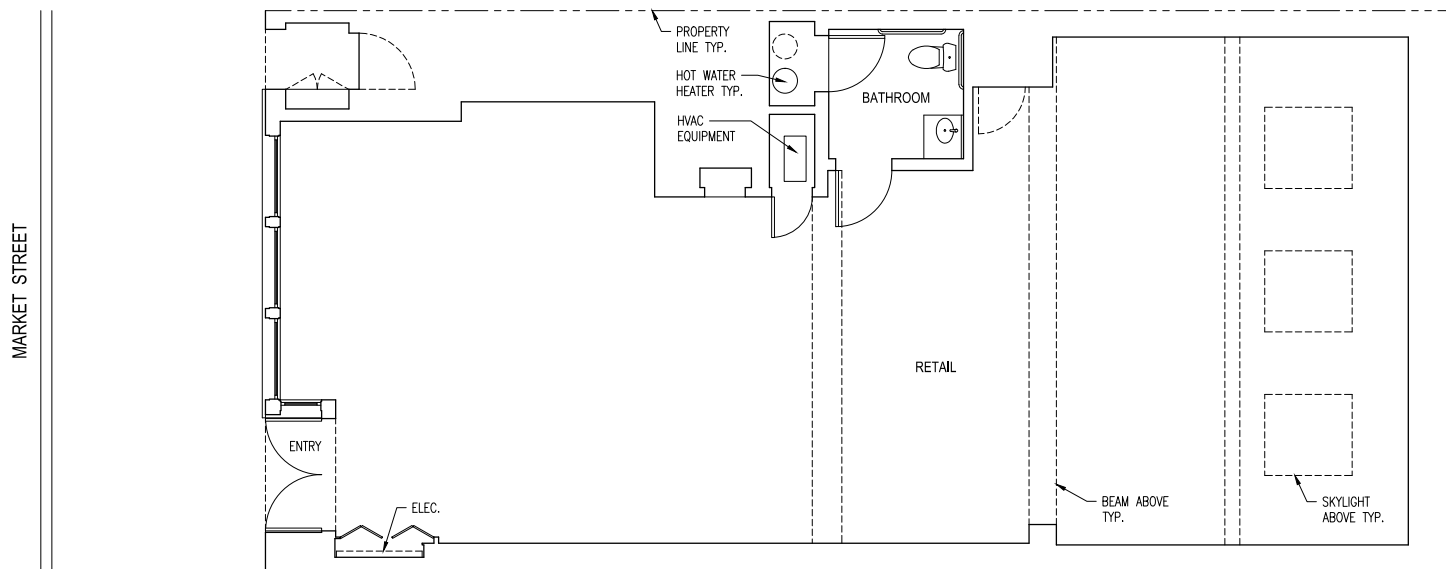
RETAIL SPACE FOR LEASE



3769 | 24TH STREET • Features & Floor Plan

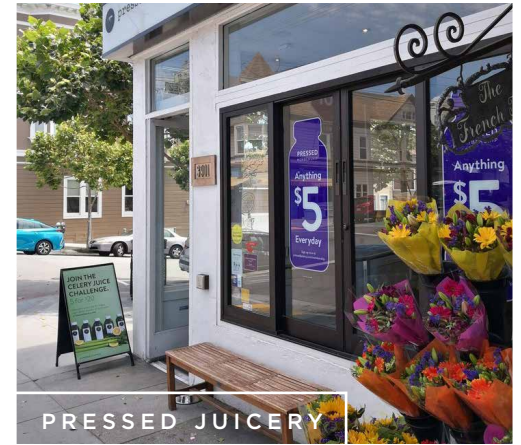
FEATURES:

-  +/- 1,746 SF
-  Wide 24th Street Storefront @ Church Street
-  Excellent Visibility
-  Zoning: NCD - 24th Street - Noe Valley Neighborhood Commercial
-  Nearby Neighbors Include Whole Foods, Pressed Juicery, Fresca, Anthem, 24 Hour Fitness, La Boulangerie, and More
-  Close to BART & MUNI: J Church, 36 Eureka, 24 Divisadero, 48 Quintera
-  Street & Monthly Parking Nearby



3769 | 24TH STREET • Map





NEIGHBORHOOD



3769

24TH STREET

RETAIL SPACE FOR LEASE

maven
RETAIL • OFFICE • INDUSTRIAL

HALEY KLEIN
415.404.7330

haley@mavenproperties.com
BRE #01907308

SANTINO DEROSE
office 415.404.7337

sd@mavenproperties.com
BRE #01338326

NOTICE: This information has been secured from sources we believe to be reliable but we make no representations, warranties, express or implied, as to the accuracy of the information. Listing broker has been given enough information to provide only a preliminary interest in the property. The materials are not to be considered fact. The information contained herein is not a substitute for thorough due diligence investigation. References to square footage, zoning, use, or age are approximate. Please contact the San Francisco Planning Department to verify zoning at (415) 558-6378, as neither broker or landlord represent that this space is suitable for your use. Tenant or Buyer must verify the information at their own expense and bears all the risk for any inaccuracies. By receiving these materials you are agreeing to the disclaimers set forth herein. BRE#01878802

466 Green Street Suite #203 | San Francisco, CA 94133 | 415.781.7700