

WALKER FARM

SWC BARNES ROAD & WHITE ROAD | PINAL COUNTY, ARIZONA

LOCATION The Property is located 1 mile west of Barnes Road and Amarillo Valley Road in Pinal County, Arizona

SIZE ±280 acres

PRICE \$3,080,000 (\$11,000/acre)

PARCEL 501-01-008J

ZONING GR, Pinal County

ANNUAL TAXES \$10,348.46 (2018)

IRRIGATION Maricopa Stanfield Irrigation District

WATER RIGHTS ±253 acres have water rights with MSIDD. [Click here to view the water rights.](#)

COMMENTS Crops grown in the region are alfalfa, cotton, pecans, melons, and specialty produce crops.

Is NOT located within the floodplain and soils are of 100% sandy loam prime farmland.

Two Reinke pivot sprinkler systems currently irrigate ±173 acres.

Property is NOT subject to a lease.

Farm is located south of the fast growing city of Maricopa. There were just over 1,000 new home permits submitted in 2018 for

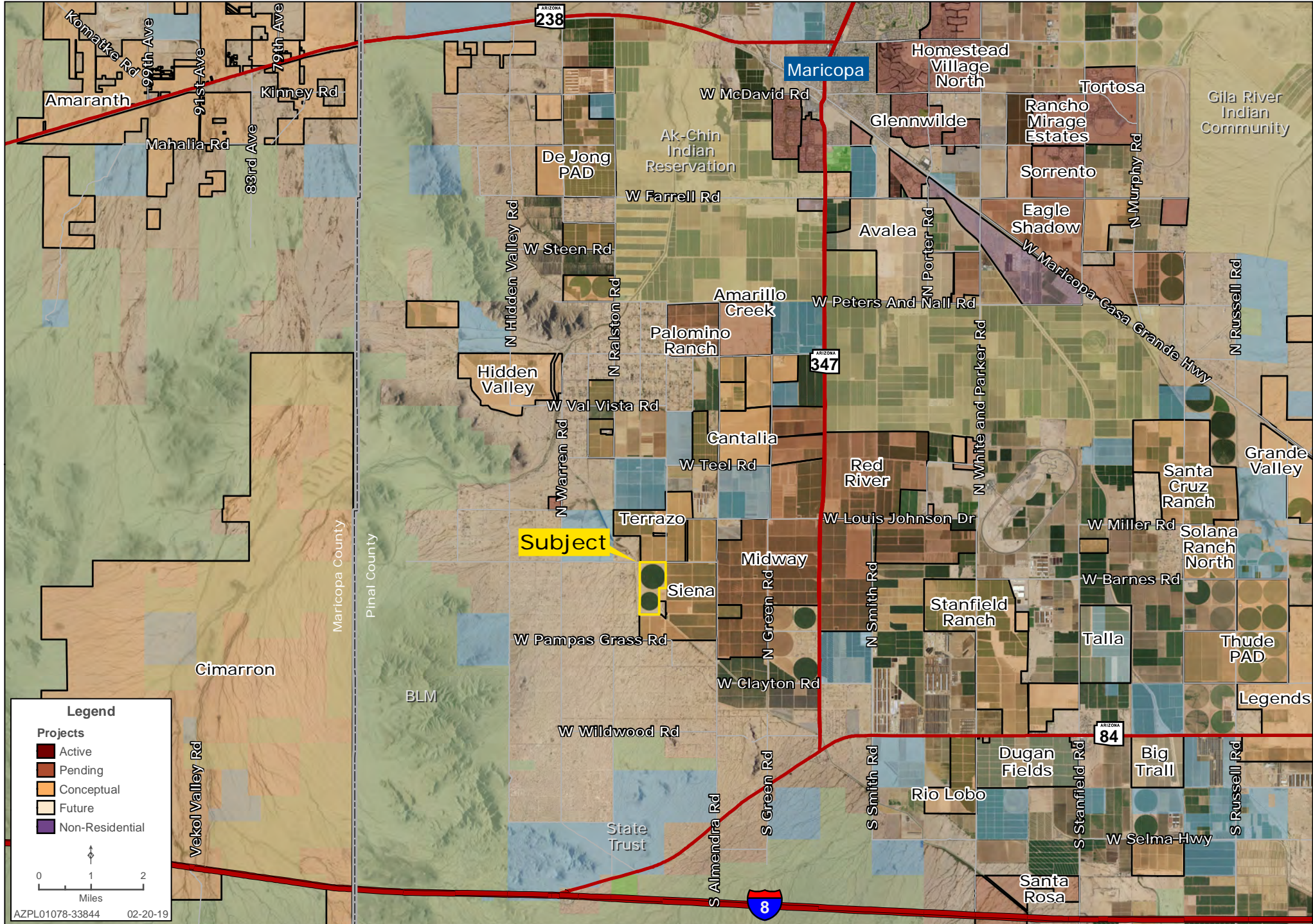
Bobby Wuertz | bwuertz@landadvisors.com

4900 North Scottsdale Road, Suite 3000, Scottsdale, Arizona 85251 ph. 480.483.8100 | www.landadvisors.com

The information contained herein is from sources deemed reliable. We have no reason to doubt its accuracy but do not guarantee it. It is the responsibility of the person reviewing this information to independently verify it. This package is subject to change, prior sale or complete withdrawal. AZPL01078 - 11.5.2019

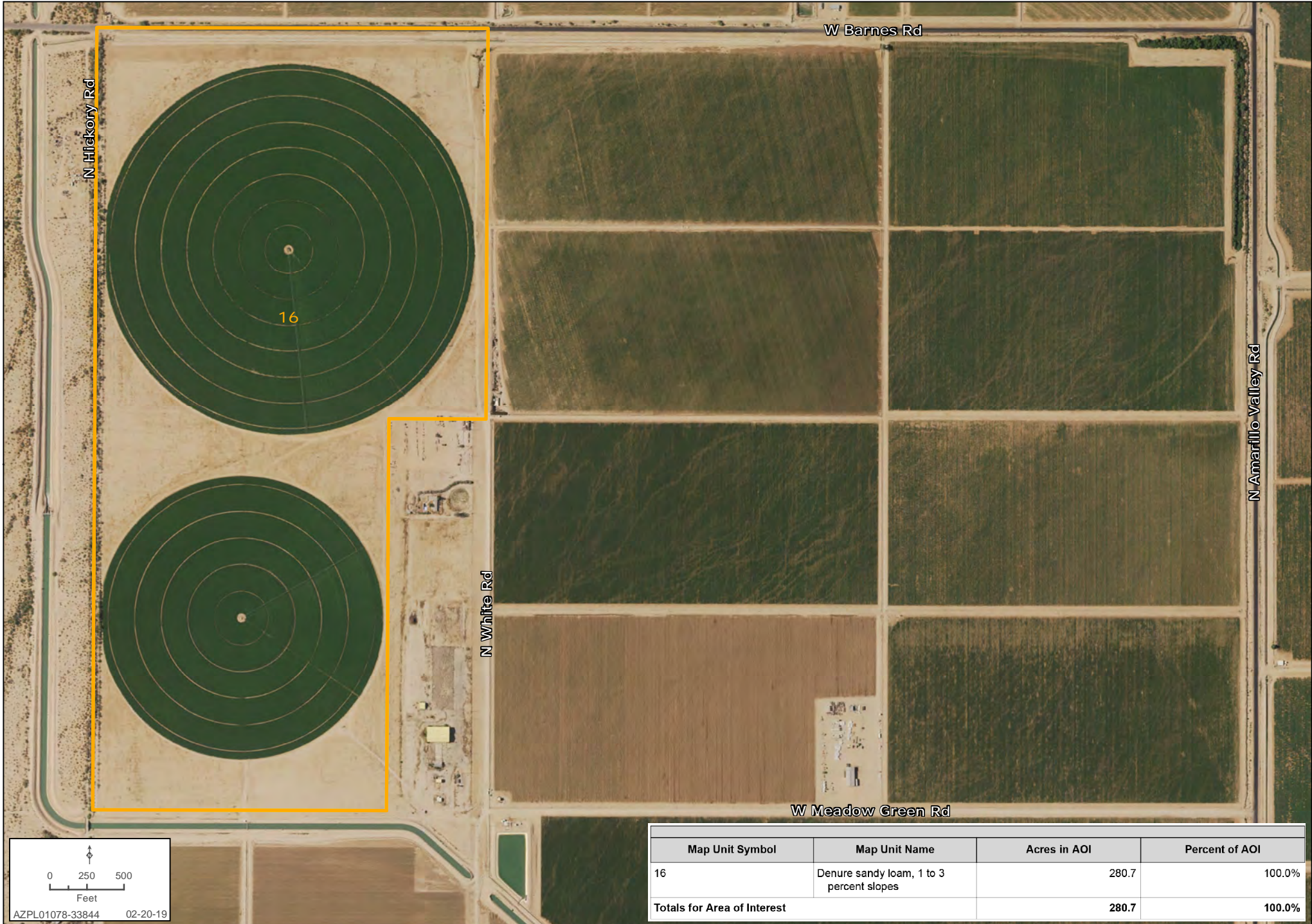
SURROUNDING DEVELOPMENTAL MAP

Bobby Wuertz | 480.483.8100 | www.landadvisors.com



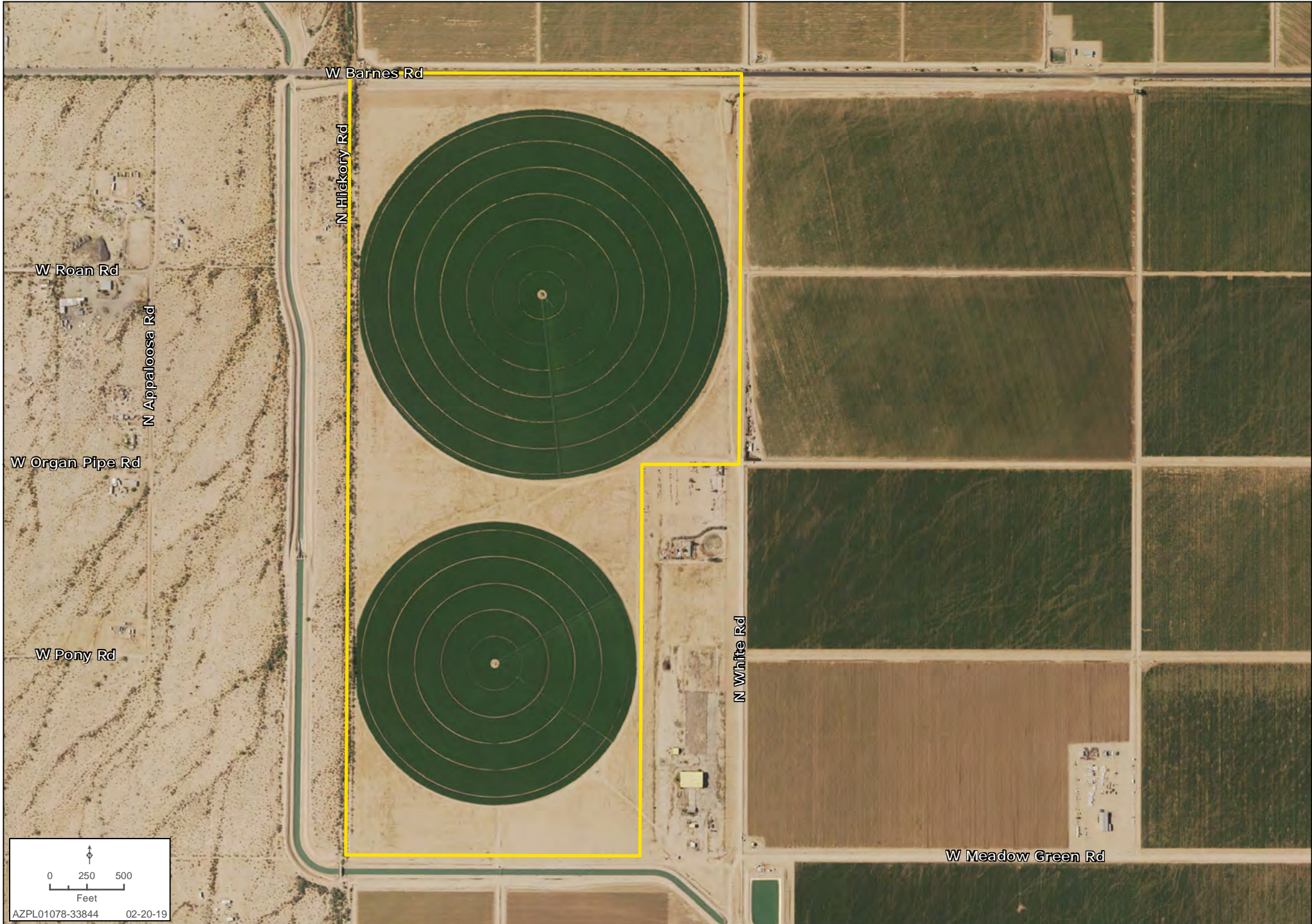
SOIL MAP

Bobby Wuertz | 480.483.8100 | www.landadvisors.com



DETAIL MAP

Bobby Wuertz | 480.483.8100 | www.landadvisors.com



PROPERTY PHOTOS

