

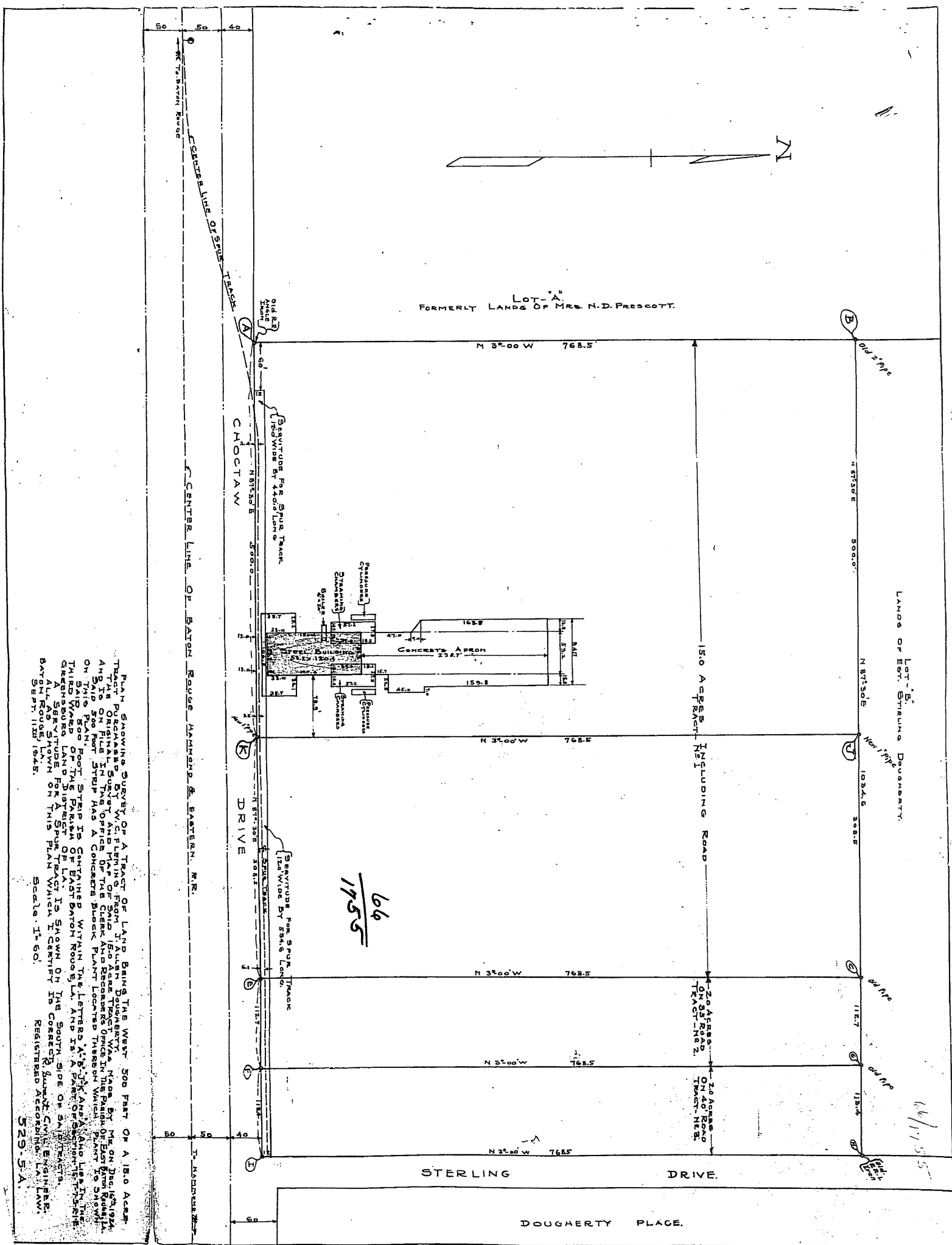
ORIGINAL

BUNDLE NUMBER

66

1755

MAP ATTACHED



66
1755

66/1755

PLAN SHOWING SURVEY OF A TRACT OF LAND BEING THE WEST 500 FEET OF A 1.80 ACRES TRACT PURCHASED BY W.C. FLEMING FROM J. ALLEN DOUGHERTY, BY ME ON Dec 15, 1924, AND IS SHOWN IN THE OFFICE OF THE CLERK AND RECORDS OFFICE IN THE PARISH OF EAST BATON ROUGE, LA. SAID 500 FOOT STRIP HAS A CONCRETE BLECK PLANT LOCATED THEREON WHICH PLANT IS SHOWN ON THIS PLAN. FOOT STRIP IS CONTAINED WITHIN THE LETTERS 'A', 'B', 'C', 'D', 'E', 'F', 'G', 'H', 'I', 'J', 'K', 'L', 'M', 'N', 'O', 'P', 'Q', 'R', 'S', 'T', 'U', 'V', 'W', 'X', 'Y', 'Z' AND IS A PART OF SECTION 15, T-53S, R-10E, EAST BATON ROUGE PARISH, LA. A SEWERAGE FOR A SPUR TRACK IS SHOWN ON THE SOUTH SIDE OF SAID STRIP. A SEWERAGE FOR A SPUR TRACK IS SHOWN IN THE CORNER OF SAID STRIP. REGISTERED ACCORDING TO LA. LAWS, SEPT. 11th 1945.

Scale: 1" = 50'

529.5 A.