



PREMIER
COMMERCIAL
PROPERTIES



Office Space for Lease

19230 Evans St NW, Elk River, MN 55330

PROPERTY DETAILS

- ◆ Professional office space, overlooking lake
- ◆ Highway 169 signage & visibility
- ◆ 39,100 vehicles per day (MNDOT 2019)
- ◆ Main entrance with several private entrances
- ◆ 59 marked surface stalls
- ◆ Elevator
- ◆ Suite 100 - 630sf - main floor, great location - 3 room suite on lower level overlooking the lake



PROPERTY DETAILS

LEASE RATE: \$11.00/SF
CAM/TAX: \$7.09/SF (2021)

FOR MORE INFORMATION, CONTACT

Marty Fisher/Mike Fisher
763.862.2005
mfisher@premiercommercialproperties.com
mikefisher@premiercommercialproperties.com



PREMIER
COMMERCIAL
PROPERTIES

Office Space for Lease

19230 Evans St NW | Elk River, MN | 55330

FOR MORE INFORMATION, CONTACT:

Marty





PREMIER
COMMERCIAL
PROPERTIES

Office Space for Lease

19230 Evans St NW | Elk River, MN | 55330

FOR MORE INFORMATION, CONTACT:

Marty Fisher | 763.862.2005 | mfisher@premiercommercialproperties.com



**Rear
entrances**



299 Coon Rapids Blvd NW | Coon Rapids, MN 55433 | www.premiercommercialproperties.com



PREMIER
COMMERCIAL
PROPERTIES

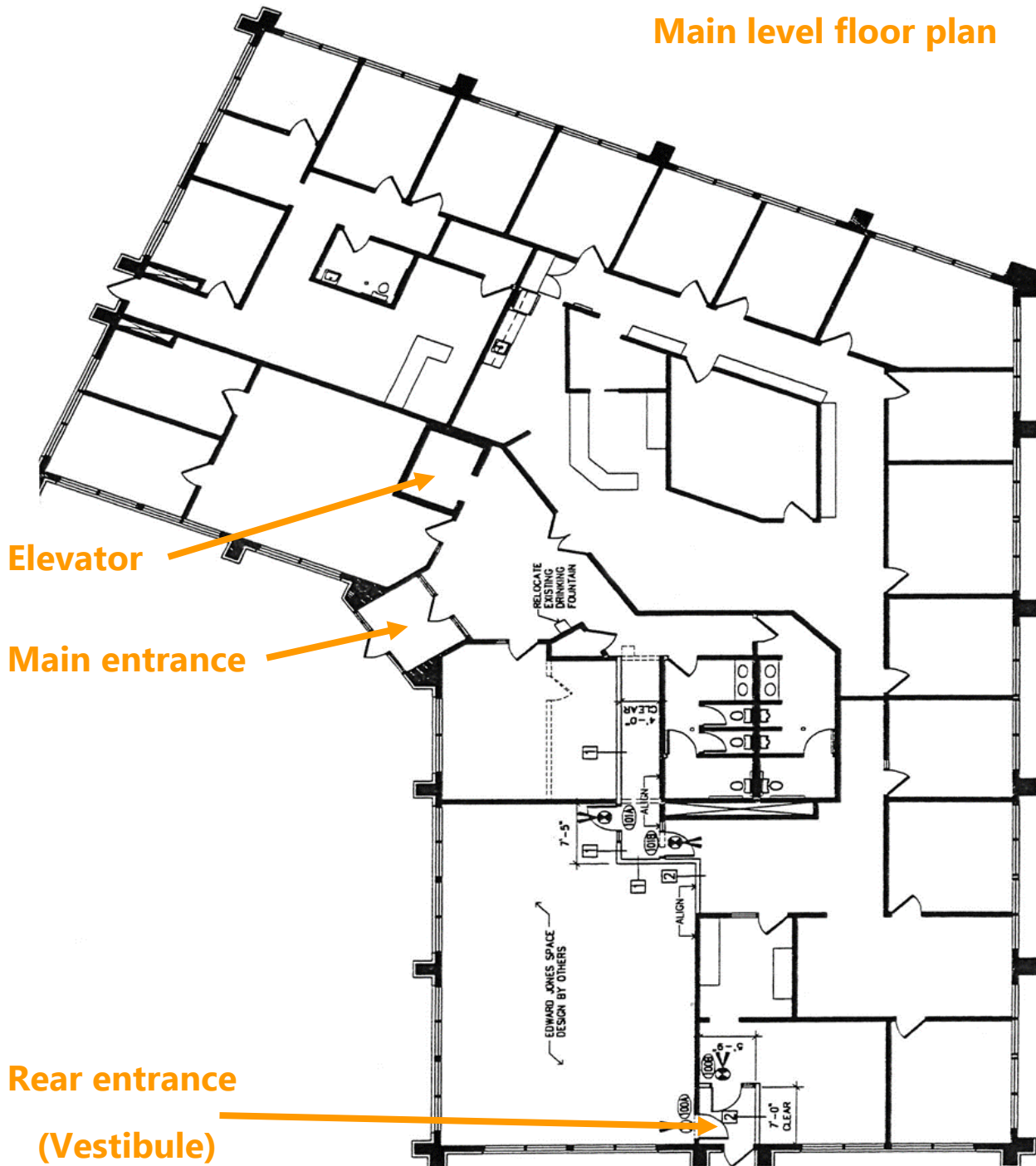
Office Space for Lease

19230 Evans St NW | Elk River, MN | 55330

FOR MORE INFORMATION, CONTACT:

Marty Fisher | 763.862.2005 | mfisher@premiercommercialproperties.com

Main level floor plan





PREMIER
COMMERCIAL
PROPERTIES

Office Space for Lease

19230 Evans St NW | Elk River, MN | 55330

FOR MORE INFORMATION, CONTACT:

Marty Fisher | 763.862.2005 | mfisher@premiercommercialproperties.com

