

# 10400

EATON PLACE  
FAIRFAX, VIRGINIA

# 1,000-7,843 RSF AVAILABLE NOW!



## BUILDING AMENITIES

- Four Move-in Ready Spec Suites with Kitchens scheduled for delivery January 2020
- Brand new tenant-only fitness center
- Brand new WiFi lounge and self-service vending with healthy snacks, lunches and beverages
- Free surface parking
- Onsite engineer and responsive management company
- Competitive rental rates
- Significant building renovations
- Storage available to tenants

## LOCATION AMENITIES

- Immediate access to I-66 and 123 (Chain Bridge Road)
- Convenient to Fairfax City Courthouse and Fairfax Government Center
- Walking distance to Fairfax Shopping Center - small shop retail buildings planned to open March 2020; anchor grocer (name withheld) set to open April 2020 -- See architectural renderings on page 2
- Next door to Best Western hotel



## CONTACT INFORMATION

Larry FitzGerald  
lfitzgerald@ngkf.com  
703-918-0221

Cole Spalding  
cspalding@ngkf.com  
703-918-0230

1410 Spring Hill Road, Suite 600, McLean, VA 22102



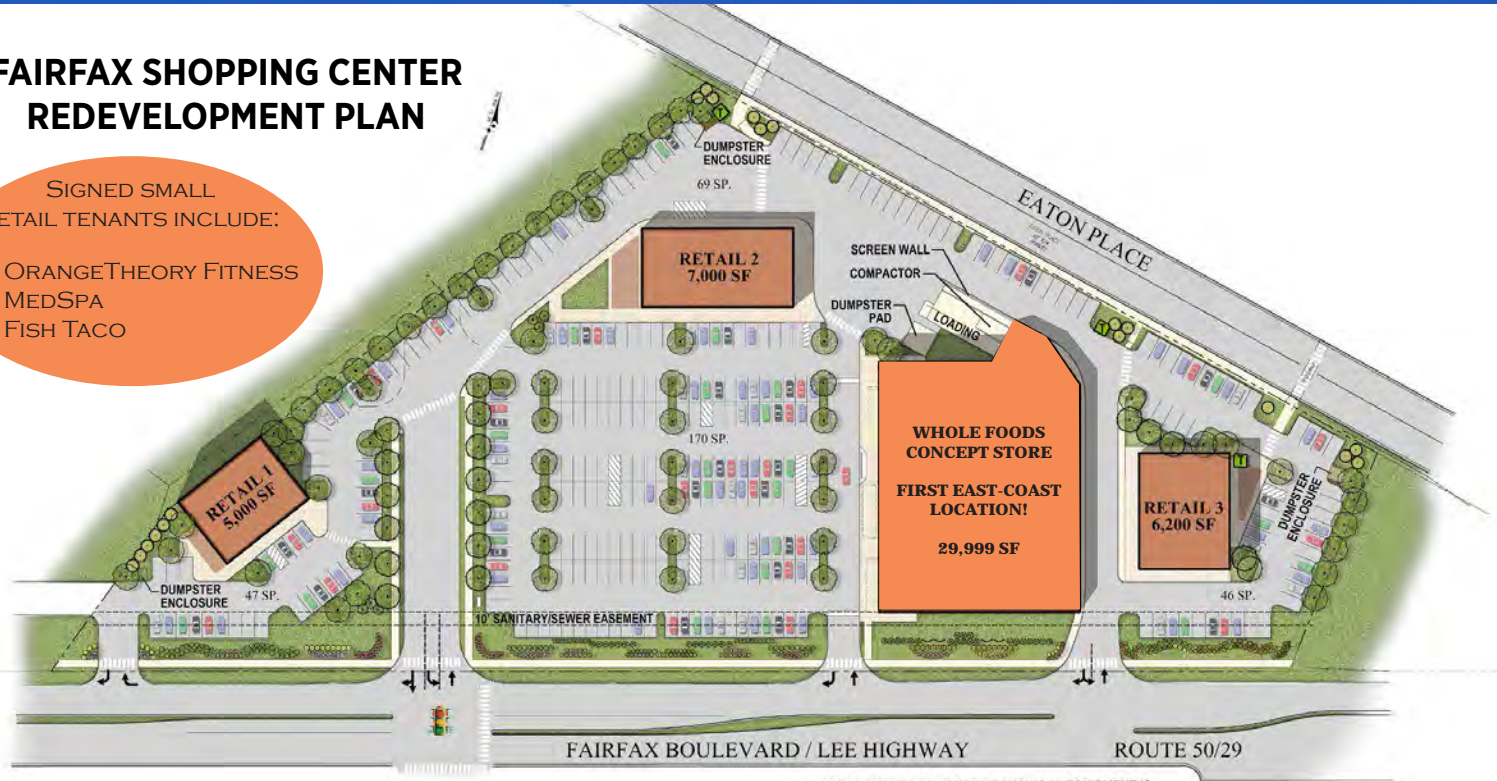


# 10400 EATON PLACE FAIRFAX, VIRGINIA

## FAIRFAX SHOPPING CENTER REDEVELOPMENT PLAN

SIGNED SMALL  
RETAIL TENANTS INCLUDE:

- ORANGETHEORY FITNESS
- MEDSPA
- FISH TACO



NOTE: EXCEPT AS NOTED MECHANICAL EQUIPMENT IS TO BE LOCATED ON THE BUILDING ROOF AND OBSCURED BY THE BUILDING PARAPET.



ARCHITECTURAL  
RENDERING



### CONTACT INFORMATION

Larry FitzGerald  
lfitzgerald@ngkf.com  
703-918-0221

Cole Spalding  
cspalding@ngkf.com  
703-918-0230

1410 Spring Hill Road, Suite 600, McLean, VA 22102

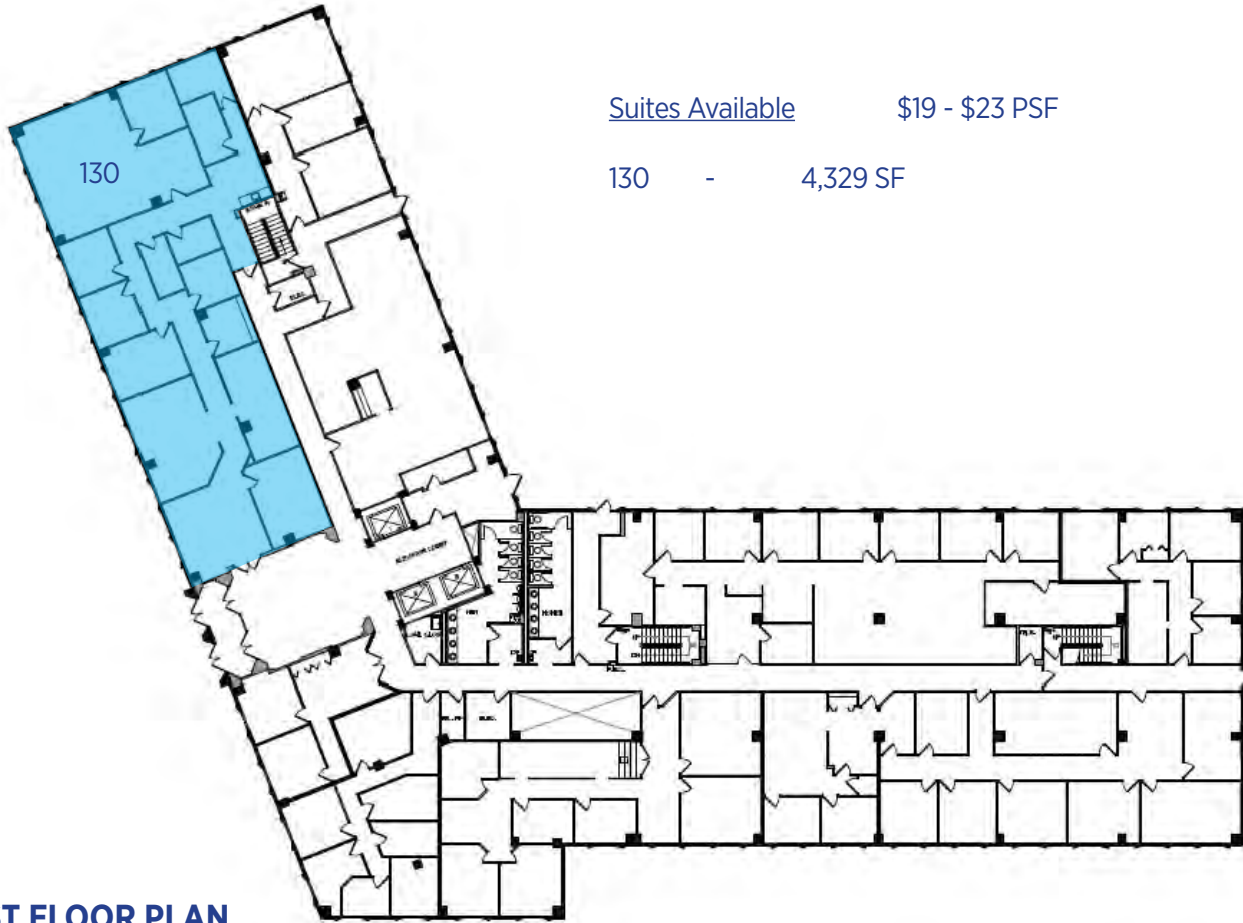




# 10400

## EATON PLACE

FAIRFAX, VIRGINIA



Suites Available      \$19 - \$23 PSF

130      -      4,329 SF

1ST FLOOR PLAN



### CONTACT INFORMATION

Larry FitzGerald      Cole Spalding  
lfitzgerald@ngkf.com      cspalding@ngkf.com  
703-918-0221      703-918-0230  
1410 Spring Hill Road, Suite 600, McLean, VA 22102

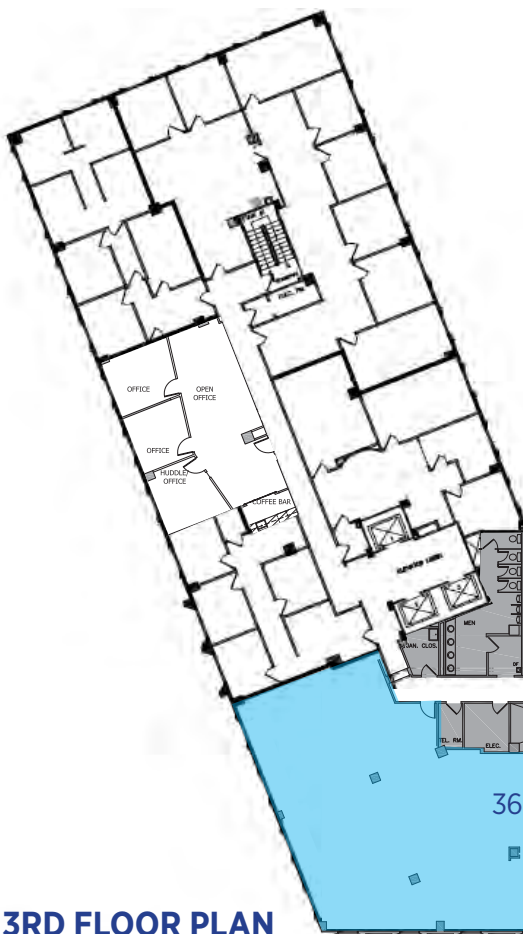




# 10400

## EATON PLACE

FAIRFAX, VIRGINIA

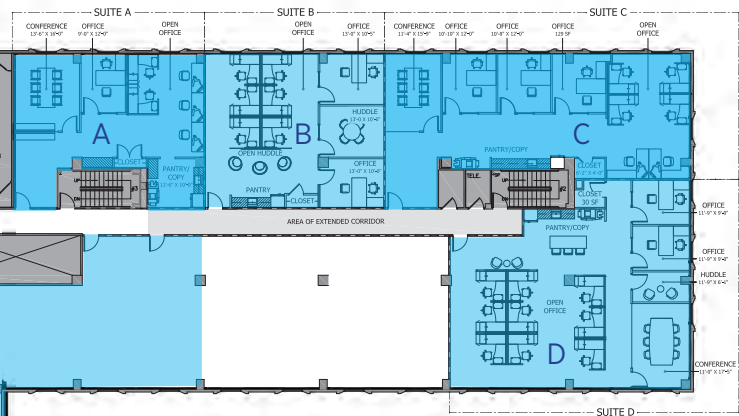


### Suites Available

\$19 - \$23 PSF

350A	-	1,460 SF	Spec Suite
350B	-	1,367 SF	Spec Suite
350C	-	1,919 SF	Spec Suite
350D	-	2,181 SF	Spec Suite
360*		approx. 1,000 - 6,713 SF	

\* 7,843 contiguous SF



**3RD FLOOR PLAN**



### CONTACT INFORMATION

Larry FitzGerald      Cole Spalding  
 lfitzgerald@ngkf.com      cspalding@ngkf.com  
 703-918-0221      703-918-0230  
 1410 Spring Hill Road, Suite 600, McLean, VA 22102





# 10400

## EATON PLACE

FAIRFAX, VIRGINIA



Suite Available      \$19 - \$23 PSF

520      -      1,500 - 5,740 SF

5TH FLOOR PLAN



### CONTACT INFORMATION

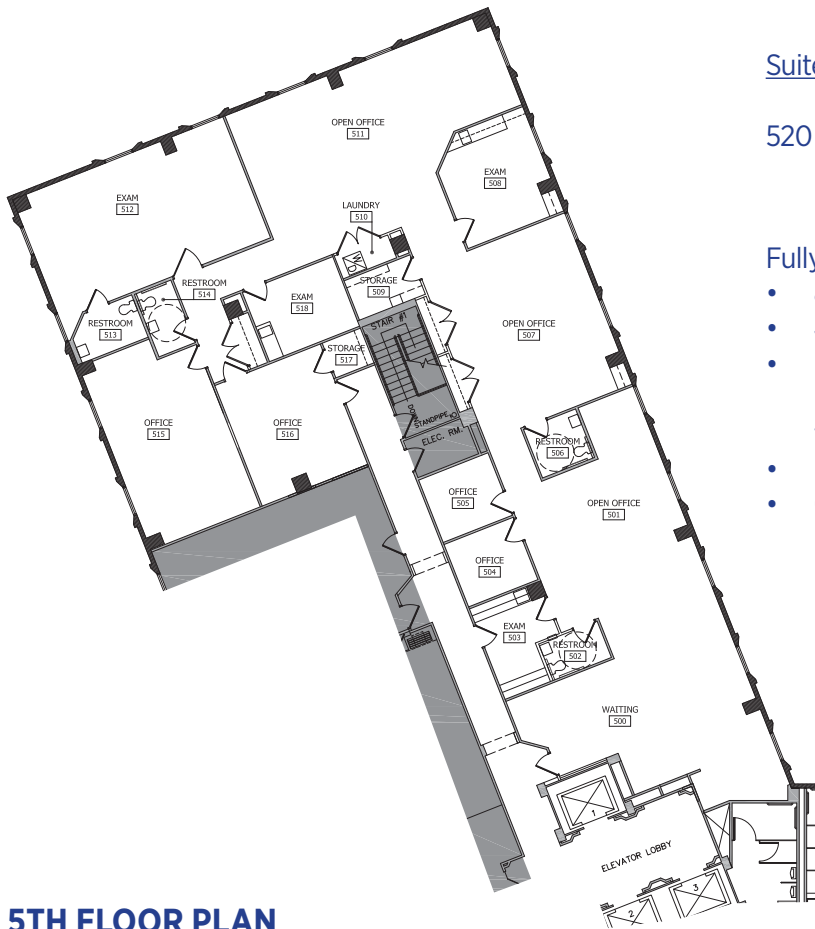
Larry FitzGerald      Cole Spalding  
lfitzgerald@ngkf.com      cspalding@ngkf.com  
703-918-0221      703-918-0230  
1410 Spring Hill Road, Suite 600, McLean, VA 22102



# 10400

## EATON PLACE

FAIRFAX, VIRGINIA



**5TH FLOOR PLAN**

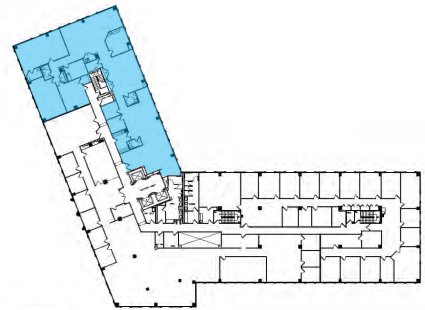
Suite Available

\$23.00 PSF

520 - 5,740 SF

Fully-Plumbed Medical Suite on Top Floor

- 8 office/exam rooms (3 with sinks)
- 4 restrooms
- Existing washer/dryer area with plumbing connection, dedicated outlet, venting, and hot water heater
- Private rear entrance/exit for staff
- Competitive rental rate in great location



**CONTACT INFORMATION**

Larry FitzGerald  
lfitzgerald@ngkf.com  
703-918-0221

Cole Spalding  
cspalding@ngkf.com  
703-918-0230

1410 Spring Hill Road, Suite 600, McLean, VA 22102

