



Corner of Hampton and Wayne Streets

Columbia, South Carolina

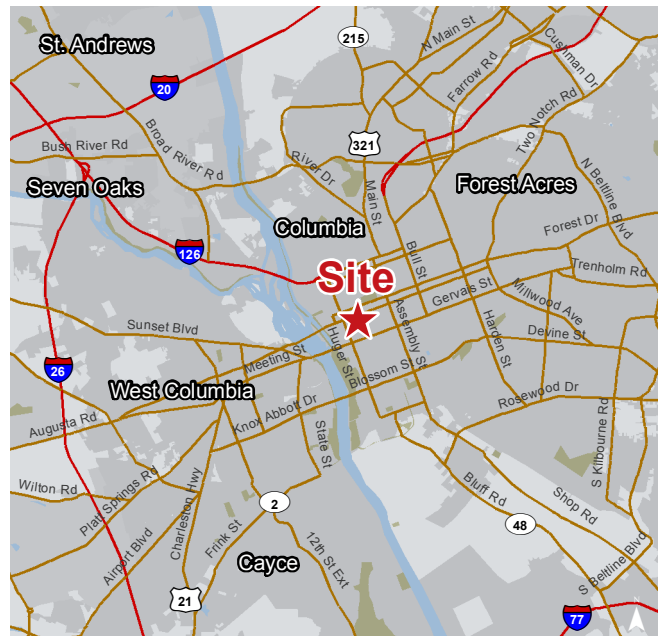
Property Features

- ±1.8 acres for sale in the Columbia Business District
- Corner location
- PUD zoning allows for 35-40 residential units
- Possible rezone to office or hospitality
- Traffic Counts: 9,500 VPD (Station 219)
- Walk to Vista Restaurant/Entertainment District
- Sales price: \$500,000

For more information: **Mac Fanning**

+1 803 744 9840

mfanning@naiavant.com



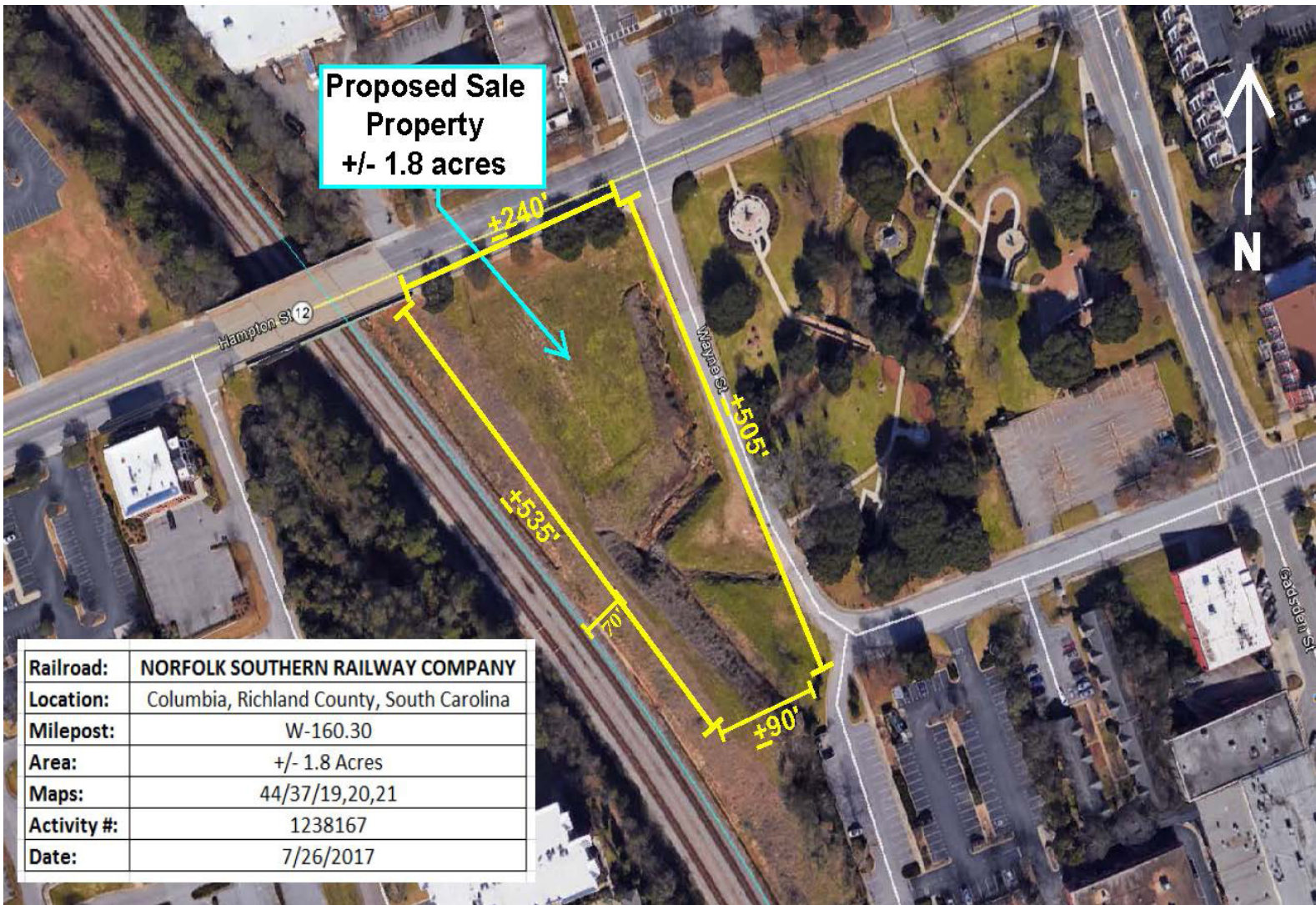
For Sale

±1.8 Acres

Vacant Land

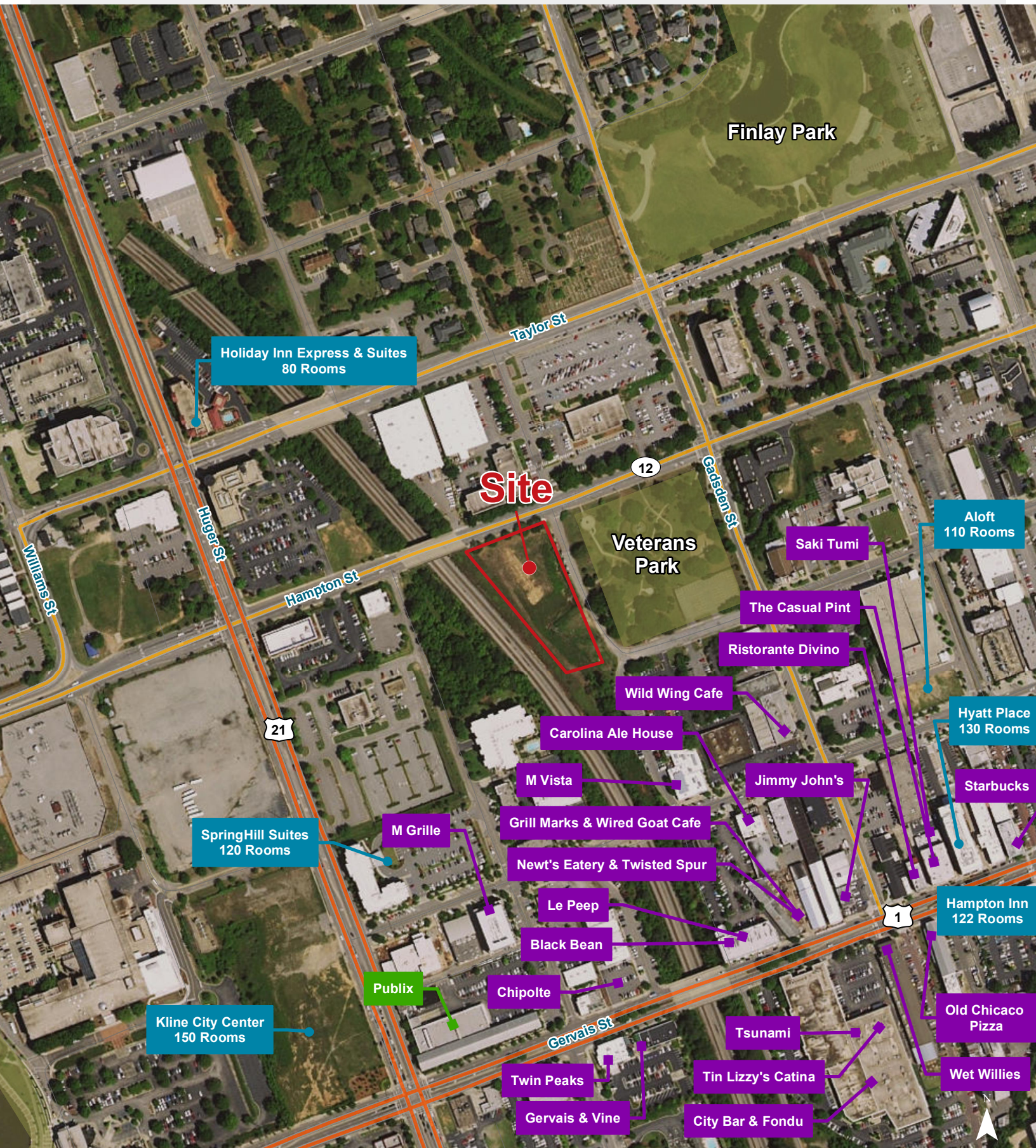
Overview and Site Dimensions

Corner of Hampton and Wayne Street - Columbia, South Carolina



THE INFORMATION CONTAINED HEREIN HAS BEEN GIVEN TO US BY THE OWNER OF THE PROPERTY OR OTHER SOURCES WE DEEM RELIABLE. WE HAVE NO REASON TO DOUBT ITS ACCURACY, BUT WE DO NOT GUARANTEE IT. ALL INFORMATION SHOULD BE VERIFIED PRIOR TO PURCHASE OR LEASE.

807 Gervais Street, Suite 301
Columbia, South Carolina 29201
+1 803.254.0100
www.naiavant.com



Map Updated: Tuesday, August 08, 2017. This information submitted is not guaranteed. Although obtained from reliable sources, all information should be confirmed prior to use or reliance upon the information. This document may not be reproduced in whole or in part without the express written consent of NAI Avant.

Demographic Profile

Hampton Street and Wayne Street - Columbia, South Carolina

	1 Mile	3 Miles	5 Miles		1 Mile	3 Miles	5 Miles
Population				Median Household Income			
2011 Census	4,635	77,046	157,836	2017 Estimate	\$39,989	\$35,597	\$39,537
2017 Estimate	4,908	82,275	167,773	2022 Projection	\$52,349	\$40,487	\$45,459
2022 Projection	5,181	86,447	175,710	Average Household Income			
% Chg. 2017-2022	5.6%	5.1%	4.7%	2017 Estimate	\$64,600	\$55,855	\$59,837
Households				2022 Projection	\$79,063	\$64,295	\$68,184
2011 Census	2,183	31,804	67,422	Per Capita Household Income			
2017 Estimate	2,408	34,269	71,848	2017 Estimate	\$34,157	\$24,955	\$26,579
2022 Projection	2,566	36,199	75,390	2022 Projection	\$41,052	\$28,538	\$30,170
Families				2017 Household Income Dist.			
2011 Census	549	13,184	32,467	Less than \$15,000	18.9%	22.6%	18.6%
2017 Estimate	572	13,702	33,598	\$15,000 - \$24,999	14.0%	14.1%	13.6%
2022 Projection	596	14,248	34,794	\$25,000 - \$34,999	12.5%	12.6%	12.2%
2017 Age Distribution				\$35,000 - \$49,999	11.3%	13.8%	14.9%
0 - 4	2.6%	5.4%	6.0%	\$50,000 - \$74,999	15.4%	15.2%	16.4%
5 - 9	1.5%	4.0%	4.8%	\$75,000 - \$99,999	10.4%	8.3%	9.5%
10 - 14	1.3%	3.5%	4.3%	\$100,000 - \$149,999	7.9%	7.9%	8.7%
15 - 19	8.7%	11.8%	9.0%	\$150,000 - \$199,999	4.9%	2.6%	2.9%
20 - 24	24.7%	19.6%	15.2%	\$200,000 and Up	4.6%	3.0%	3.3%
25 - 34	23.3%	16.4%	15.5%	2017 Dist. by Race & Ethnicity			
35 - 44	10.4%	9.5%	10.4%	White Alone	64.3%	53.4%	53.3%
45 - 54	11.1%	10.6%	12.0%	Black Alone	26.9%	38.7%	39.5%
55 - 64	10.1%	9.3%	10.6%	American Indian Alone	0.3%	0.3%	0.3%
65 - 74	3.5%	4.7%	5.9%	Asian Alone	5.1%	2.6%	2.1%
75 - 84	1.8%	3.4%	4.2%	Pacific Islander Alone	0.0%	0.1%	0.1%
85+	0.9%	2.0%	2.1%	Some Other Race Alone	1.0%	2.8%	2.8%
Median Age				Two or More Races	2.5%	2.1%	2.0%
2011 Census	28.7	27.9	31.2	Hispanic Origin (Any Race)	3.4%	5.5%	5.4%
2017 Estimate	29.4	28.9	32.7	2017 Housing Data			
2022 Projection	30.1	29.6	33.7	Owner Occ. Housing Units	678	12,929	33,348
Average Household Size				Renter Occ. Housing Units	1,729	21,339	38,500
2011 Census	1.71	2.09	2.17	2017 Business Data			
2017 Estimate	1.68	2.10	2.17	Total Businesses:	2,215	5,915	9,352
2022 Projection	1.69	2.10	2.18	Total Employees:	39,803	96,837	145,789