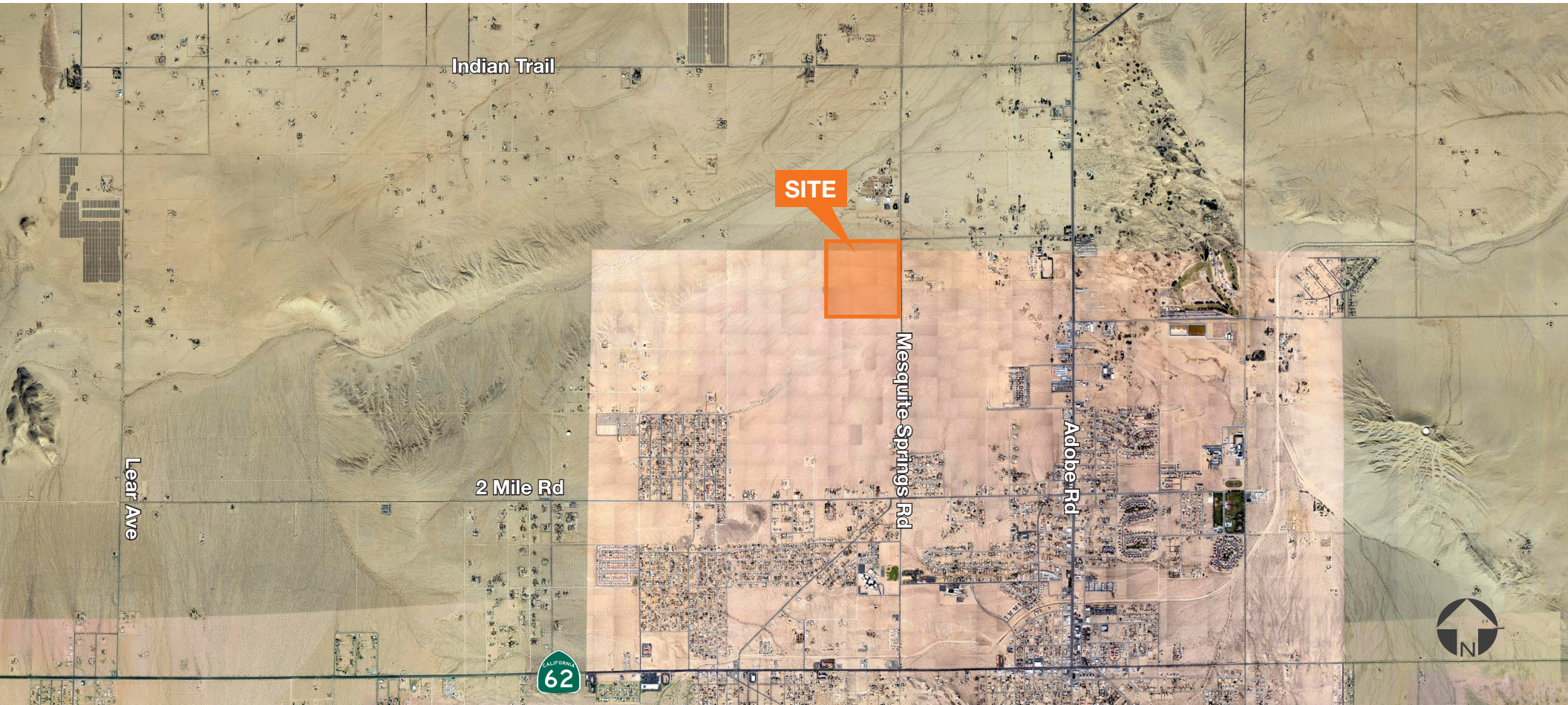


# 160 Acres SW Corner of Mesquite Springs Rd & Raymond Dr

Twentynine Palms, CA



**FOR SALE  
OR LEASE**

Site Located North of Joshua Tree  
National Park in Twentynine Palms

**LR Sanders**

Senior Vice President

☎ 858.369.3078 | ☎ 949.632.4077

lrs@kiddermathews.com

LIC #00480272

[kiddermathews.com](http://kiddermathews.com)

**km** Kidder  
Mathews

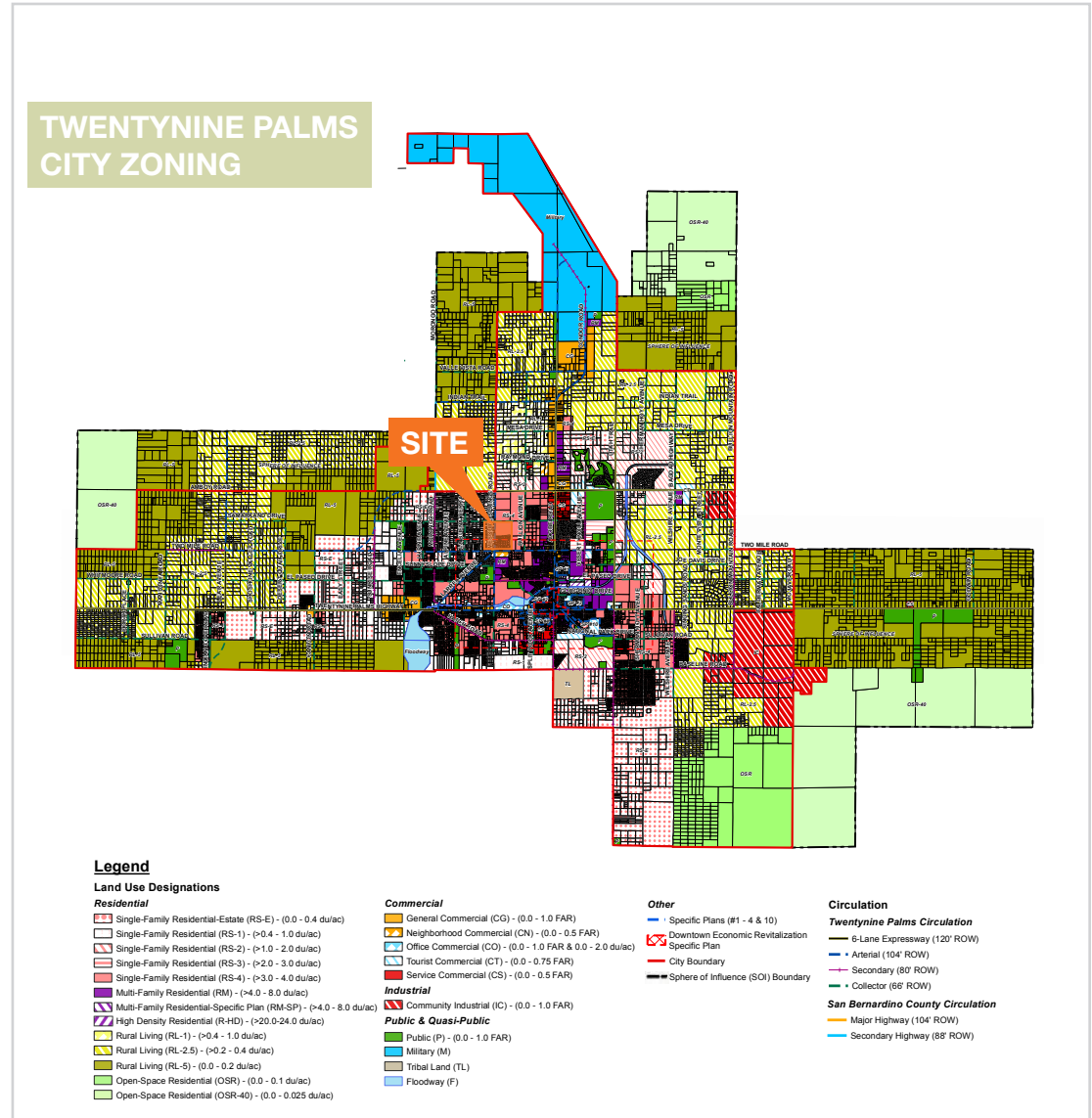


# 160 Acres SW Corner of Mesquite Springs Rd & Raymond Dr

Twentynine Palms, CA

## Features

<b>AVAILABLE</b>	160 acres
<b>USE</b>	Solar development site
<b>ACCESSIBILITY</b>	Twentynine Palms Highway, located on the west side of Mesquite Springs Rd, between Indian Trail and Two Mile Rd
<b>APN</b>	0620-021-01
<b>SALE PRICE</b>	\$425,000
<b>LEASE RATE</b>	\$800/AC/year



**LR Sanders**  
 Senior Vice President  
 O 858.369.3078 | C 949.632.4077  
 lrs@kiddermathews.com  
 LIC #00480272

[kiddermathews.com](http://kiddermathews.com)

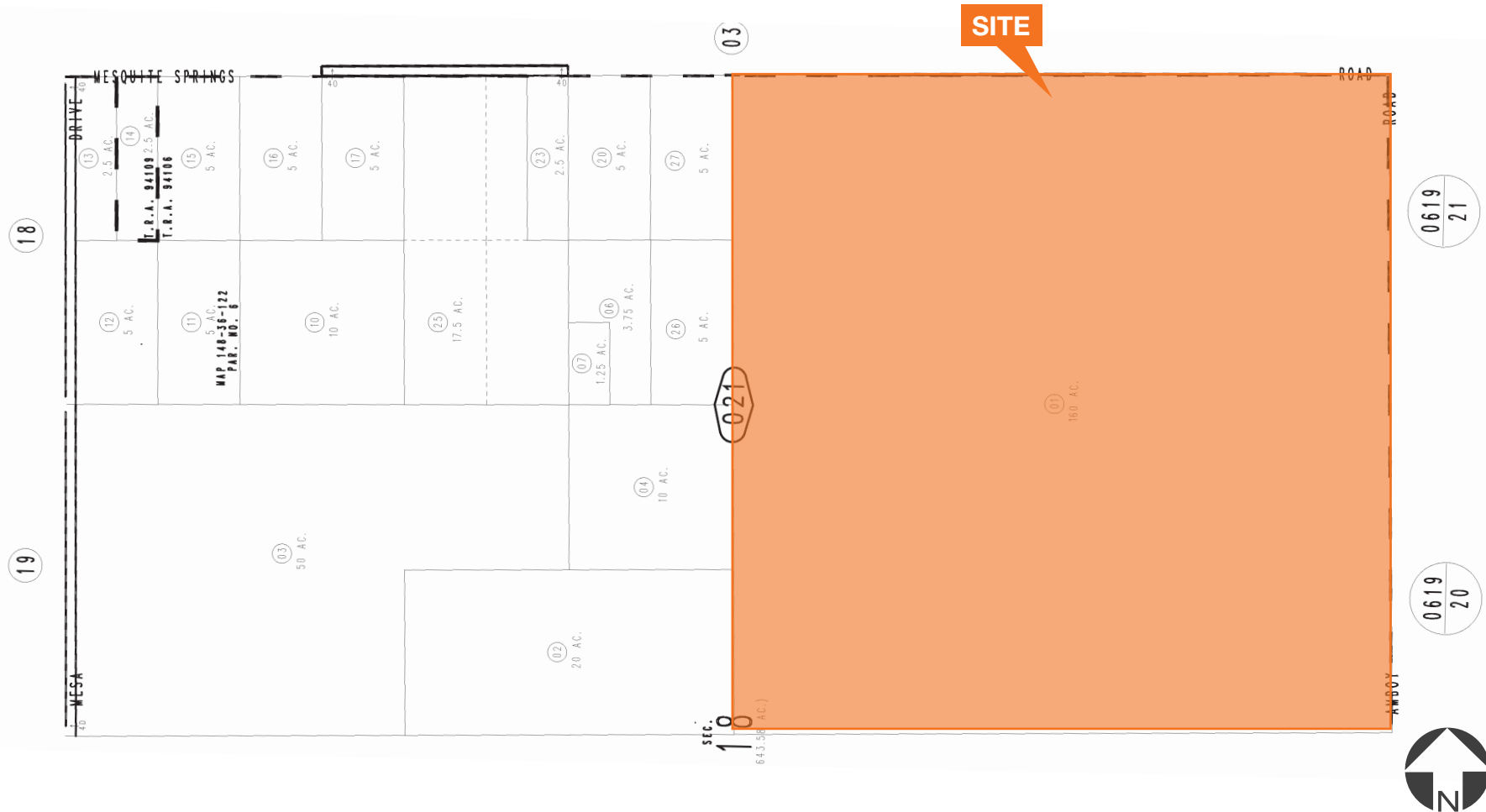


This information supplied herein is from sources we deem reliable. It is provided without any representation, warranty or guarantee, expressed or implied as to its accuracy. Prospective Buyer or Tenant should conduct an independent investigation and verification of all matters deemed to be material, including, but not limited to, statements of income and expenses. Consult your attorney, accountant, or other professional advisor.

# 160 Acres SW Corner of Mesquite Springs Rd & Raymond Dr

Twentynine Palms, CA

## Parcel Map



### LR Sanders

Senior Vice President

858.369.3078 | 949.632.4077

lrs@kiddermathews.com

LIC #00480272

[kiddermathews.com](http://kiddermathews.com)



This information supplied herein is from sources we deem reliable. It is provided without any representation, warranty or guarantee, expressed or implied as to its accuracy. Prospective Buyer or Tenant should conduct an independent investigation and verification of all matters deemed to be material, including, but not limited to, statements of income and expenses. Consult your attorney, accountant, or other professional advisor.