

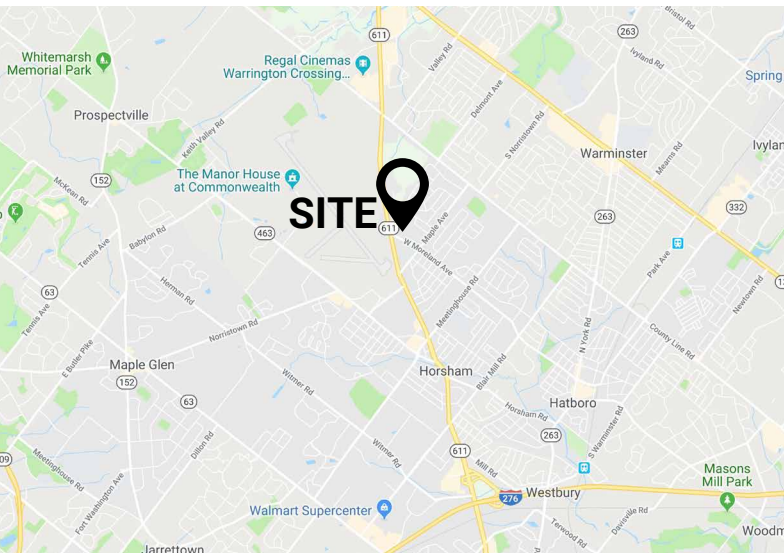
± 2.1 ACRES AT SIGNALIZED CORNER LOCATION

EASTON ROAD & MORELAND AVENUE, HORSHAM, PA 19044

FOR SALE:
\$1,700,000

PROPERTY FEATURES

- ✓ ± 2.1 Acres For Sale Next to a Coming Soon Freddy's Steakburgers at corner location
- ✓ Corner of Easton and Moreland will be signalized and currently in the process.
- ✓ Comes with a shared easement with Freddy's to access Easton Road.
- ✓ Variance applied to share a monument sign with Freddie's at the corner.
- ✓ Asking Price: \$1,700,000



CONTACT US

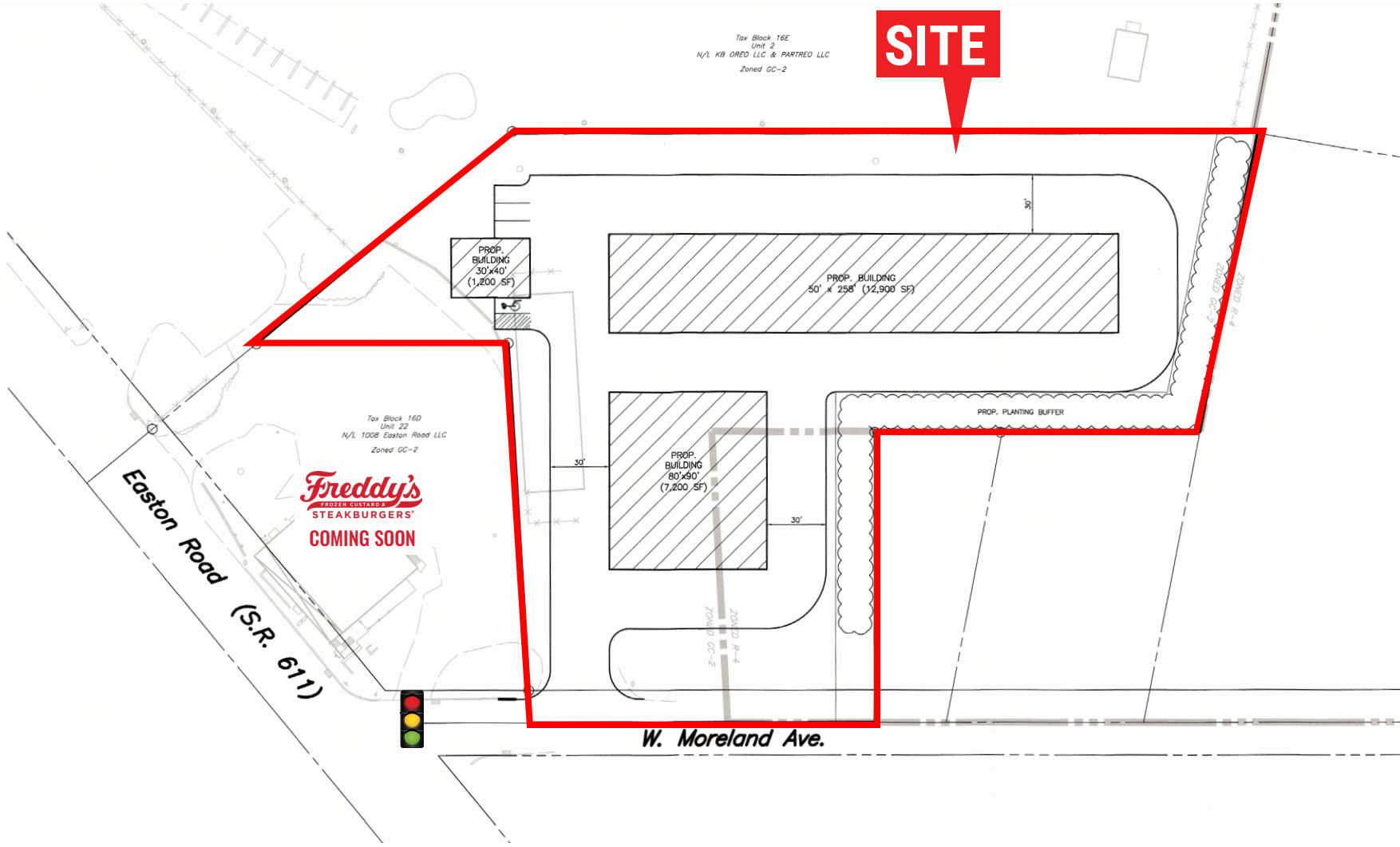
ZOMMICK MCMAHON
COMMERCIAL REAL ESTATE

RONALD CASEY
Phone: 610.359.1100
Cell: 610.764.5826
Email: rcasey@zmcre.com

STEVE DIBATTISTA
Phone: 610.359.1100
Cell: 610.368.2801
Email: sdibattista@zmcre.com

1306 Wilmington Pike, Suite A-2
West Chester, PA 19382
610.359.1100
www.zmcre.com

HORSHAM SKETCH PLAN - EASTON ROAD & MORELAND AVENUE



CONTACT US

RONALD CASEY
Phone: 610.359.1100
Cell: 610.764.5826
Email: rcasey@zmcre.com

STEVE DIBATTISTA
Phone: 610.359.1100
Cell: 610.368.2801
Email: sdibattista@zmcre.com

1306 Wilmington Pike, Suite A-2
West Chester, PA 19382
610.359.1100
www.zmcre.com

HORSHAM MARKET AERIAL - EASTON ROAD & MORELAND AVENUE



CONTACT US

RONALD CASEY
Phone: 610.359.1100
Cell: 610.764.5826
Email: rcasey@zmcre.com

STEVE DIBATTISTA
Phone: 610.359.1100
Cell: 610.368.2801
Email: sdibattista@zmcre.com

1306 Wilmington Pike, Suite A-2
West Chester, PA 19382
610.359.1100
www.zmcre.com

ABOUT ZOMMICK McMAHON COMMERCIAL REAL ESTATE

Zommick McMahon Commercial Real Estate, Inc. has been a Metro Philadelphia Area staple since its inception in 1949. The Company was founded by Joseph Zommick, and continues today with Ryan McMahon and his highly experienced staff, whom are all results-oriented professionals.

SOME OF OUR SATISFIED CLIENTS:



CONTACT US

RONALD CASEY
Phone: 610.359.1100
Cell: 610.764.5826
Email: rcasey@zmcre.com

STEVE DIBATTISTA
Phone: 610.359.1100
Cell: 610.368.2801
Email: sdibattista@zmcre.com

1306 Wilmington Pike, Suite A-2
West Chester, PA 19382
610.359.1100
www.zmcre.com