

2600 S EL CAMINO REAL

SAN MATEO, CA 94403

±7,870 OFFICE SPACE
Amazing Location in San Mateo!

CLICK TO VIEW
360° INTERACTIVE TOUR 



ARTISIT RENDERING



2600 S EL CAMINO REAL

SAN MATEO, CA 94403

PROPERTY HIGHLIGHTS:

- Steps away from restaurants & retail amenities on 25th Ave
- Easy freeway access via 92 to Hwy 101 & 280
- Complete exterior renovation planned
- Monument signage available
- Covered structured parking onsite
- Large rooftop terrace

Chris Blom

Senior Associate
+1 650 931 2210
chris.blom@cushwake.com
LIC #02031205

1350 Bayshore Hwy., Suite 900
Burlingame, CA
main +1 650 347 3700
fax +1 650 347 4307
cushmanwakefield.com

Andrew Guglielmi

SC Properties
+1 650 398 0281
andrew@scproppsm.com
LIC #01852584

ARTISIT RENDERING



2600 S EL CAMINO REAL

SAN MATEO, CA 94403

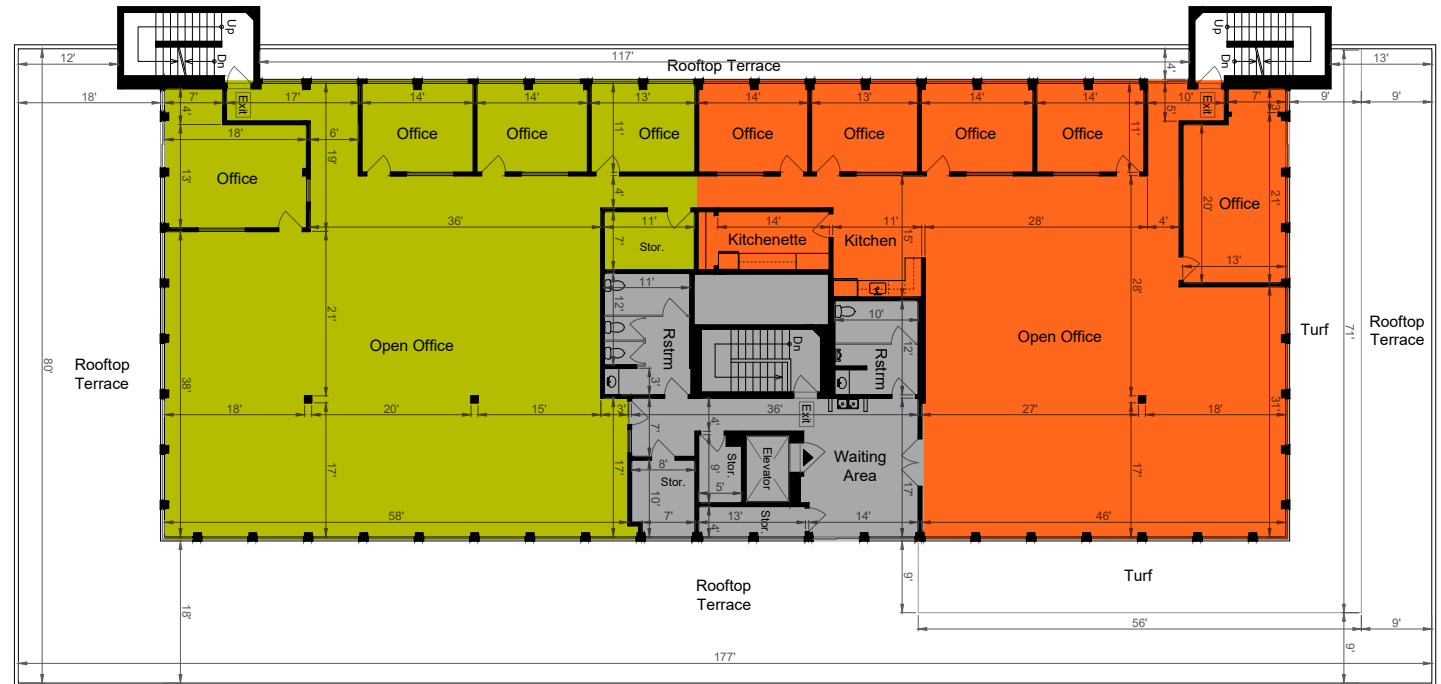
±7,870 OFFICE SPACE

Amazing Location in San Mateo!

UNIT 300

±7,870 SF

- 7,870 SF divisible to ±4,000 SF
- Mix of private office & open area
- Recently renovated break room
- Furniture available



Chris Blom
Senior Associate
+1 650 931 2210
chris.blom@cushwake.com
LIC #02031205

1350 Bayshore Hwy., Suite 900
Burlingame, CA
main +1 650 347 3700
fax +1 650 347 4307
cushmanwakefield.com

Andrew Guglielmi
SC Properties
+1 650 398 0281
andrew@scproppsm.com
LIC #01852584



AMENITIES:

RESTAURANTS

- 1 Patio Coffee Shop
KingKat
- 2 Spicy Empire
- 3 Kaori Sushi and Sake Bar
- 4 San Mateo Taqueria
- 5 La Lanterna
- 6 Velo City Pizza
The Noodle Shop
- 7 The Swingin' Door
- 8 Santa Ramen
- 9 Fieldwork Brewing Company
- 10 Blue Bottle Coffee
- 11 Chipotle Mexican Grill
The Habit Burger Grill
- 12 MidiCi The Neapolitan Pizza Company
Shake Shack
- 13 California Pizza Kitchen

GROCERY STORES

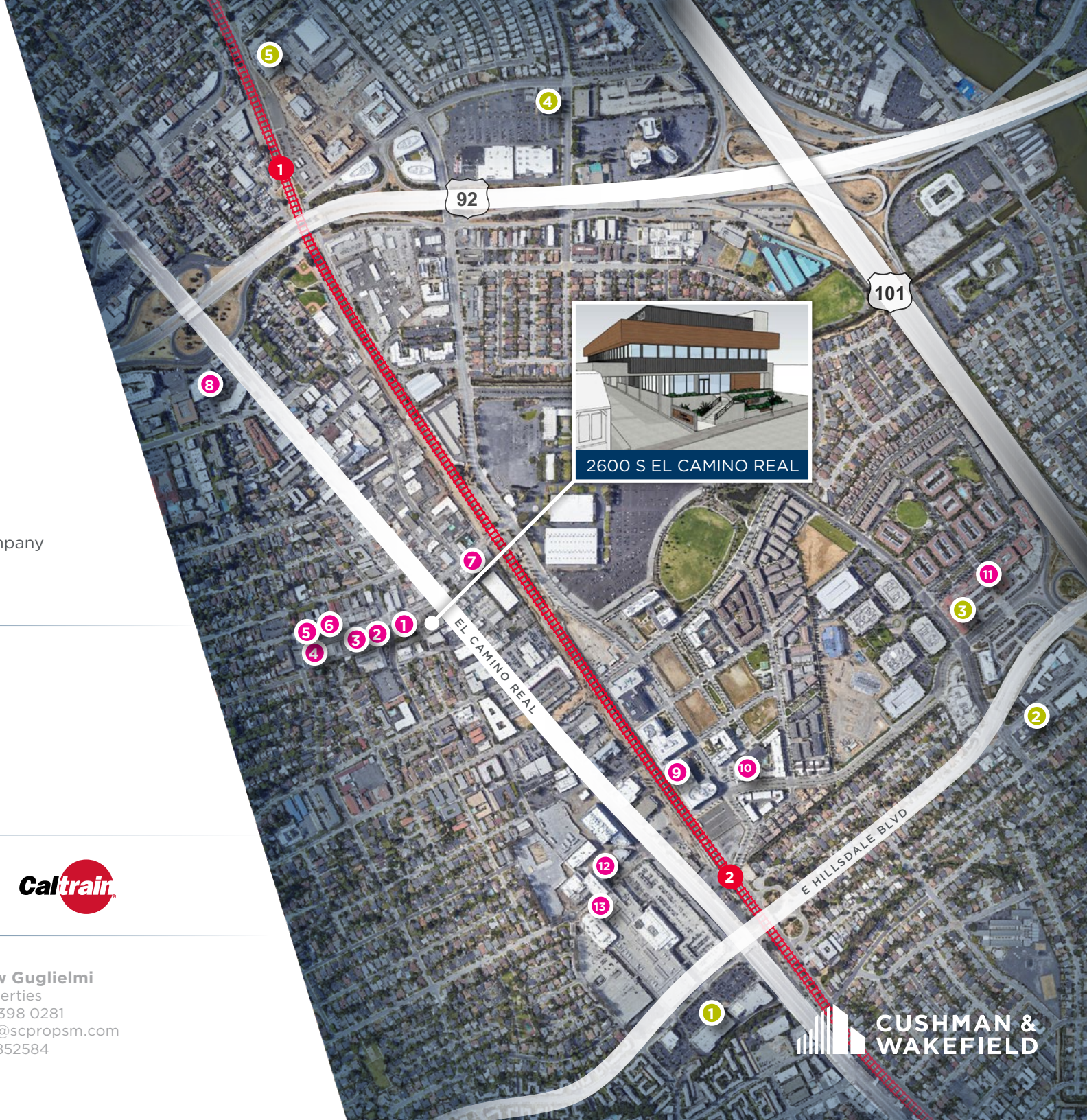
- 1 Trader Joe's
- 2 BevMo!
- 3 Whole Foods Market
- 4 Trader Joe's
- 5 Safeway

- 1 Hayward Park Caltrain Station
- 2 Hillsdale Caltrain Station



Chris Blom
Senior Associate
+1 650 931 2210
chris.blom@cushwake.com
LIC #02031205

Andrew Guglielmi
SC Properties
+1 650 398 0281
andrew@scprosm.com
LIC #01852584



2600 S EL CAMINO REAL

