



FOR LEASE

# Maplewood Medical/Professional Building

33915 1ST WAY SOUTH | FEDERAL WAY, WA



## Class "A" Office Space

**SUITE 130** 4,356 PSF

**HOSPITAL SYNERGY** located a block from Virginia Mason and less than a mile from the St. Francis Hospital Campus

**QUALITY** concrete structure building built in 2005

**RATE** \$16.00 PSF, NNN

**PLEASE JOIN TENANTS** Patricia Kho DDS, Retina Specialists, Washington Gastroenterology, Kids on 1st Dentistry, and Edward Jones

**WILL FRAME**

253.722.1412

[will.frame@kidder.com](mailto:will.frame@kidder.com)

**DREW FRAME**

253.722.1433

[drew.frame@kidder.com](mailto:drew.frame@kidder.com)

**KIDDER.COM**

This information supplied herein is from sources we deem reliable. It is provided without any representation, warranty, or guarantee, expressed or implied as to its accuracy. Prospective Buyer or Tenant should conduct an independent investigation and verification of all matters deemed to be material, including, but not limited to, statements of income and expenses. Consult your attorney, accountant, or other professional advisor.

**Kidder  
Mathews**

**FOR LEASE**

# Maplewood Medical/Professional Building

33915 1ST WAY SOUTH | FEDERAL WAY, WA



**WILL FRAME**  
253.722.1412  
[will.frame@kidder.com](mailto:will.frame@kidder.com)

**DREW FRAME**  
253.722.1433  
[drew.frame@kidder.com](mailto:drew.frame@kidder.com)

**KIDDER.COM**

This information supplied herein is from sources we deem reliable. It is provided without any representation, warranty, or guarantee, expressed or implied as to its accuracy. Prospective Buyer or Tenant should conduct an independent investigation and verification of all matters deemed to be material, including, but not limited to, statements of income and expenses. Consult your attorney, accountant, or other professional advisor.

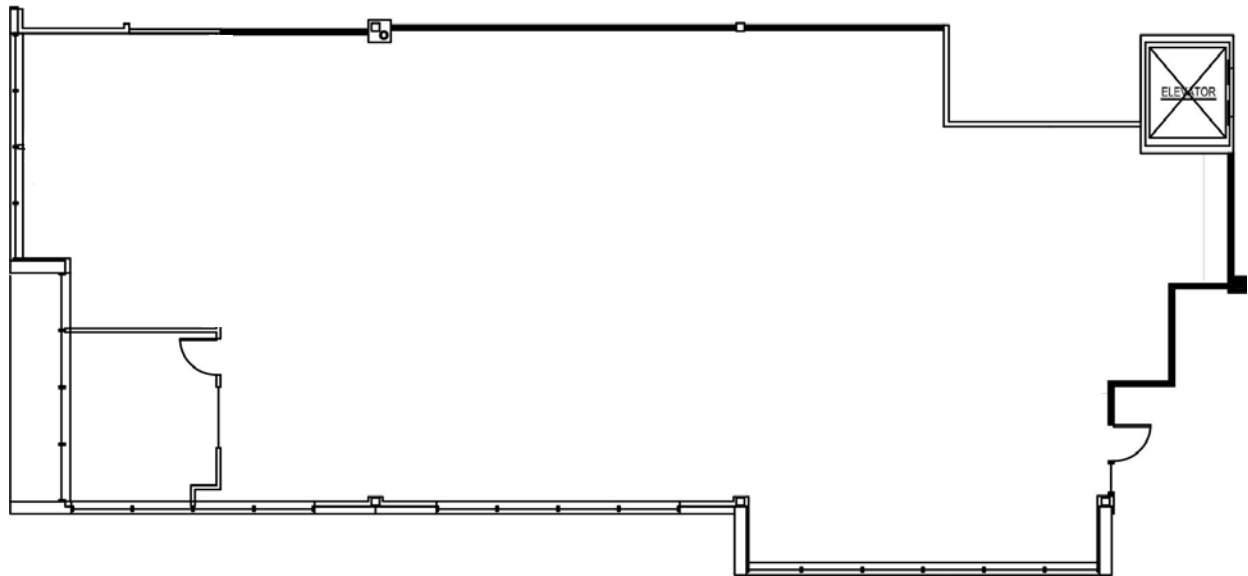


**FOR LEASE**

# Maplewood Medical/Professional Building

33915 1ST WAY SOUTH | FEDERAL WAY, WA

Suite 130 Approx. 4,356 RSF



**WILL FRAME**

253.722.1412

[will.frame@kidder.com](mailto:will.frame@kidder.com)

**DREW FRAME**

253.722.1433

[drew.frame@kidder.com](mailto:drew.frame@kidder.com)

**KIDDER.COM**

This information supplied herein is from sources we deem reliable. It is provided without any representation, warranty, or guarantee, expressed or implied as to its accuracy. Prospective Buyer or Tenant should conduct an independent investigation and verification of all matters deemed to be material, including, but not limited to, statements of income and expenses. Consult your attorney, accountant, or other professional advisor.

