



**OFFICE BUILDING FOR LEASE**

**1206 LASKIN ROAD**

VIRGINIA BEACH, VA 23451



# 1206 LASKIN ROAD

VIRGINIA BEACH, VA 23451

## PROPERTY OVERVIEW



### OFFERING SUMMARY

**Available SF:** 825 - 2,255 SF

**Lease Rate:** \$17.50 SF/yr (Full Service)

**Building Size:** 40,000 SF

### AVAILABLE SPACES

**SF**

Suite 111 825 SF

Suite 120 1,516 SF

Suite 150 2,255 SF

Suite 205 1,380 SF

Suite 251 1,738 SF

### PROPERTY OVERVIEW

40,000 square foot, two-story brick office building

### PROPERTY HIGHLIGHTS

- Conveniently located on Laskin Road at Birdneck Road
- Easy access to I-264
- Close proximity to Virginia Beach Oceanfront and NAS Oceana

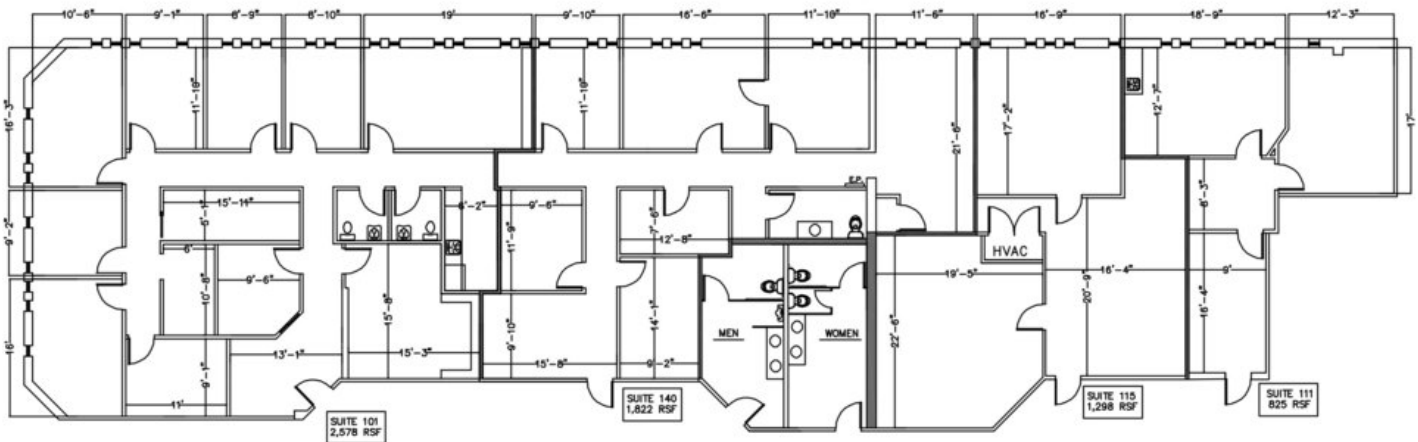
### DEMOGRAPHICS

	1 Mile	3 Miles	5 Miles
<b>Total Households:</b>	5,351	25,429	40,434
<b>Total Population:</b>	10,931	56,977	96,417
<b>Average HH Income:</b>	\$68,444	\$84,218	\$84,792

# 1206 LASKIN ROAD

VIRGINIA BEACH, VA 23451

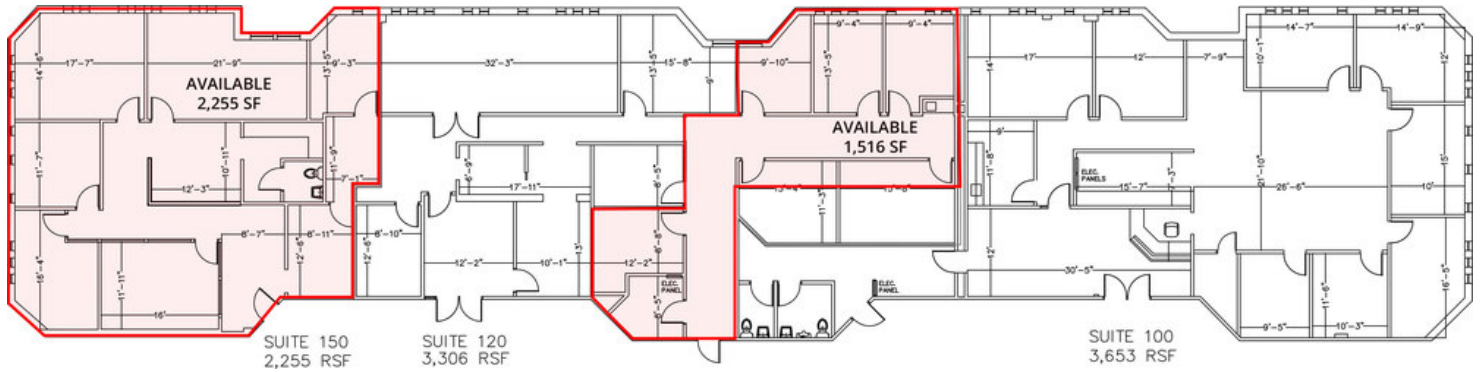
SUITE 111 | 825 SF



# 1206 LASKIN ROAD

VIRGINIA BEACH, VA 23451

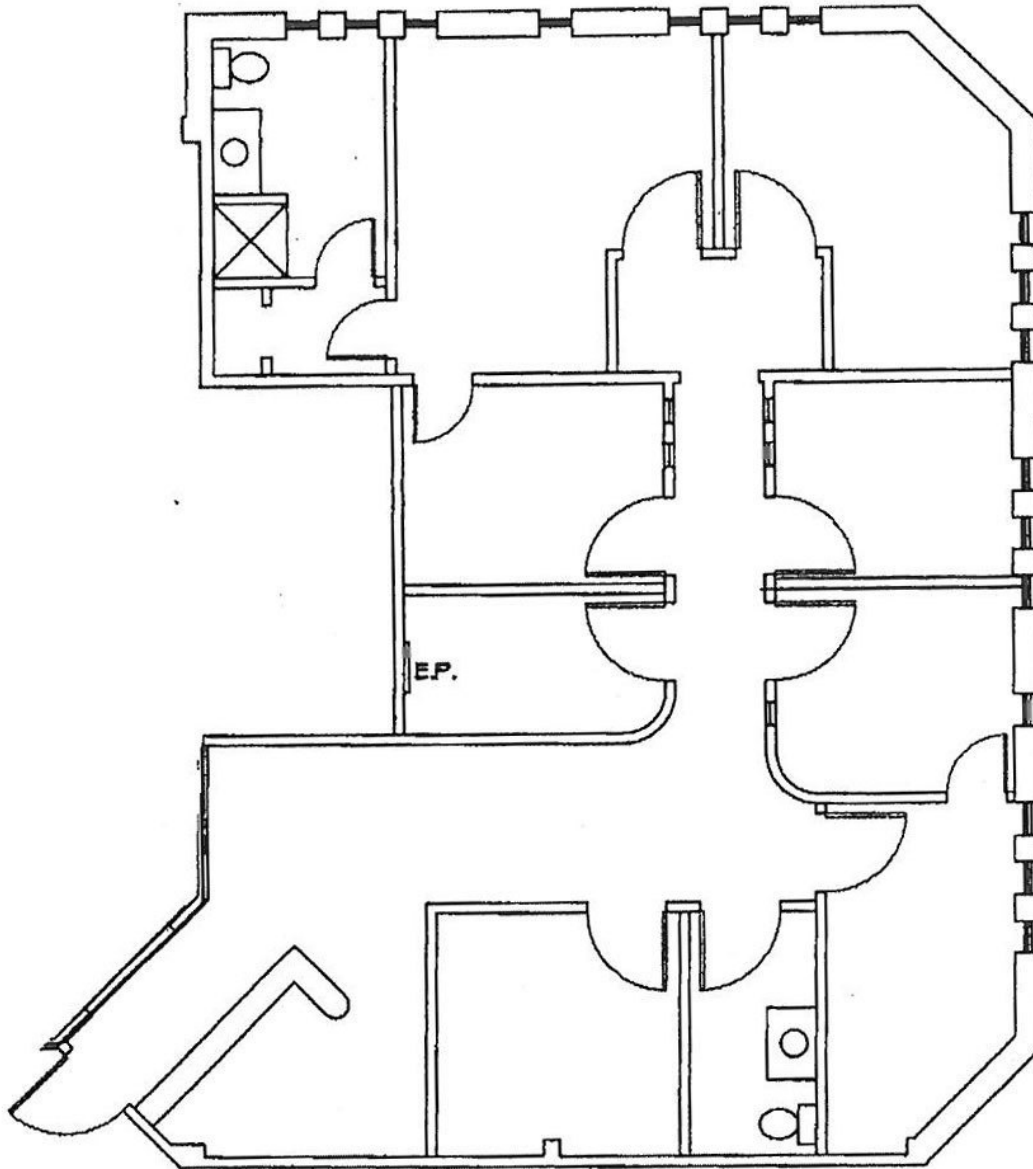
SUITE 120/150 | CAN BE SUBDIVIDED



# 1206 LASKIN ROAD

VIRGINIA BEACH, VA 23451

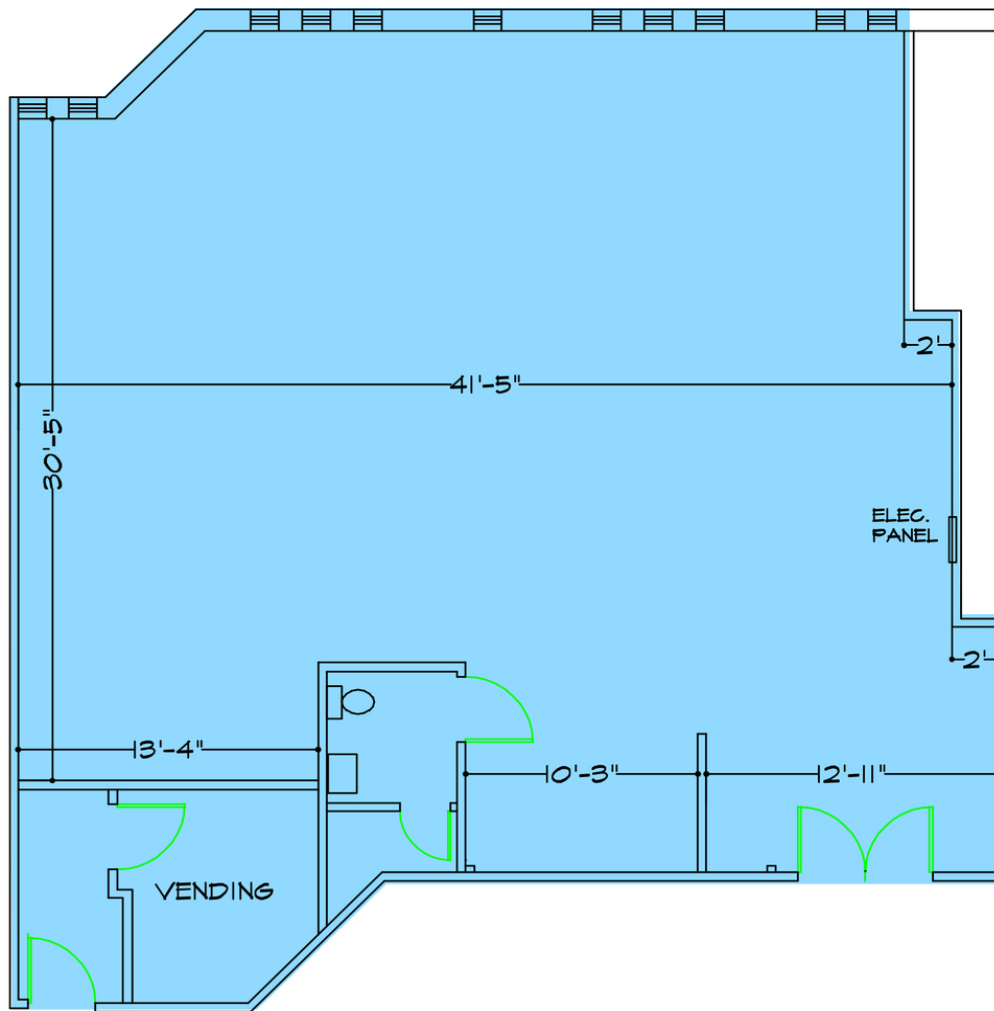
SUITE 205 | 1,380 SF



# 1206 LASKIN ROAD

VIRGINIA BEACH, VA 23451

SUITE 251 | 1,738 SF





**Vivian L. Turok**

Senior Vice President  
757.497.2113  
Vturok@divaris.com

**Elizabeth C. Paasch**

Assistant Vice President  
757.333.4322  
Epaasch@divaris.com



The information contained herein should be considered confidential and remains the sole property of Divaris Real Estate, Inc. at all times. Although every effort has been made to ensure accuracy, no liability will be accepted for any errors or omissions. Disclosure of any information contained herein is prohibited except with the express written permission of Divaris Real Estate, Inc.