

SECTION
STOCKADE FENCE ENCLOSURE
 @ DUMPSTER PAD

NOTE: EXIST ACCESS TO RITE 31 TO BE CLOSED TO REMOVE EXIST BRICKS FROM EXIST CONCRETE TYPE C&G TO MATCH EXIST, WITHIN ONE YEAR.

LEGEND

- EXIST. LIGHT POLE
- PROPOSED GRADE
- EXIST. CONTOUR
- PROPOSED CONTOUR
- RIM ELEVATION
- INVERT ELEVATION
- NEW CONCRETE WALK
- LOT LINE
- SILT FENCE
- NEW LIGHT POLE
- EXIST. FIRE HYDRANT
- EXIST. WATER MAIN
- EXIST. WATER SERVICE
- PROPOSED WATER SERVICE
- EXIST. SANITARY SEWER/FORCE MAIN
- PROPOSED SANITARY SEWER/FORCE MAIN
- PROPOSED STORM SEWER
- EXIST. POWER POLE
- CATCH BASIN
- MANHOLE
- NEW BITUMINOUS CONCRETE SURFACE
- ONE WAY TRAFFIC PATTERN
- DIRECTION ARROWS
- INLET

24 Hour Notice:
 The Contractor shall notify the North Shore Sanitary District at 847-423-4060 a minimum of 24 hours prior to the start of construction.

TV Note:
 All sanitary sewer enclosures shall be removed in the presence of North Shore Sanitary District personnel after having notified the District at 847-423-4060 a minimum of 24 hours prior to removing. A copy of the pipe in VHS format is to be submitted to the District for approval.

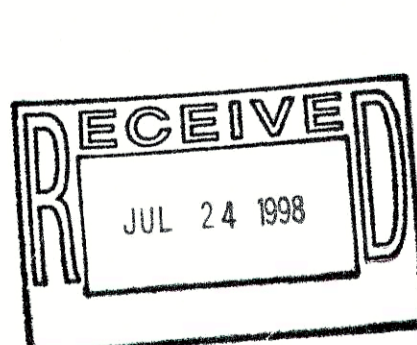
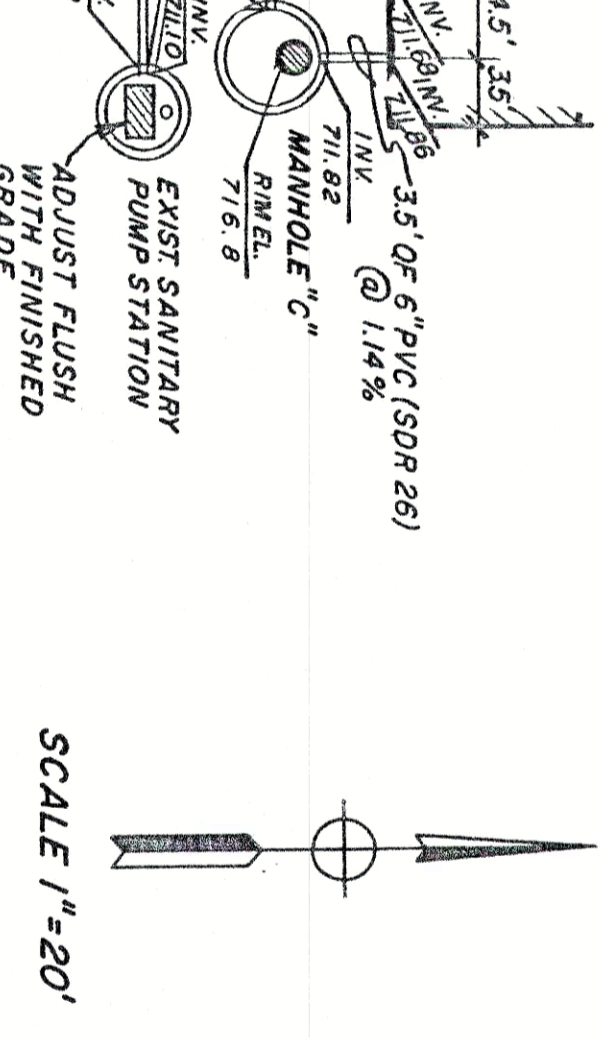
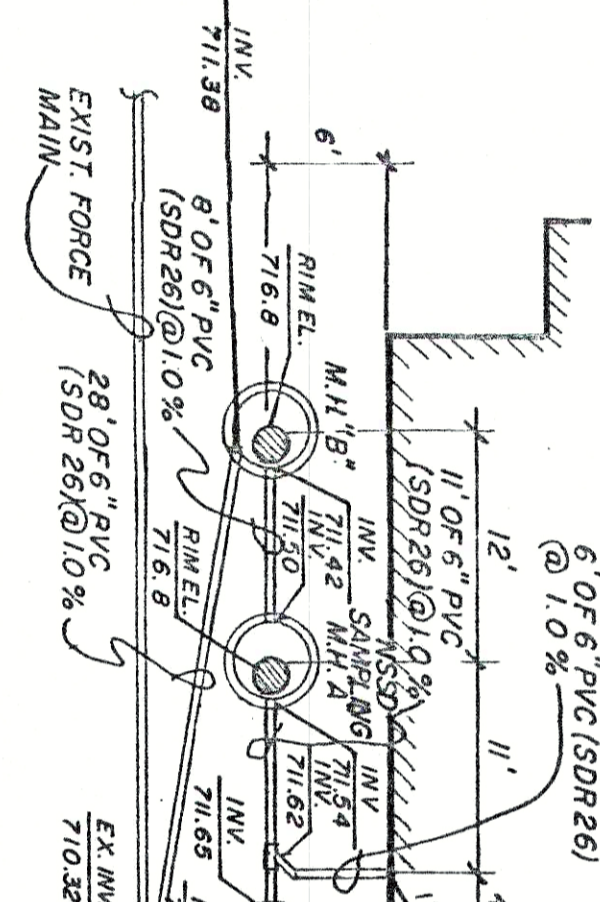
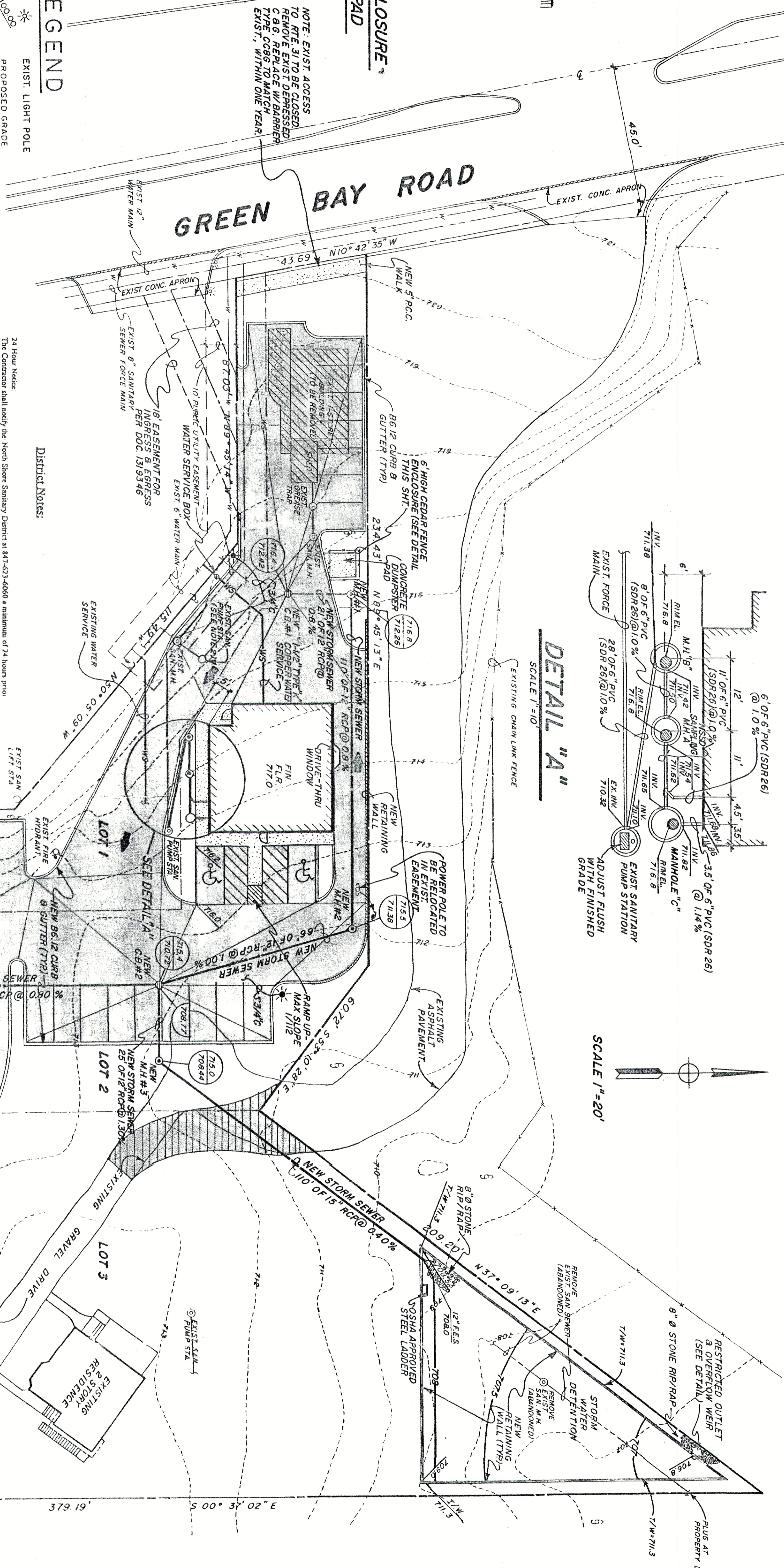
Bedding Note:
 All sanitary sewer pipe will be bedded with a minimum of 6" below the pipe and 12" above the pipe in 10" layers. The bedding may be adjusted at the discretion of the District if certain wet conditions are encountered. This is the only acceptable standard within the boundaries of the North Shore Sanitary District.

BENCHMARK:
 A TEMPORARY BENCH MARK FOR CONSTRUCTION PURPOSES HAS BEEN ESTABLISHED ON THE TOP OF THE BRASS PLUG LOCATED IN THE CENTER LINE OF BRUCKLEY ROAD AS INDICATED HEREON. ELEVATION: 718.46 (U.S.G.S. DATUM)

NOTES:

- 1) ADJUST ALL EXISTING SANITARY PUMP STATION AND MANHOLE RIMS FLUSH WITH FINISHED GRADE.
- 2) RELOCATE EXISTING SANITARY PUMP STATION CONTROLS AND VENT PIPE TO WEST WALL OF PROPOSED BUILDING. VERIFY LEAD CHARACTERISTICS OF SOILS AND PROVIDE NEW CONCRETE TOP DESIGNED FOR 4'-20' LOADING.

NOTE:
 WATER AND SEWER MAIN INSTALLATION, TESTING AND DISSECTION OF THE WATER MAIN SHALL CONFORM TO THE STANDARD SPECIFICATIONS FOR WATER AND SEWER MAIN CONSTRUCTION IN ILLINOIS, 1986 EDITION.



GREAT LAKES RESTAURANT
 BUCKLEY AT GREEN BAY ROAD
 NORTH CHICAGO, ILLINOIS

OVERALL SITE UTILITY PLAN

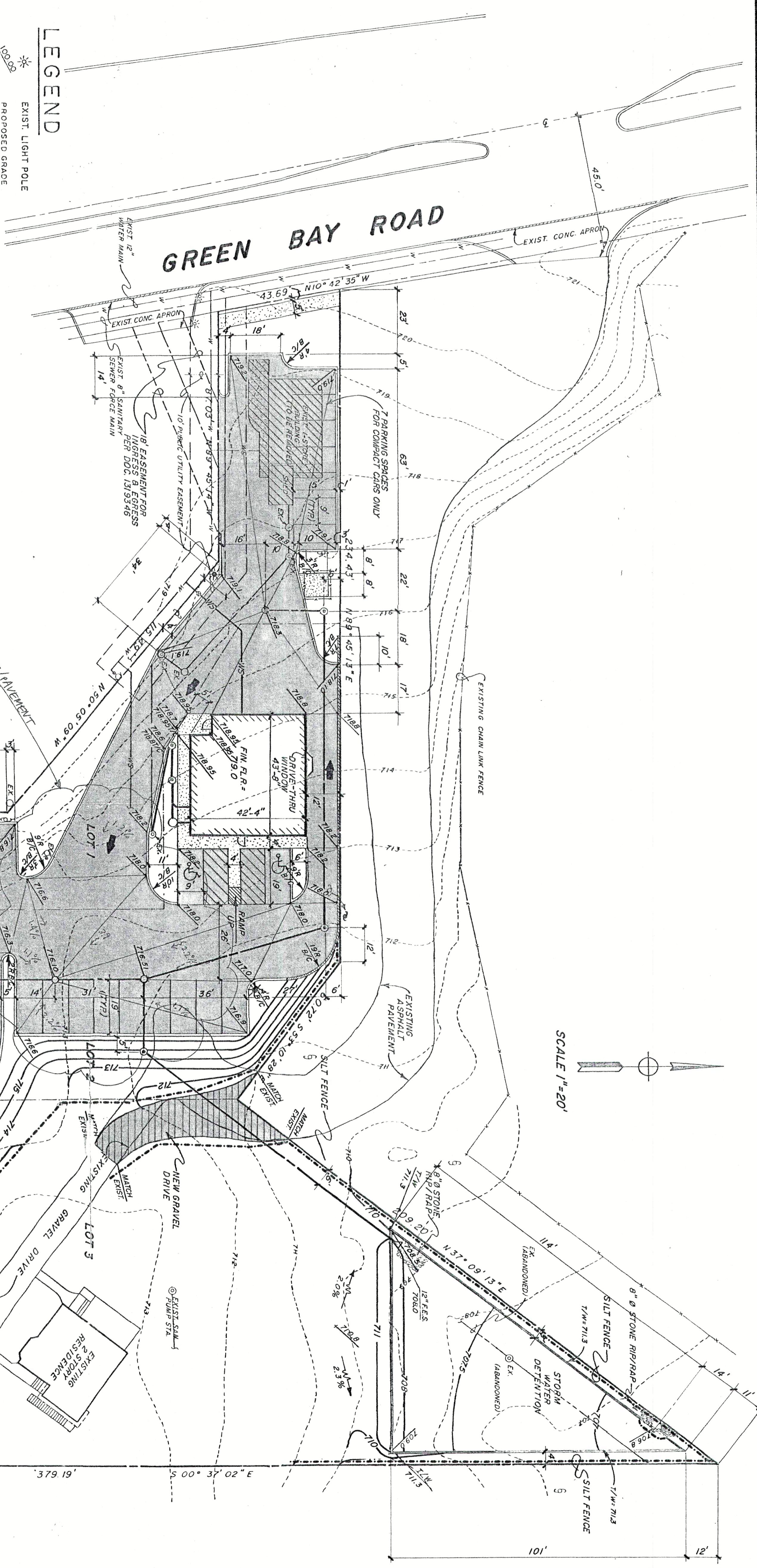
DATE: 9/12/97	REV: 7/23/98
REV: 9/30/97	
REV: 10/7/97	
REV: 5/8/98	
ROONEY CONSULTANTS, INC.	
CIVIL AND SANITARY ENGINEERS	
LAKEMOOR, ILLINOIS 60030	
(815) 363-0280	

- ### LEGEND
- EXIST. LIGHT POLE
 - PROPOSED GRADE
 - EXIST. CONTOUR
 - PROPOSED CONTOUR
 - RIM ELEVATION
 - INVERT ELEVATION
 - NEW CONCRETE WALK
 - LOT LINE
 - SILT FENCE
 - NEW LIGHT POLE
 - EXIST. FIRE HYDRANT
 - EXIST. WATER MAIN
 - EXIST. WATER SERVICE
 - PROPOSED WATER SERVICE
 - EXIST. SANITARY SEWER/FORCE MAIN
 - PROPOSED SANITARY SEWER/FORCE MAIN
 - PROPOSED STORM SEWER
 - EXIST. POWER POLE
 - CATCH BASIN
 - MANHOLE
 - NEW BITUMINOUS CONCRETE SURFACE
 - ONE WAY TRAFFIC PATTERN
 - INLET

NOTE: ALL ELEV. SHOWN ARE IN P. P. UNLESS NOTED OTHERWISE.

BENCHMARK: A TEMPORARY BENCHMARK FOR CONSTRUCTION PURPOSES HAS BEEN ESTABLISHED ON THE TOP OF THE BRASS PLUG LOCATED IN THE CENTER LINE OF BUCKLEY ROAD AS INDICATED HEREON. ELEVATION: 718.46 (U.S.G.S. DATUM)

NOTES:
1) ADJUST ALL EXISTING SANITARY PUMP STATION AND MANHOLE RIMS FLUSH WITH FINISHED GRADE.



BUCKLEY ROAD

EXIST. CONC. APRON

EXIST. CONC. WALK

EXIST. CONC. RETAINING WALL

RECEIVED
DEC 11 1998

RECEIVED
DEC 11 1998

REVISIONS

RECEIVED
DEC 11 1998

RECEIVED
DEC 11 1998

RECEIVED
DEC 11 1998

GREAT LAKES RESTAURANT
BUCKLEY AT GREEN BAY ROAD
NORTH CHICAGO, ILLINOIS

DIMENSION & GRADING PLAN

DATE: 9/12/97	REV: 7/23/89
REV: 9/30/97	REV: 12/6/98
REV: 10/7/97	REV: 12/10/98
REV: 5/8/98	
ROONEY CONSULTANTS, INC. CIVIL AND SANITARY ENGINEERS LAKEWOOD, ILLINOIS 60140 (615) 363-0280	