

CAPITAL
★
RETAIL
★
GROUP

COMMERCIAL SPACE FOR LEASE

5920-5928 Leesburg Pike, Falls Church VA



Commercial space on Leesburg Pike (Rte. 7) in Bailey's Crossroads. Spaces available from 1,600 s.f. up to 17,000 s.f. with signage opportunities. Close to Arlington, Seven Corners, and Old Town Alexandria. Rental rate \$35 to \$42 per s.f

- ★ Well-maintained
- ★ Professionally landscaped
- ★ Space can be subdivided
- ★ Plentiful onsite parking
- ★ Excellent visibility
- ★ High traffic volume

ROBERT TACK
HARRY LEE
DAVID YUN
MICHAEL SHIN

(202) 360-1938 / Robert@capitalretail.com
(571) 283-4402 / Harry@capitalretail.com
(703) 338-1636 / David@capitalretail.com
(571) 265-1311 / Michael@capitalretail.com

CAPITAL RETAIL GROUP

1751 Pinnacle Drive · #600 · McLean · VA · 22102
7315 Wisconsin Avenue · Suite 400 · MD 20814
www.capitalretail.com

CAPITAL
★
RETAIL
★
GROUP

COMMERCIAL SPACE FOR LEASE

5920-5928 Leesburg Pike, Falls Church VA



ROBERT TACK
HARRY LEE
DAVID YUN
MICHAEL SHIN

(202) 360-1938 / Robert@capitalretail.com
(571) 283-4402 / Harry@capitalretail.com
(703) 338-1636 / David@capitalretail.com
(571) 265-1311 / Michael@capitalretail.com

CAPITAL RETAIL GROUP

1751 Pinnacle Drive • #600 • McLean • VA • 22102
7315 Wisconsin Avenue • Suite 400 • MD 20814
www.capitalretail.com

CAPITAL
★
RETAIL
★
GROUP

COMMERCIAL SPACE FOR LEASE

5920-5928 Leesburg Pike, Falls Church VA



#5920-5928
17,000 SF

Zaaki Restaurant

Dawson's
Auto Care

U.S. Postal Service

Hokkaido
Seafood Buffet

San Miguel
Cafe

Subway

7-Eleven

ROBERT TACK
HARRY LEE
DAVID YUN
MICHAEL SHIN

(202) 360-1938 / Robert@capitalretail.com
(571) 283-4402 / Harry@capitalretail.com
(703) 338-1636 / David@capitalretail.com
(571) 265-1311 / Michael@capitalretail.com

CAPITAL RETAIL GROUP

1751 Pinnacle Drive • #600 • McLean • VA • 22102
7315 Wisconsin Avenue • Suite 400 • MD 20814
www.capitalretail.com

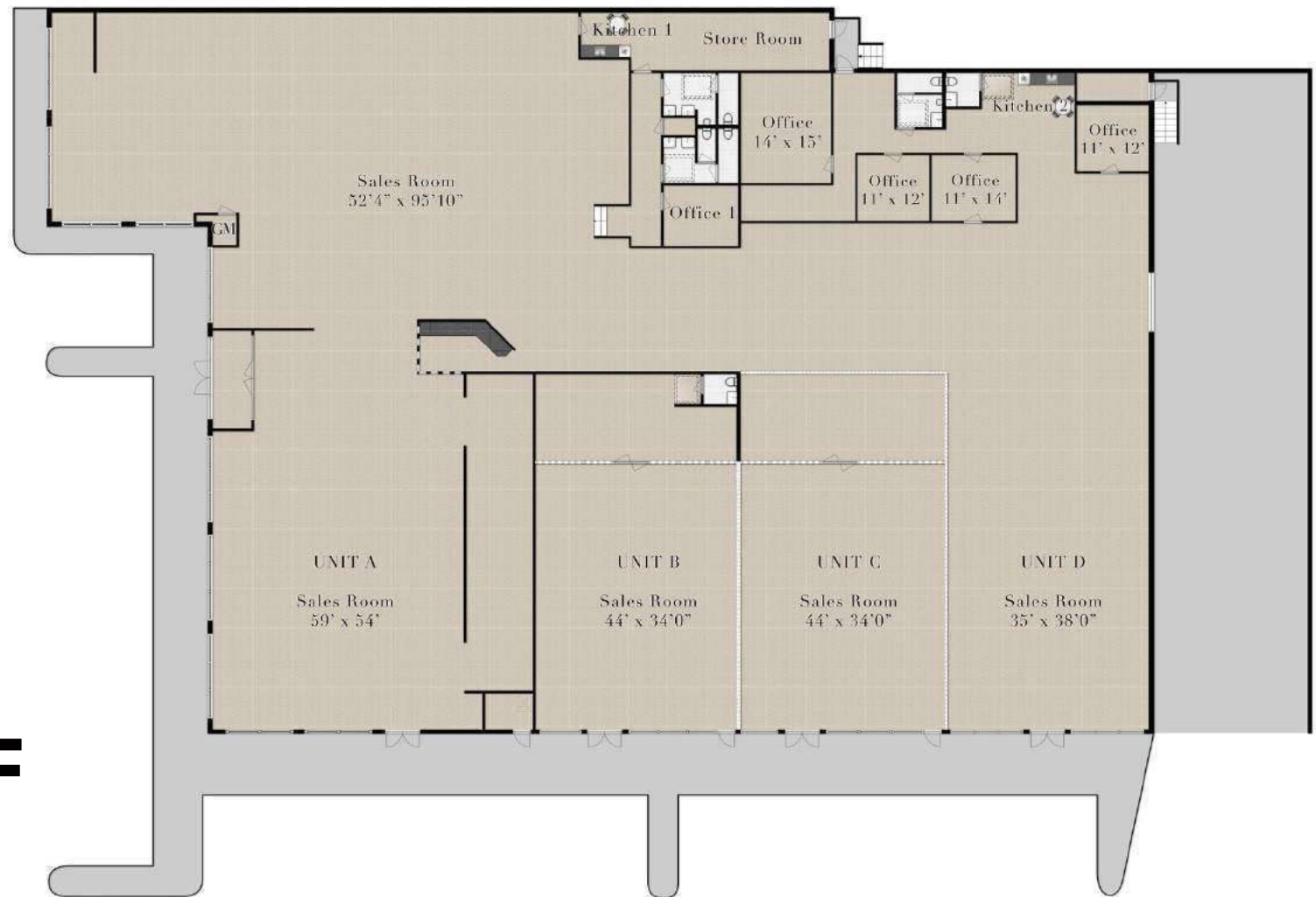
CAPITAL
★
RETAIL
★
GROUP

COMMERCIAL SPACE FOR LEASE

5920-5928 Leesburg Pike, Falls Church VA

FLOOR PLAN

UP TO 17,000 SF



ROBERT TACK
HARRY LEE
DAVID YUN
MICHAEL SHIN

(202) 360-1938 / Robert@capitalretail.com
(571) 283-4402 / Harry@capitalretail.com
(703) 338-1636 / David@capitalretail.com
(571) 265-1311 / Michael@capitalretail.com

CAPITAL RETAIL GROUP

1751 Pinnacle Drive · #600 · McLean · VA · 22102
7315 Wisconsin Avenue · Suite 400 · MD 20814
www.capitalretail.com