



PUGET SOUND PLAZA

1325 Fourth Avenue
Seattle, Washington 98101

Damon McCartney
(206) 838-7633
mccartney@broderickgroup.com

David Greenwood
(206) 838-7635
greenwood@broderickgroup.com



Broderick Group, Inc.
10500 NE 8th Street, Suite 900
Bellevue, WA 98004
main: (206) 838-5775

broderickgroup.com

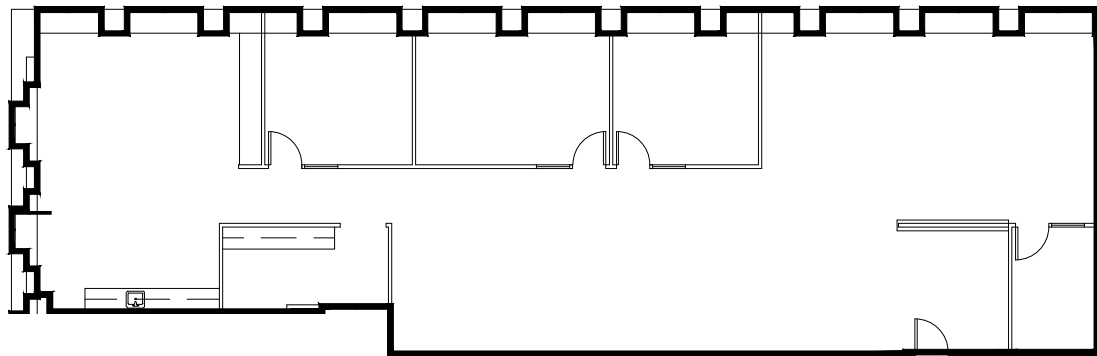
The information contained herein has been given to us by the owner or sources which we deem reliable. We have no reason to doubt its accuracy, but we do not guarantee it. Prospective tenants should carefully verify all information contained herein.



For virtual tour, visit:
bit.ly/2N3Ajxz

SUITE 1010

3,445 RSF



SPACE FEATURES

- » Available now!
- » 3 private offices
- » Break room
- » Kitchenette
- » West facing views
- » Contiguous with Suite 1005 for a total of 6,456 RSF



METROTRACT
SEATTLE