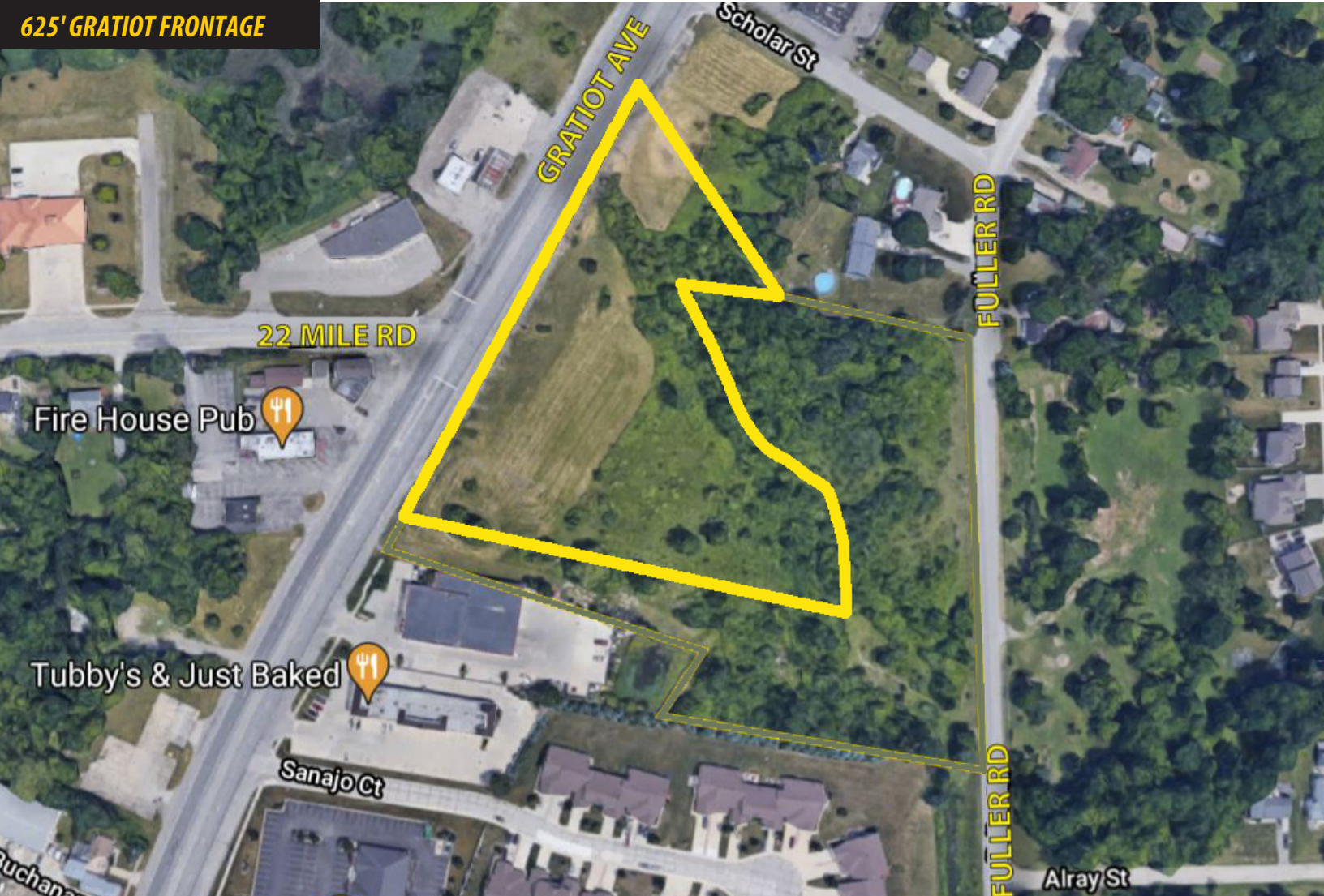


625' GRATIOT FRONTAGE



PILOT
PROPERTY GROUP

ZONED C-3

48936 GRATIOT, CHESTERFIELD TWP

PROPERTY OVERVIEW:

Approximately 625' of frontage on Gratiot.
 All utilities at the street.
 There is a traffic light on Gratiot at 22 Mile Road.

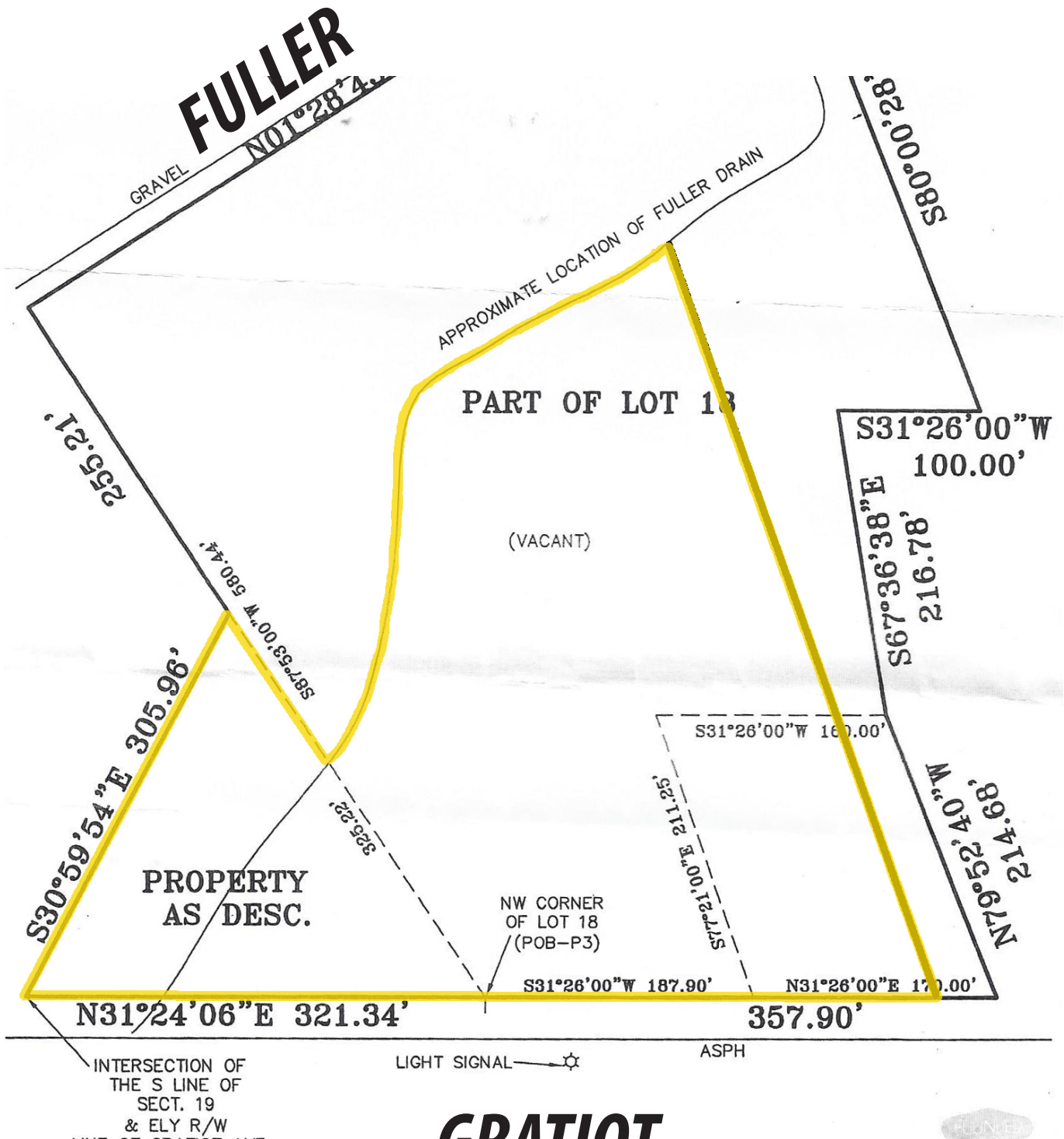
Property Type:..... Vacant Land
 Cross Streets:..... Gratiot @ 22 Mile Road
 Sale Price:..... \$395,000
 Lot Size..... 4.4 Acres +/-
 Frontage..... 625 +/-
 Zoning:..... C-3



AGENT CONTACT INFO

KEN MINNE O: 586.254.0900 • C: 586.291.5525 • ken@pilotpg.com

Matching the right people to the right place.



Matching the right people to the right place.