

401 MEDICAL GATEWAY

9520 West Palm Lane, Phoenix



LOCATION

Centrally located between three hospital systems

- Abrazo West Campus, 188 beds – 5.7 Miles
- Banner Estrella Medical Center, 317 beds – 1 Mile
- Dignity St. Joseph's Westgate Medical Center, 23 beds – 6.4 Miles

HIGHLIGHTS

- Unparalleled freeway visibility with $\pm 110,000$ VPD on the Loop – 101
- Freeway pylon signage and building signage available
- Immediate access to I – 10 and Loop 101 freeways
- Professionally managed and maintained

MEDICAL OR OFFICE

BUILDING SIZE: $\pm 50,040$ RSF

MEDICAL: $\pm 2,500$ SF to $\pm 19,411$ SF Divisible

OFFICE: Plug & play high density office space available

PARKING RATIO: Ample parking; covered and surface available

GENERATOR: Back up generator servicing the space

TENANTS



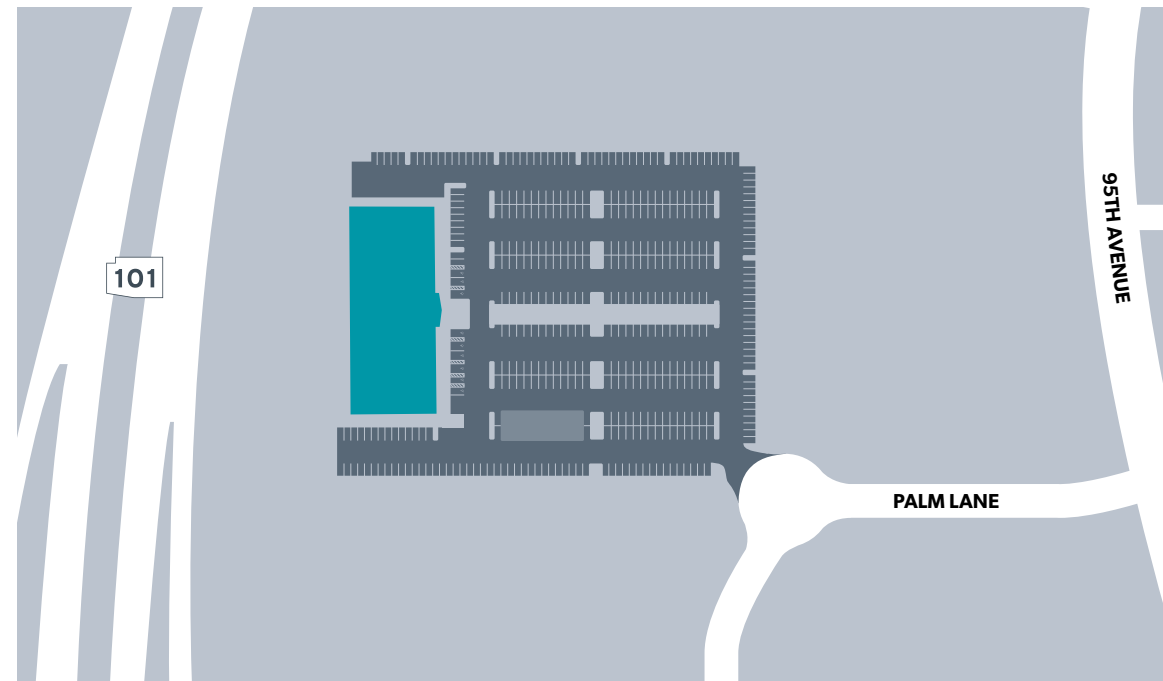
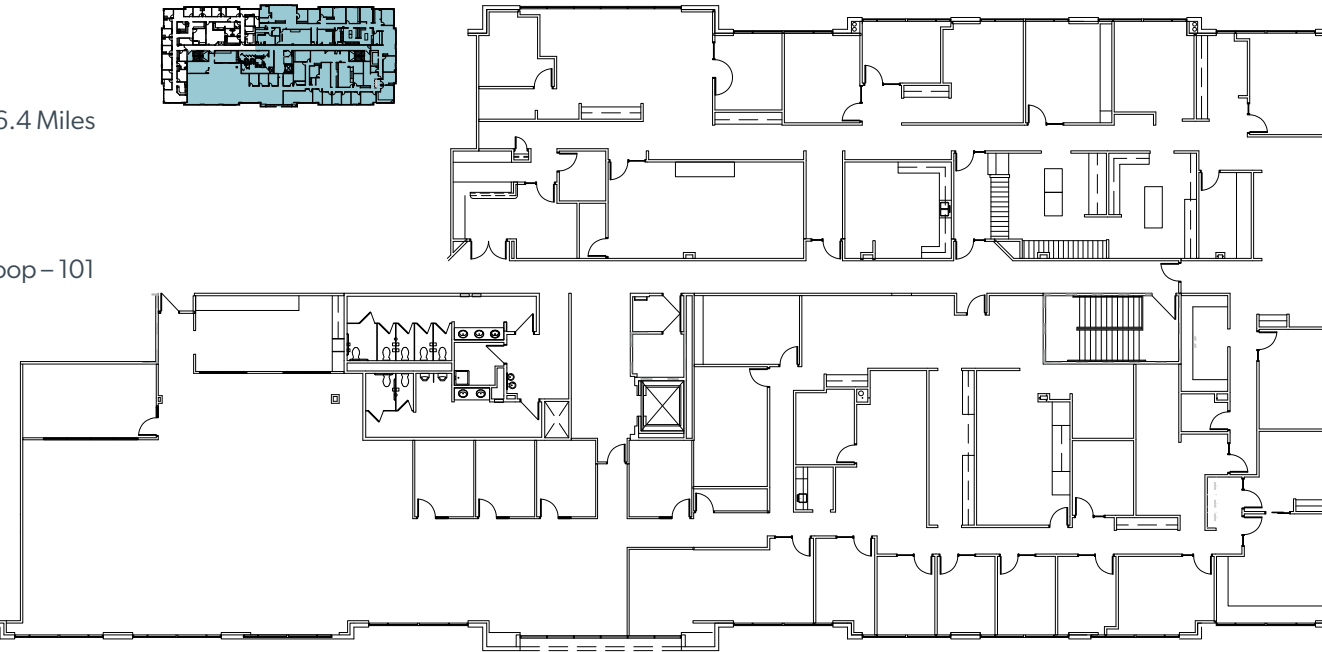
University
of Phoenix®

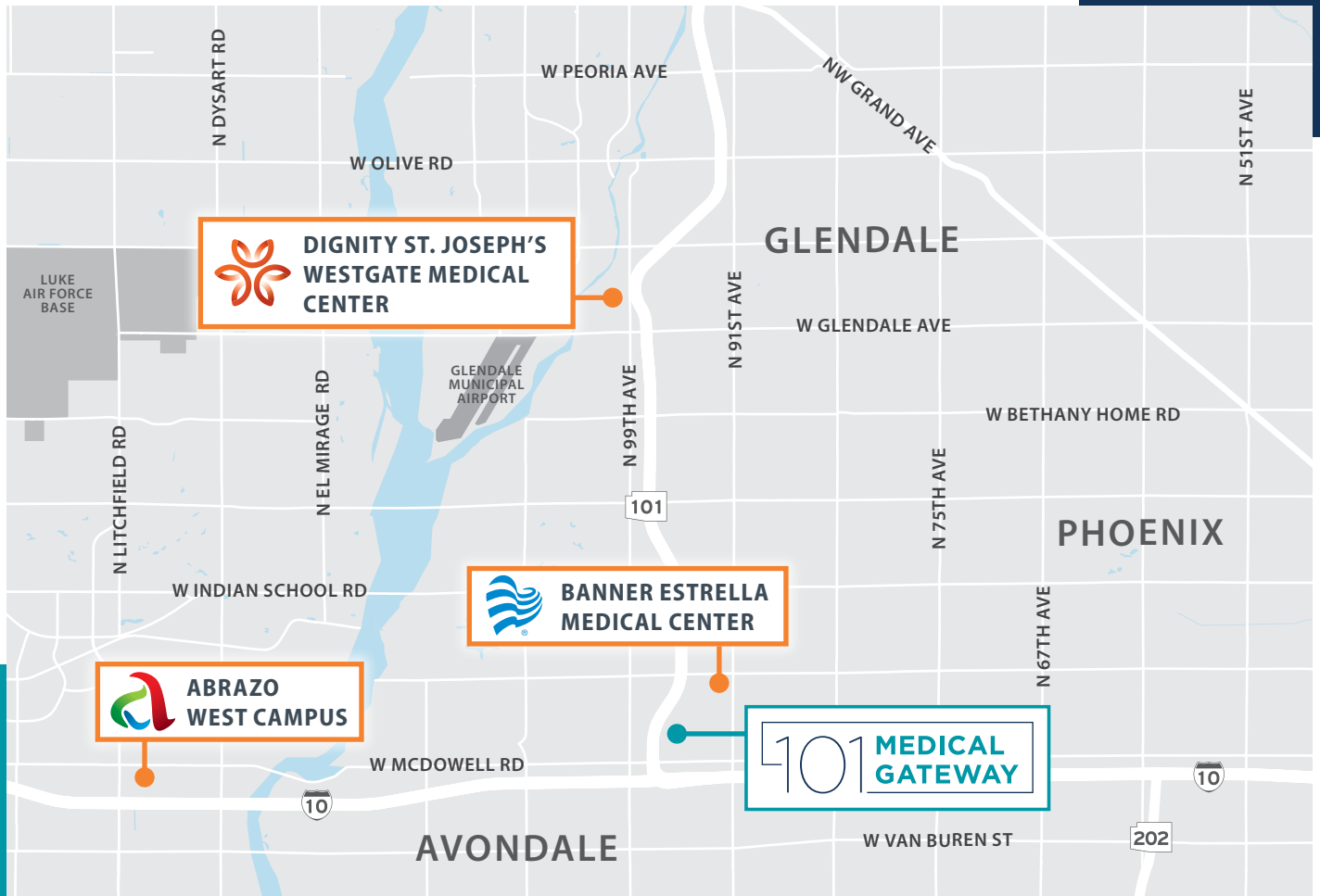


DEMOGRAPHICS

	1-MI	3-MI	5-MI
Total Population (2020)	9,401	103,937	209,937
Pop Growth (2020-2025)	1.11%	1.52%	1.35%
Average Age	28.7	29.3	28.5
Median Household Inc	\$58,062	\$55,632	\$56,374
Avg Household Size	3.90	3.80	3.97
Retail	95	452	741
Restaurants	40	158	254

$\pm 2,500$ SF TO $\pm 19,411$ SF DIVISIBLE





TRANSWESTERN REAL ESTATE SERVICES



Cypress West
— PARTNERS —
ACQUIRE - DEVELOP - MANAGE - LEASE

Medical Leasing:

Vince Femiano

602.954.7559

vince.femiano@transwestern.com

Kevin Smigiel

602.265.5502

kevin.smigiel@transwestern.com

Office Leasing:

Brian Zurek

949.981.7725

brian.zurek@transwestern.com

2501 E Camelback Rd, Ste 1

Phoenix, AZ 85016

transwestern.com

The information provided herein was obtained from sources believed reliable; however, Transwestern makes no guarantees, warranties or representations as to the completeness of accuracy thereof. The presentation of this property is submitted subject to errors, omissions, change of price or conditions, prior to sale or lease, or withdrawal without notice. Copyright © 2021 Transwestern.