



Available For Lease

## Office Space

### Monroe Business Park

105 Evesboro-Medford Road  
Marlton, NJ

#### Property Description

Great location with plenty of amenities nearby, including hotels, restaurants, day care and public transportation

- Newly constructed buildings
- Ample parking
- Minutes from NJ Turnpike & I-295
- 25 minutes to Center City Philadelphia

**Limited Time Price Reduction**  
**\$16.50/SF + Utilities and Cleaning**

For more information:

**Rebecca Ting, SIOR**

+1 856 234 9600 • [rebecca.ting@naimertz.com](mailto:rebecca.ting@naimertz.com)

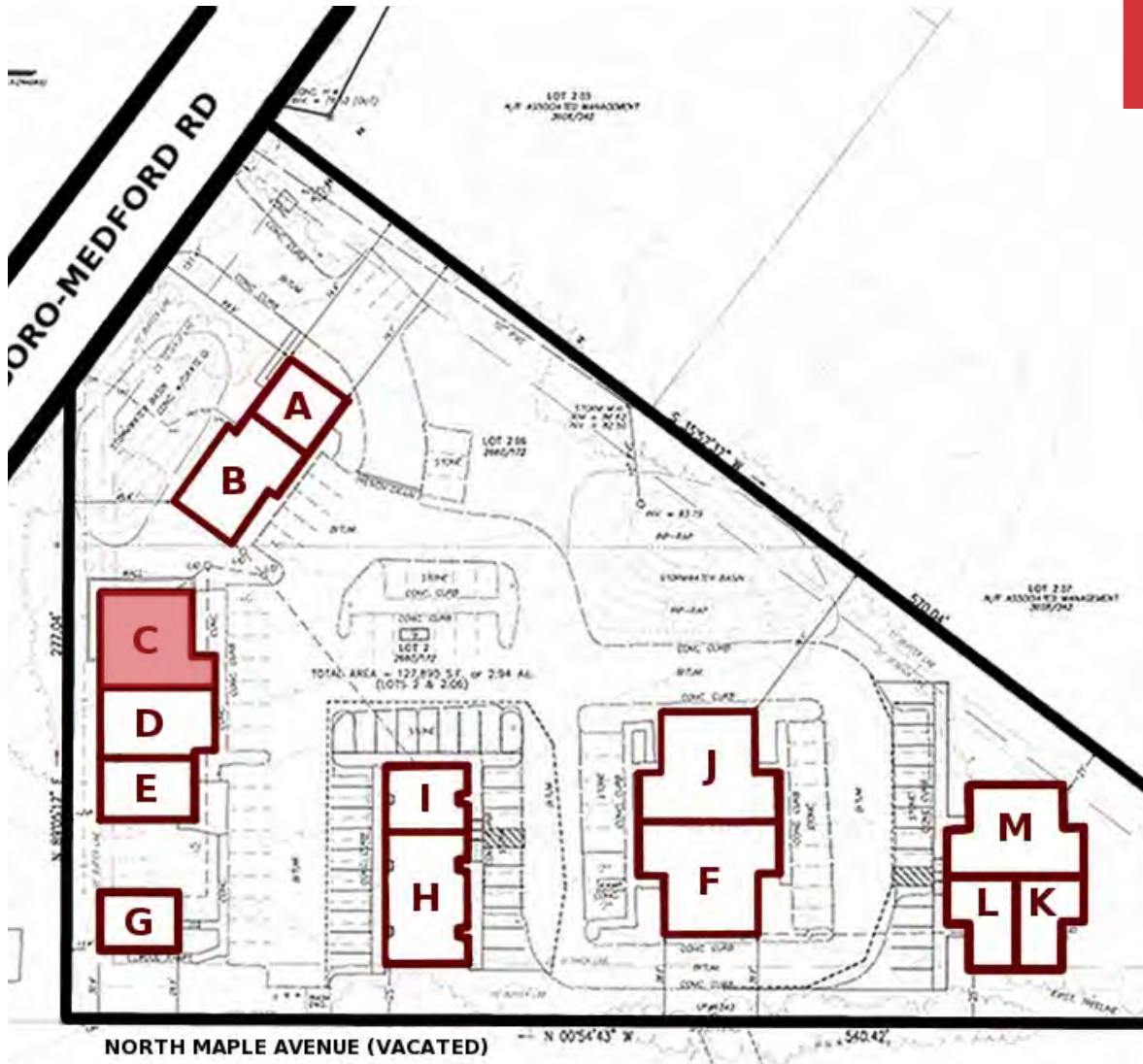
**Julie Kronfeld, SIOR**

+1 856 802 6516 • [julie.kronfeld@naimertz.com](mailto:julie.kronfeld@naimertz.com)

NO WARRANTY OR REPRESENTATION, EXPRESS OR IMPLIED, IS MADE AS TO THE ACCURACY OF THE INFORMATION CONTAINED HEREIN, AND THE SAME IS SUBMITTED SUBJECT TO ERRORS, OMISSIONS, CHANGE OF PRICE, RENTAL OR OTHER CONDITIONS, PRIOR SALE, LEASE OR FINANCING, OR WITHDRAWAL WITHOUT NOTICE, AND OF ANY SPECIAL LISTING CONDITIONS IMPOSED BY OUR PRINCIPALS NO WARRANTIES OR REPRESENTATIONS ARE MADE AS TO THE CONDITION OF THE PROPERTY OR ANY HAZARDS CONTAINED THEREIN ARE ANY TO BE IMPLIED.

21 Roland Avenue  
Mount Laurel, NJ 08054  
+1 856 234 9600  
[naimertz.com](http://naimertz.com)

Site Plan - Monroe Business Park  
105 Evesboro-Medford Rd, Marlton, NJ



### Current Availabilities

**Suite C** 2,140± RSF  
3 private offices, reception, kitchenette,  
bullpen, conference room, restroom

For more information:

**Rebecca Ting, SIOR**

+1 856 234 9600 • [rebecca.ting@naimertz.com](mailto:rebecca.ting@naimertz.com)

**Julie Kronfeld, SIOR**

+1 856 802 6516 • [julie.kronfeld@naimertz.com](mailto:julie.kronfeld@naimertz.com)

**Limited Time Price Reduction**  
**\$16.50/SF + Utilities and Cleaning**



21 Roland Avenue  
Mount Laurel, NJ 08054  
+1 856 234 9600  
[naimertz.com](http://naimertz.com)

## Monroe Business Park

105 Evesboro-Medford Rd, Marlton, NJ

