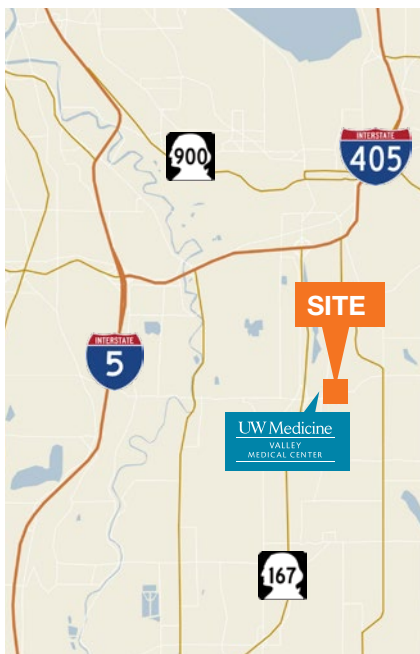


Pacific Medical Building

601 South Carr Road
Renton, WA



Features

1,502 SF of fully furnished, “move-in ready,” dental space off elevator lobby

Ample free parking (4.7/1,000 SF)

4-story, multi-tenant, medical and dental office building.
Pharmacy on site.

Professional building finishes and tenant improvements

Excellent Interstate 167 access

Sublease through 8/31/20.
Longer lease term available

Within easy walking distance to UW Medicine Valley Medical Center.
Other medical practices, public transit, restaurants, and retail nearby

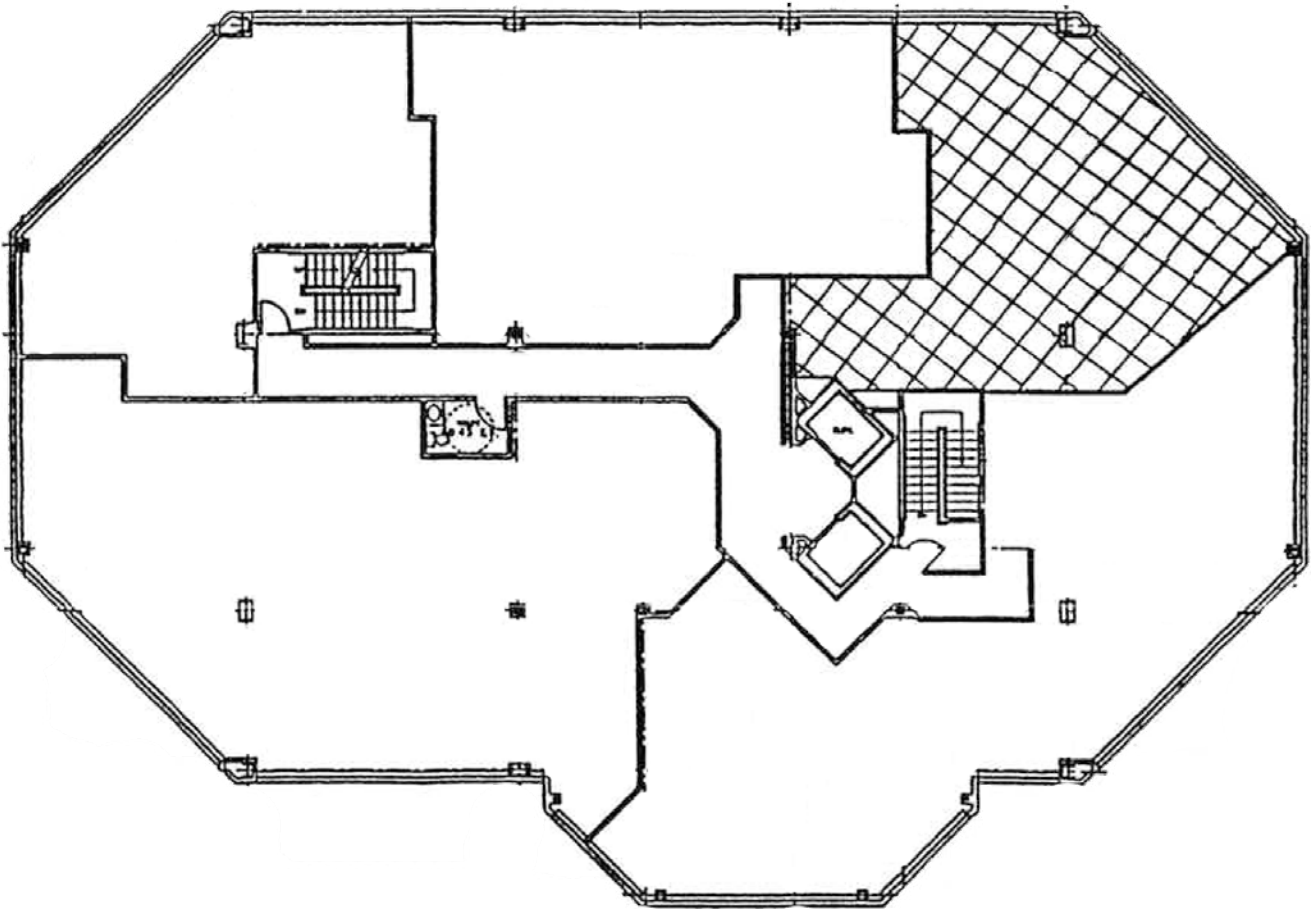
Existing improvements include:
3 operatories, 1 office, breakroom, lab, reception area, restroom

For more information, contact:

Todd Battison
206.296.9621
toddb@kiddermathews.com

Pacific Medical Building

Third Floor



Contact

Todd Battison

206.296.9621

toddb@kiddermathews.com
