

**FOR
LEASE****LAKE SHORES PLAZA**

Lease Rate:
\$15.00 SF/yr

PROPERTY OVERVIEW

Food Lion anchored shopping center adjacent to Little Creek Amphibious base

DEMOGRAPHICS**1 MILE****3 MILES****5 MILES****Households:**

2,356

22,066

56,487

Population:

6,903

56,606

145,339

Avg HH Income:

\$72,622

\$74,909

\$72,614

PROPERTY HIGHLIGHTS

- Near Joint Expeditionary Base Little Creek with 30 Navy and Auxilliary Ships and 126 smaller craft
- Navy Cyber Forces, Naval Network Warfare and Expeditionary Combat Commands
- Active-duty personnel: 14,574 Civilian personnel: 4,993
- Food Lion, Navy Federal Credit Union, Second Chance Thrift

AVAILABLE SPACES**Suite 1**

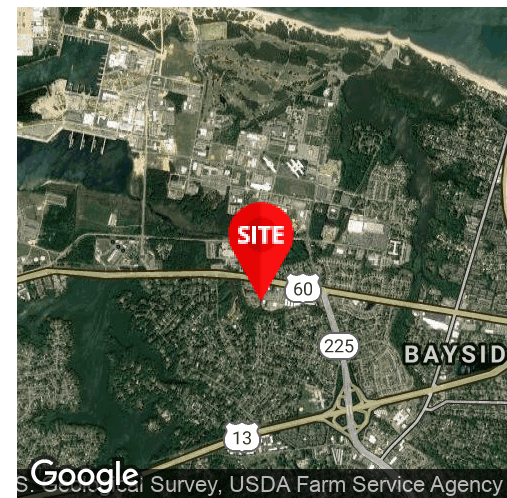
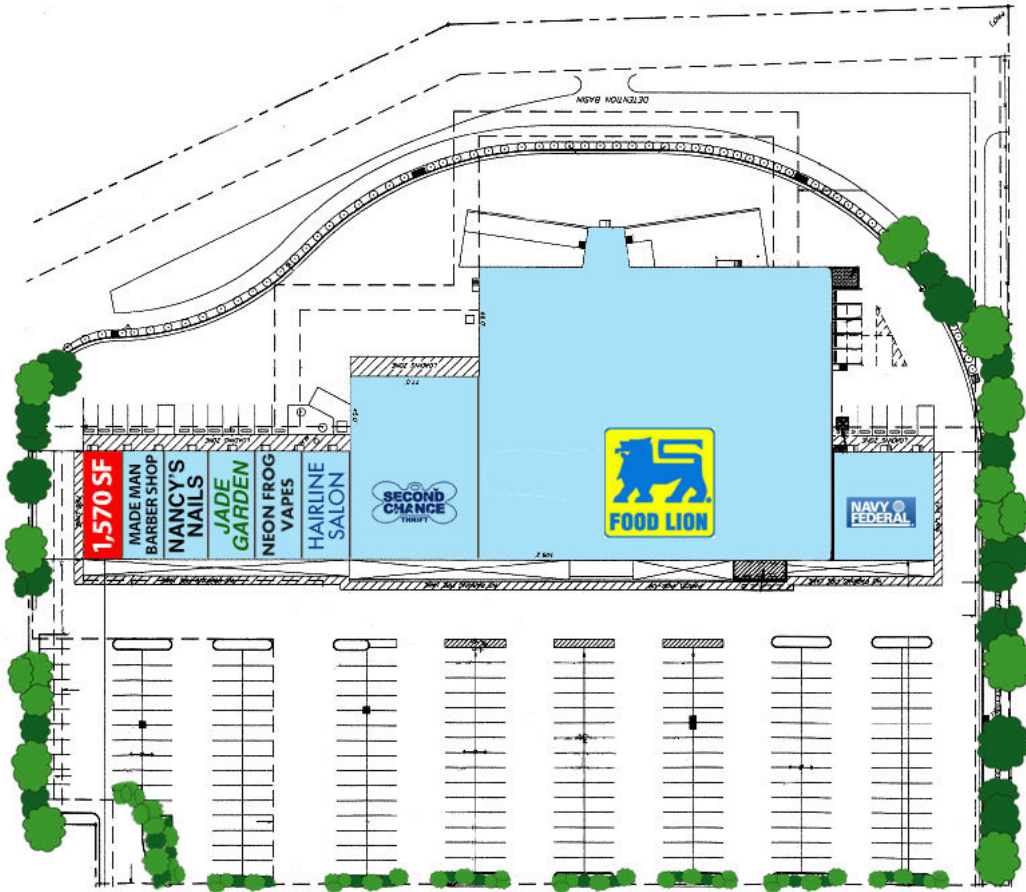
1,570 SF

FOR FURTHER INFORMATION, PLEASE CONTACT:

DAVID BICKFORD • dbickford@divaris.com • 757.333.4351



**FOR
LEASE**



FOR FURTHER INFORMATION, PLEASE CONTACT:
DAVID BICKFORD • dbickford@divaris.com • 757.333.4351

