

# 480 PRESTON COURT, SUITE A LIVERMORE, CA

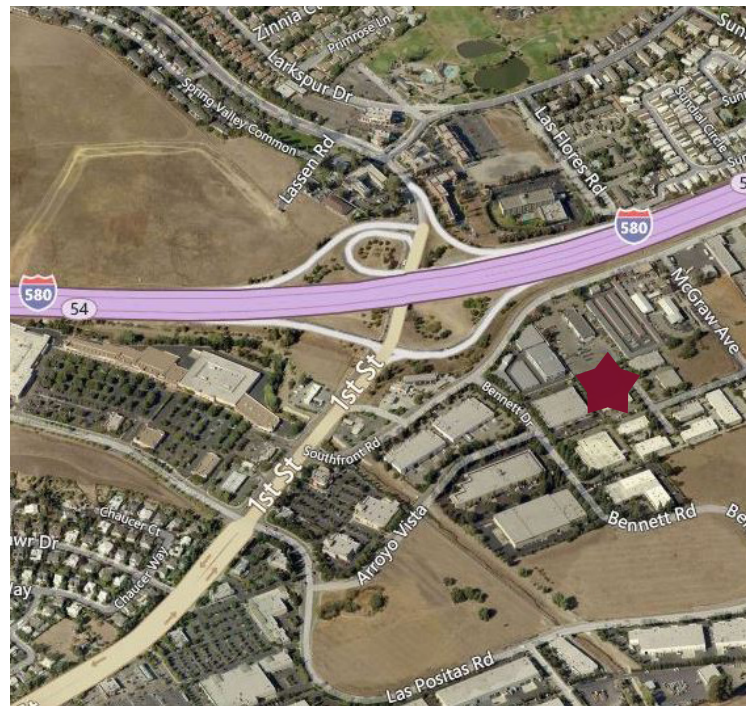


## PROPERTY INFORMATION

## AREA MAP

### Suite A: 3,075±SF

- Reception area and two (2) private offices
- Two (2) grade level doors
- Available July 1, 2017
- No CAM charges
- **Asking: \$1.20/SF Gross**



TONY FERRERI

LIC. ID# 01231805

TFERRERI@LEE-ASSOCIATES.COM

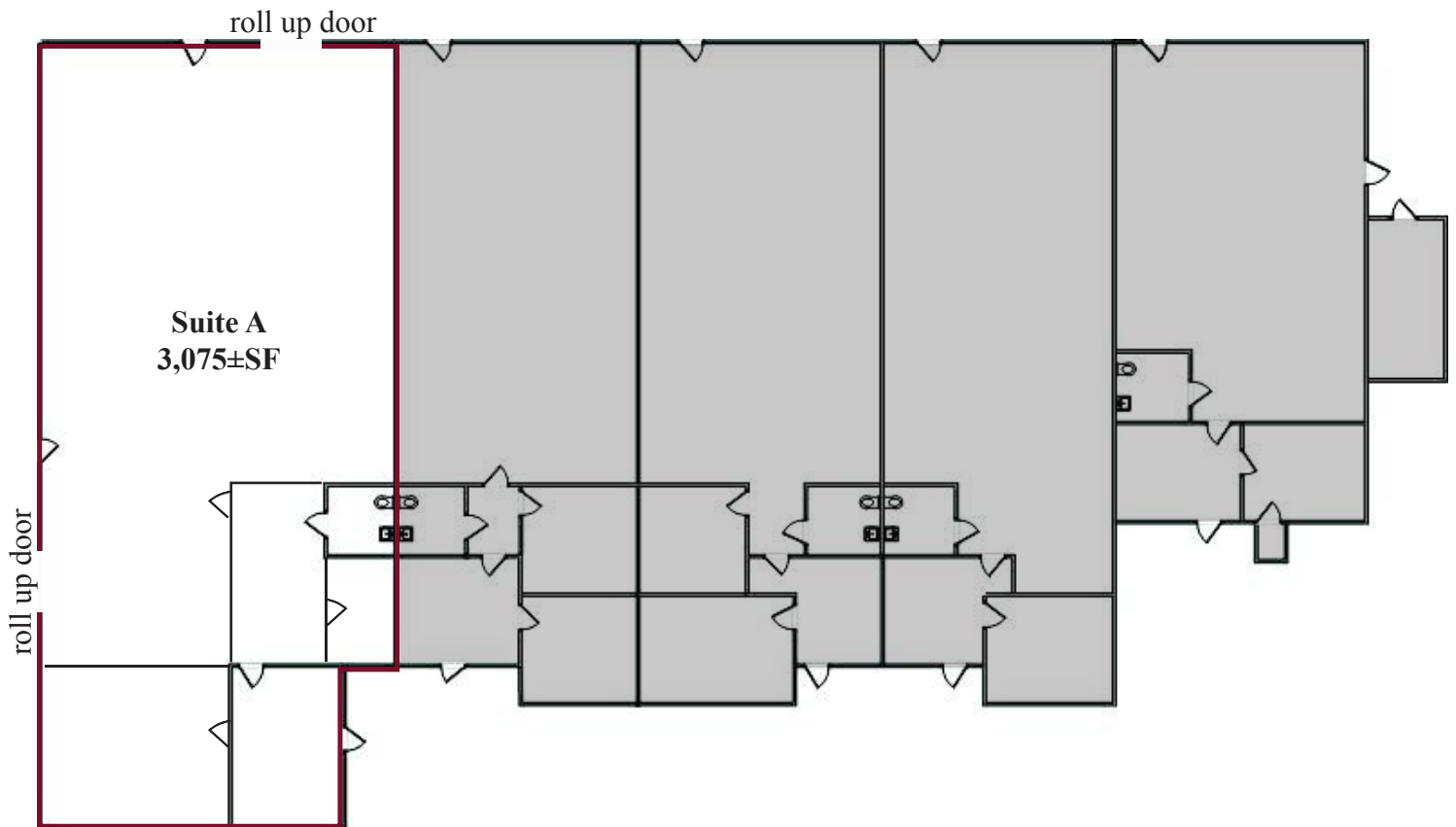
925-737-4147

 **LEE &  
ASSOCIATES®**  
COMMERCIAL REAL ESTATE SERVICES

The information contained herein is based on estimates and assumptions and is presented for illustration purposes only.  
No representations, warranties or guarantees of any kind are made.

# 480 PRESTON COURT, SUITE A LIVERMORE, CA

## FLOOR PLAN



**TONY FERRERI**

LIC. ID# 01231805

TFERRERI@LEE-ASSOCIATES.COM

925-737-4147

**LEE &  
ASSOCIATES®**  
COMMERCIAL REAL ESTATE SERVICES

The information contained herein is based on estimates and assumptions and is presented for illustration purposes only.  
No representations, warranties or guarantees of any kind are made.