

# FOR LEASE

LA JOLLA PACIFIC BUILDING  
7910-7924 Ivanhoe Avenue  
La Jolla, CA 92037



CAPITAL GROWTH  
PROPERTIES, INC.

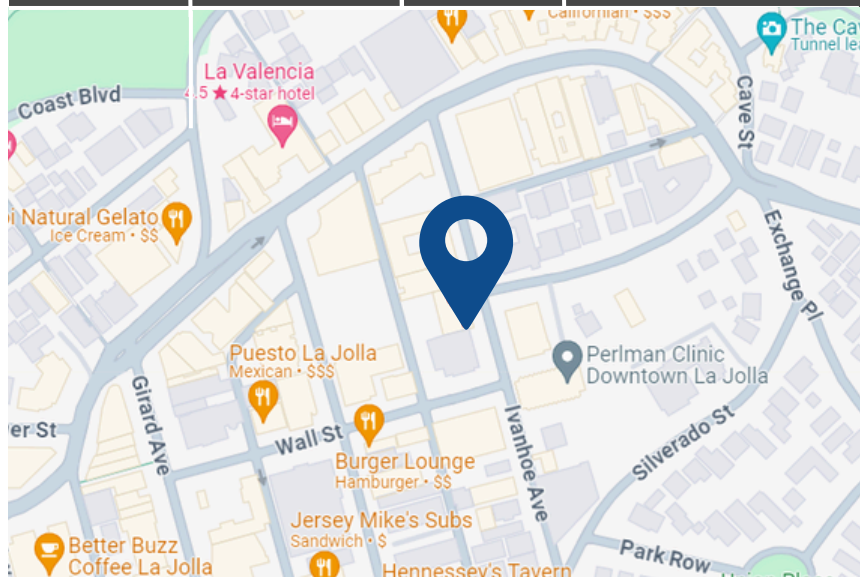


## PROPERTY HIGHLIGHTS

- ✓ High-visibility storefront in La Jolla.
- ✓ Great office space.
- ✓ Prominent building signage for brand exposure.
- ✓ Heavy foot traffic area near hotels, restaurants, shops.
- ✓ 24-hour building access, HVAC, and parking.

## SPACE AVAILABLE

TYPE	SUITE	SF	RATE
Office	1	514	\$3.20/PSF +electric



[www.cgpincre.com](http://www.cgpincre.com)

# FOR LEASE

LA JOLLA PACIFIC BUILDING  
7910-7924 Ivanhoe Avenue  
La Jolla, CA 92037



CAPITAL GROWTH  
PROPERTIES, INC.



[www.cgpincre.com](http://www.cgpincre.com)

# FOR LEASE

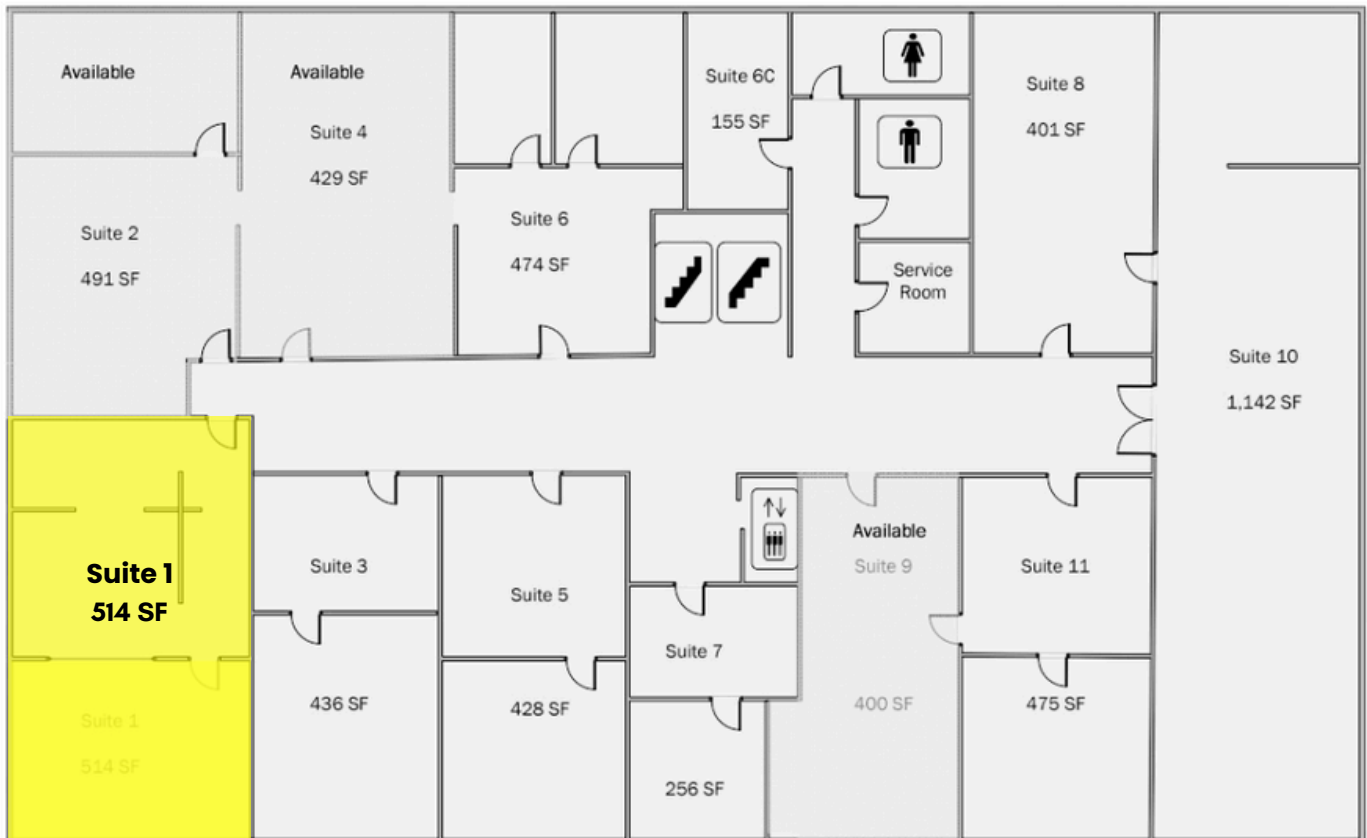
LA JOLLA PACIFIC BUILDING  
7910-7924 Ivanhoe Avenue  
La Jolla, CA 92037



CAPITAL GROWTH  
PROPERTIES, INC.

## FLOOR PLAN

**Suite 1**  
**Office space**



# FOR LEASE

LA JOLLA PACIFIC BUILDING  
7910-7924 Ivanhoe Avenue  
La Jolla, CA 92037



CAPITAL GROWTH  
PROPERTIES, INC.



**7910-7924 Ivanhoe Avenue - La Jolla, CA 92037**



**TODD LAW**

Senior Vice President  
tlaw@cgpincre.com  
858.729.9305  
CA DRE Lic. 01309241  
WA DOL Lic. 27587



**JILL MORTON**

Senior Vice President  
jmorton@cgpincre.com  
858.729.9308  
CA DRE Lic: 00868254



**GREG WAGNER**

Senior Vice President  
gwagner@cgpincre.com  
858.729.9306  
CA DRE Lic: 01120775

**Capital Growth Properties, Inc.**



1120 Silverado Street, Suite 200  
La Jolla, CA 92037



858.729.9300



www.cgpincre.com



@cgpincre

[www.cgpincre.com](http://www.cgpincre.com)