

620 N HARTFORD ST

Chandler, AZ 85225 | ±2.34 Acres Available

LAND FOR SALE



Exclusive Contacts:

Leroy Breinholt

D 480.966.6593

M 602.377.4687

lbreinholt@cpi.az.com

Cory Sposi

D 480.621.4025

M 480.586.1195

csposi@cpi.az.com

David Bean

D 480.214.1105

M 480.299.5964

dbean@cpi.az.com

Cory Breinholt

D 480.889.2569

M 480.220.9987

cbreinholt@cpi.az.com



COMMERCIAL PROPERTIES INC.

Locally Owned. Globally Connected. CRPAC International

TEMPE: 2323 W. University Drive, Tempe, AZ 85281 | 480.966.2301
SCOTTSDALE: 8777 N. Gainey Center Dr., Suite 245, Scottsdale, AZ 85258 | www.cpi.az.com

620 N HARTFORD ST

Chandler, AZ 85225 | ±2.34 Acres Available

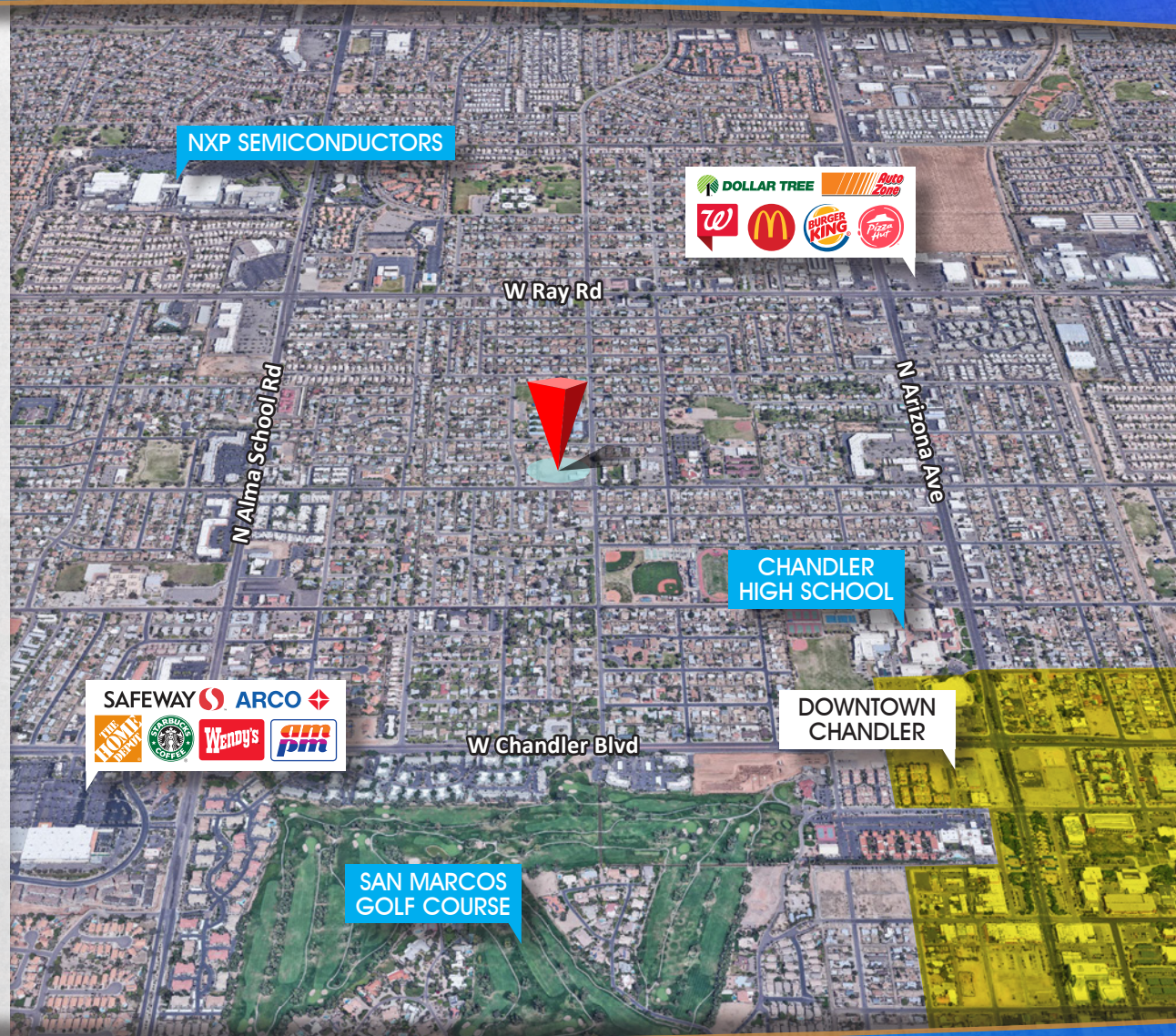
LAND FOR SALE

PROPERTY HIGHLIGHTS

- PARCEL: 302-50-098
- ±102,068 SF / ±2.34 ACRES
- PRICE: \$950,000 (\$9.30 PSF)
- ZONING: C-1, CITY OF CHANDLER
(CAN EASILY DOWN ZONE TO MULTI-FAMILY OR SINGLE FAMILY)
- LOCATED AT W GALVESTON & N HARFORD
CLOSE TO DOWNTOWN CHANDLER
- COMES WITH A CURRENT ALTA SURVEY AND ENVIRONMENTAL REPORT

DEMOGRAPHICS

	1M	3M
POPULATION:	19,109	145,482
HOUSEHOLDS:	6,384	54,516
MEDIAN AGE:	30.2	34.3
AVG HH SIZE:	2.98	2.66
AVG HH INCOME:	\$67,095	\$91,501



The information contained herein has been obtained from various sources. We have no reason to doubt its accuracy; however, J & J Commercial Properties, Inc. has not verified such information and makes no guarantee, warranty or representation about such information. The prospective buyer or lessee should independently verify all dimensions, specifications, floor plans, and all information prior to the lease or purchase of the property. All offerings are subject to price change, prior sale, lease, or withdrawal from the market without prior notice. 09 25 19

COMMERCIAL PROPERTIES INC.
Locally Owned. Globally Connected. CFRAC International

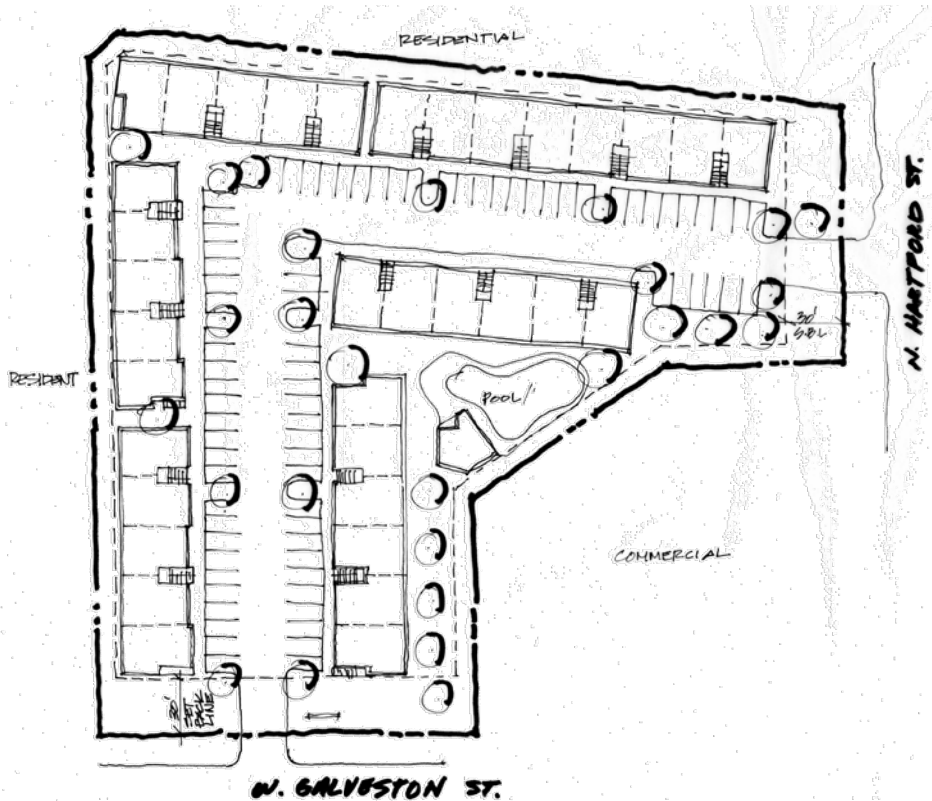
TEMPE: 2323 W. University Drive, Tempe, AZ 85281 | 480.966.2301
SCOTTSDALE: 8777 N. Gainey Center Dr., Suite 245, Scottsdale, AZ 85258 | www.cpiaz.com

620 N HARTFORD ST

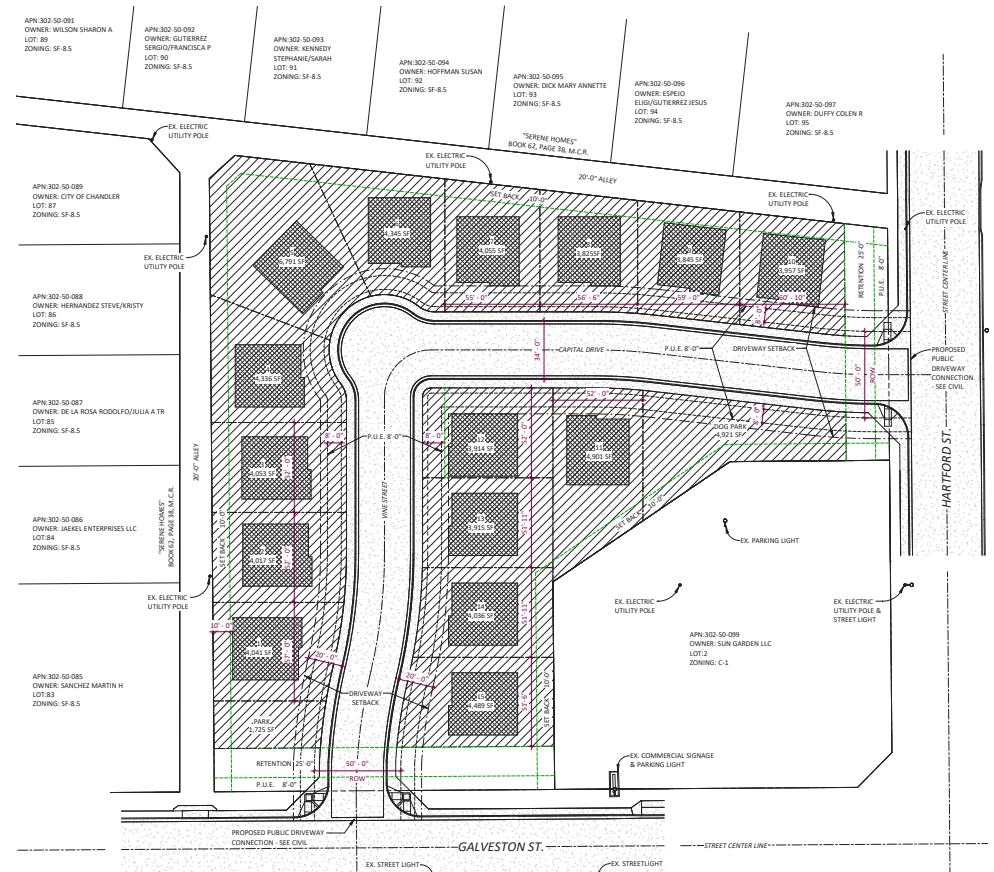
Chandler, AZ 85225 | ±2.34 Acres Available

LAND FOR SALE

CONCEPTUAL SITE PLANS (MULTI-FAMILY)



(SINGLE FAMILY)



The information contained herein has been obtained from various sources. We have no reason to doubt its accuracy; however, J & J Commercial Properties, Inc. has not verified such information and makes no guarantee, warranty or representation about such information. The prospective buyer or lessee should independently verify all dimensions, specifications, floor plans, and all information prior to the lease or purchase of the property. All offerings are subject to price change, prior sale, lease, or withdrawal from the market without prior notice. 09 25 19