



TWO BUSHWICK RETAIL SPACES AVAILABLE
427-31 KNICKERBOCKER AVE
 LOCATED AT THE NE CORNER OF HARMAN STREET

APPROXIMATE SIZE:

- 2,500 sq. ft. - Ground (corner)
- 1,500 sq. ft. - Basement (corner)
- 2,500 sq. ft. - Ground (in-line)
- 1,500 sq. ft. - Basement (in-line)

FRONTAGE:

- 40' of wrap-around - corner
- 25' - in-line

POSSESSION:

Arranged

COMMENTS:

- Two Bushwick retail spaces available
- High ceilings with fantastic 3-story signage
- Clean, column-free space
- Across from McDonald's with annual sales north of \$2,000,000
- Located on one of the major retail strips in Bushwick
- CityMD, Modell's, and Blink Fitness recently signed leases for this street

NEIGHBORING TENANTS:



MASS TRANSPORTATION:

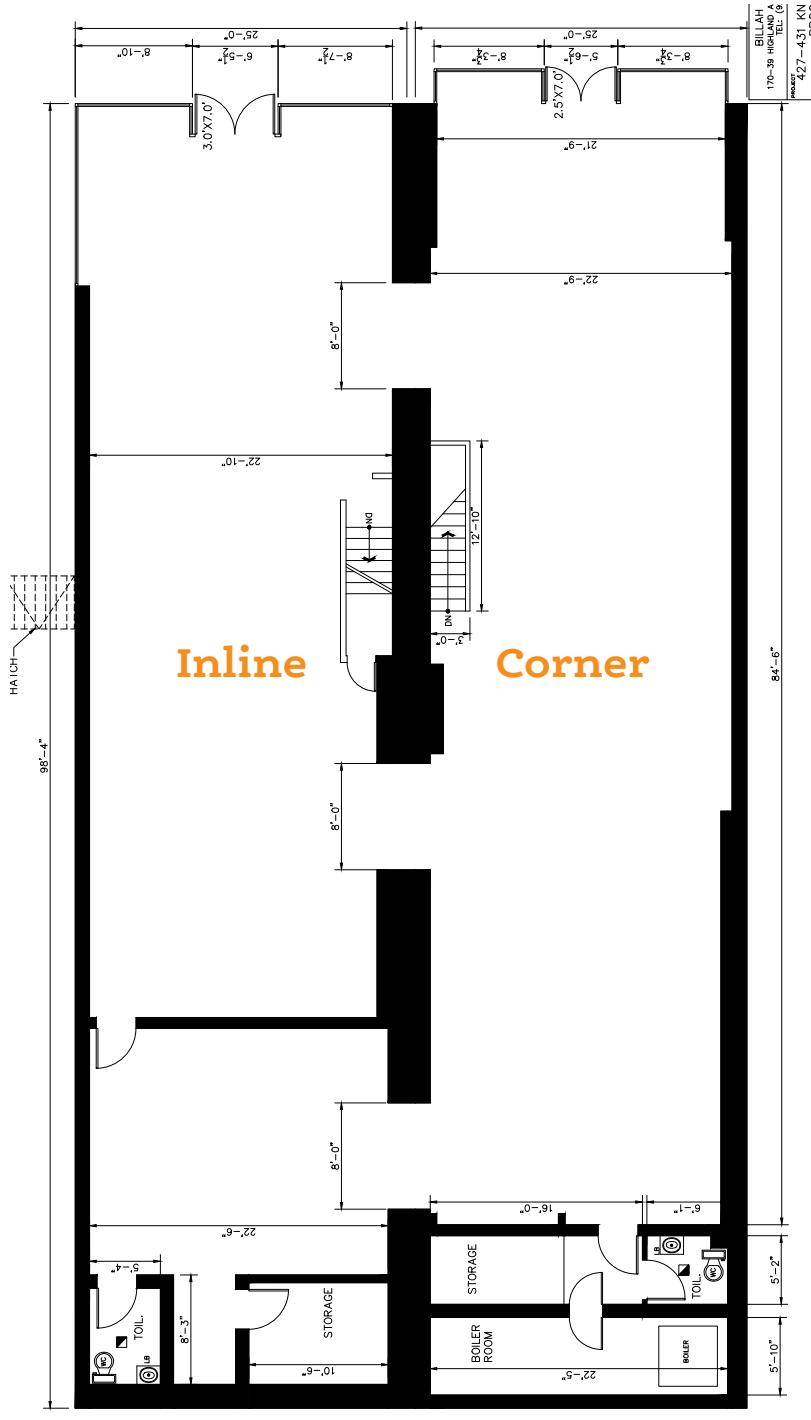
Knickerbocker Ave 
 1,288,438 annual riders



BUSHWICK RETAIL OPPORTUNITY

427-31 KNICKERBOCKER AVE

Located at the Northeast corner of Harman Street



CONTACT EXCLUSIVE BROKERS

Cory G Zelnik
cory@zelnikco.com

Sean Philipps
sean@zelnikco.com

Michael Peguero
michael@zelnikco.com

Zelnik & Company LLC
ph: (212) 223-2200

BUSHWICK RETAIL OPPORTUNITY

427-31 KNICKERBOCKER AVE

Located at the Northeast corner of Harman Street



STANHOPE STREET

Bank of America

boost mobile

La Moda Chocolate

T-Mobile

EBGAMES™

kids Foot Locker

CITYMD
NEW YORK'S URGENT CARE

blink FITNESS

MODELL'S

Recently Signed Leases

KNICKERBOCKER AVENUE

HIMROD STREET

Foot Locker

SHOPPERS WORLD
Always New, Always for Less!

Annual Sales North of \$2,000,000

McDonald's

fabco shoes

Glory Shoes
Hyperactive

JIMMYJAZZ

PORTABELLA

427-31
KNICKERBOCKER AVE

MYRTLE AVENUE

HARMAN STREET

V.I.M.

Fruitti Yummi
FROZEN YOGURT

BLUE CITY

Mini Max

KICKSUSA

Tony's

KNICKERBOCKER AVE
1,288,438 annual riders **M** SUBWAY ENTRANCE

GREENE STREET

BURGER KING

QDOBA MEXICAN EATS

H&R BLOCK

LA ISLA

DUNKIN' DONUTS

FAMOUS BRANDS

citibank

BLEECKER STREET