



LAND FOR SALE

VACANT LOT FOR SALE | 1475 N. NATIONAL AVE, SPRINGFIELD, MO 65802

- Located near Drury University, OTC, and Cox North
- Ideal for retail, office, or redevelopment

EST. 1909

2225 S. Blackman Road
Springfield, MO 65809
417.881.0600

Ross Murray, SIOR, CCIM
417.881.0600
ross@rbmurray.com

rbmurray.com

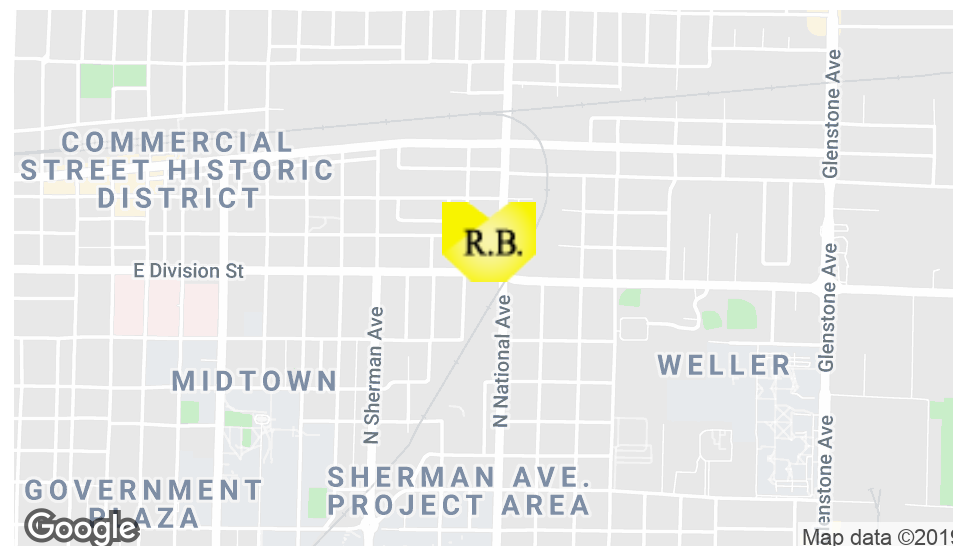
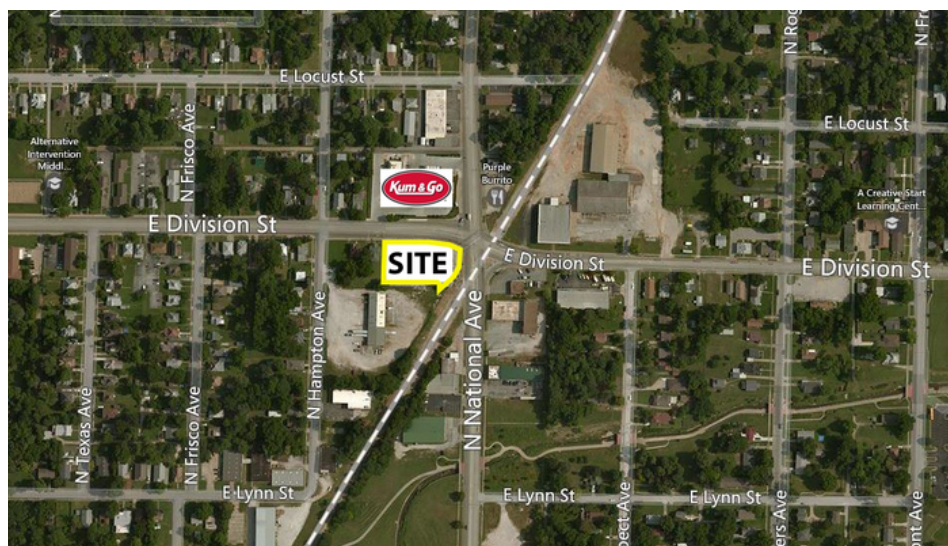
R.B. | MURRAY COMPANY
SINCE 1909
COMMERCIAL & INDUSTRIAL REAL ESTATE

LAND FOR SALE

VACANT LOT FOR SALE 1475 N. NATIONAL AVE, SPRINGFIELD, MO 65802

100 Years
SINCE 1909

Executive Summary



PROPERTY SUMMARY

Sale Price:	\$350,000 / \$9.68 PSF
Taxes:	\$2,309.09 (2019)
Available:	Immediately
Lot Size:	0.83± Acres
Zoning:	General Retail
Cross Streets:	National and Division
Utilities:	All available

The information listed above has been obtained from sources we believe to be reliable; however, we accept no responsibility for its accuracy.

PROPERTY OVERVIEW

Ideal retail corner pad site for sale in North Central Springfield MO. Prior retail building has been removed and the property is being sold as a retail pad site. The property is located blocks from Drury University, OTC, and Cox North. It's also located next to Smith Park (a local park). The property is ideal for retail, office, or redevelopment. For more information please contact listing agent.

PROPERTY HIGHLIGHTS

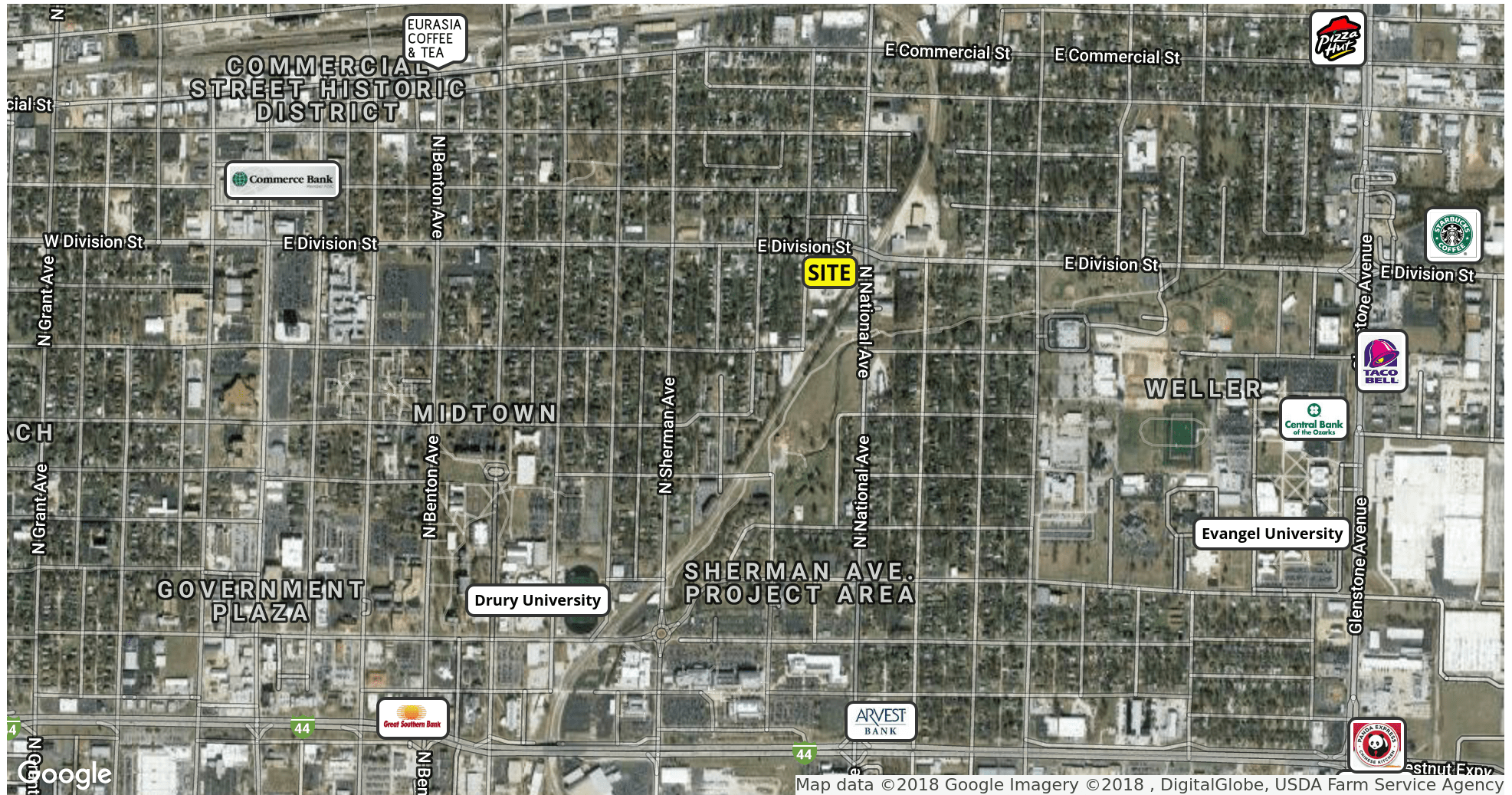
- Located near Drury University, OTC, and Cox North.
- Ideal for retail, office, or redevelopment

LAND FOR SALE

VACANT LOT FOR SALE
1475 N. NATIONAL AVE, SPRINGFIELD, MO 65802



Retailer Map

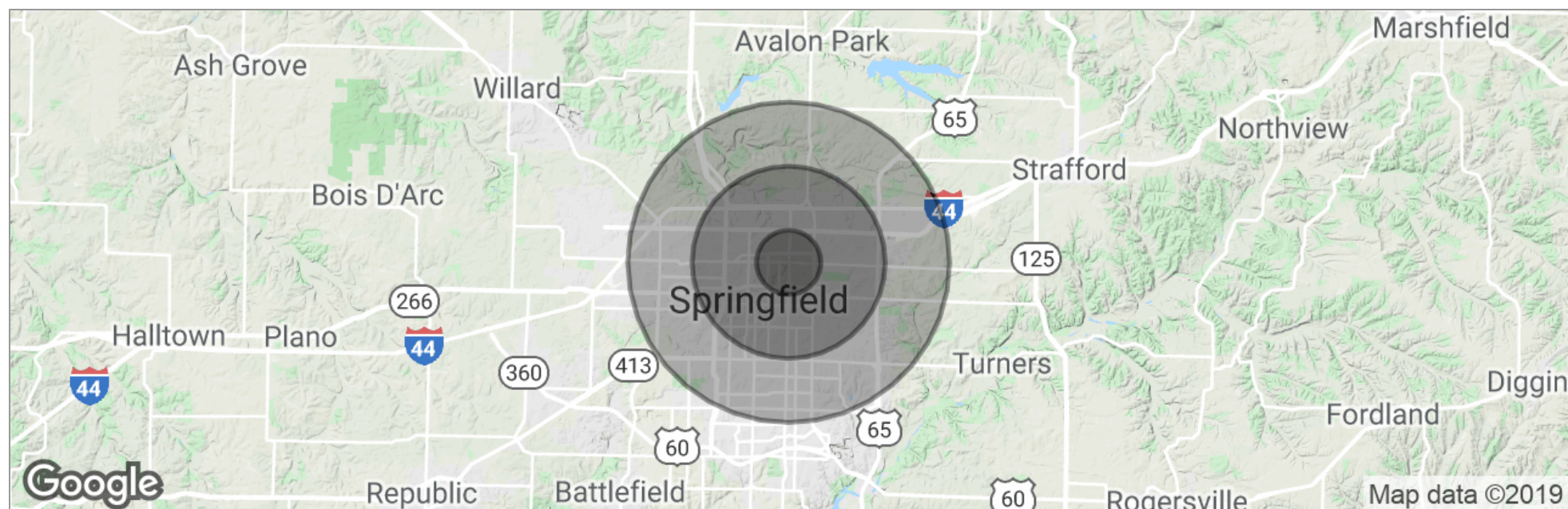


LAND FOR SALE

VACANT LOT FOR SALE
1475 N. NATIONAL AVE, SPRINGFIELD, MO 65802

100 Years
SINCE 1909

Demographics Map



	1 Mile	3 Miles	5 Miles
Total Population	10,823	75,322	155,872
Population Density	3,445	2,664	1,985
Median Age	24.8	30.2	33.6
Median Age (Male)	25.8	30.0	32.5
Median Age (Female)	24.5	30.7	34.7
Total Households	3,445	30,598	67,150
# of Persons Per HH	3.1	2.5	2.3
Average HH Income	\$33,985	\$37,618	\$41,232
Average House Value	\$91,699	\$119,944	\$117,857

* Demographic data derived from 2010 US Census

Advisor Bio

ROSS MURRAY, SIOR, CCIM
President

2225 S. Blackman Road
Springfield, MO 65809

T 417.881.0600
C 417.861.9486
ross@rbmurray.com
MO #2004035357

Professional Background

Ross Murray is committed to carrying on the third generation of the family legacy. He studied at the University of Mississippi (Ole Miss) and graduated with distinction from Drury University with a degree in marketing and a minor in world studies. He earned designations with the Society of Industrial Realtors (SIOR) and Certified Commercial Investment Member (CCIM) through graduate-level training, high sales /lease volumes, and a demonstration of professionalism and ethics only showcased by industry experts. He is the only broker in Southwest Missouri besides his father, David Murray, to hold both SIOR and CCIM designations. Ross has the knowledge and experience to be a trusted and strategic real estate partner while specializing in investment sales, industrial, retail, office, and vacant land sales and leasing.

Since the industry downturn Ross has brokered many significant investment transactions totaling over 2,000,000 square feet. Notable transactions include the Town & Country Shopping Plaza, a national FedEx facility, Super Center Plaza Shopping Center, the Regional Headquarters for Wellpoint Blue Cross Blue Shield, University of Phoenix Regional Campus, and French Quarter Plaza.

Ross was recently selected as an honoree of one of the Springfield Business Journal's 2014 "40 Under 40" for being one of Springfield's brightest and most accomplished young business professionals. His current marketing projects include Project 60/65, a mixed-use development that covers 600 acres in Southeast Springfield, and the TerraGreen Office Park, one of the first sustainable LEED concept office developments in the area. Check out www.terragreenoffice.com for information. His most recent project is the 156,000 SF lifestyle mixed-use development known as Farmers Park. To learn more visit www.farmersparkspringfield.com.

Ross exhibits a dedication to the community by donating his time to local charities and business groups. He is a board member of the Springfield Workshop Foundation, as well as the Springfield News Leader's economic advisory council, the Springfield Executives Partnership, Hickory Hills Country Club Board of directors, the Springfield Area Chamber of Commerce, International Council of Shopping Centers, and the Missouri Association of Realtors.

Memberships & Affiliations

Society of Industrial and Office Realtors (SIOR); Certified Commercial Investment Member (CCIM)