

# 13404 Woodruff Avenue

Bellflower, CA 90706

**FOR LEASE** RETAIL SPACE



Charles Dunn

**CONTACT:**

**TRACY TAFT**

Director

CalBRE #00903455

Direct | 213.270.6207

[ttaft@charlesdunn.com](mailto:ttaft@charlesdunn.com)

**CHARLES DUNN COMPANY, INC.**

800 West 6th Street, Suite 800 | Los Angeles, CA 90017 | Lic. #01201641 | [charlesdunn.com](http://charlesdunn.com)

# PROPERTY DETAILS

Foster Square is a 20,600 square foot retail strip center on 57,064 square feet of land on the southeast corner of Woodruff Avenue and Foster Road in the City of Bellflower. The center was built in 1969 and was recently renovated. Foster Square wraps an independent gas station and has 59 surface parking spaces.

## PROPERTY FACTS

Price: Negotiable

Parking: 2.77/1000

## PROPERTY HIGHLIGHTS

- > Recently renovated exterior
- > Located on Signalized Corner
- > Only Retail Center in immediate area
- > Highly trafficked intersection



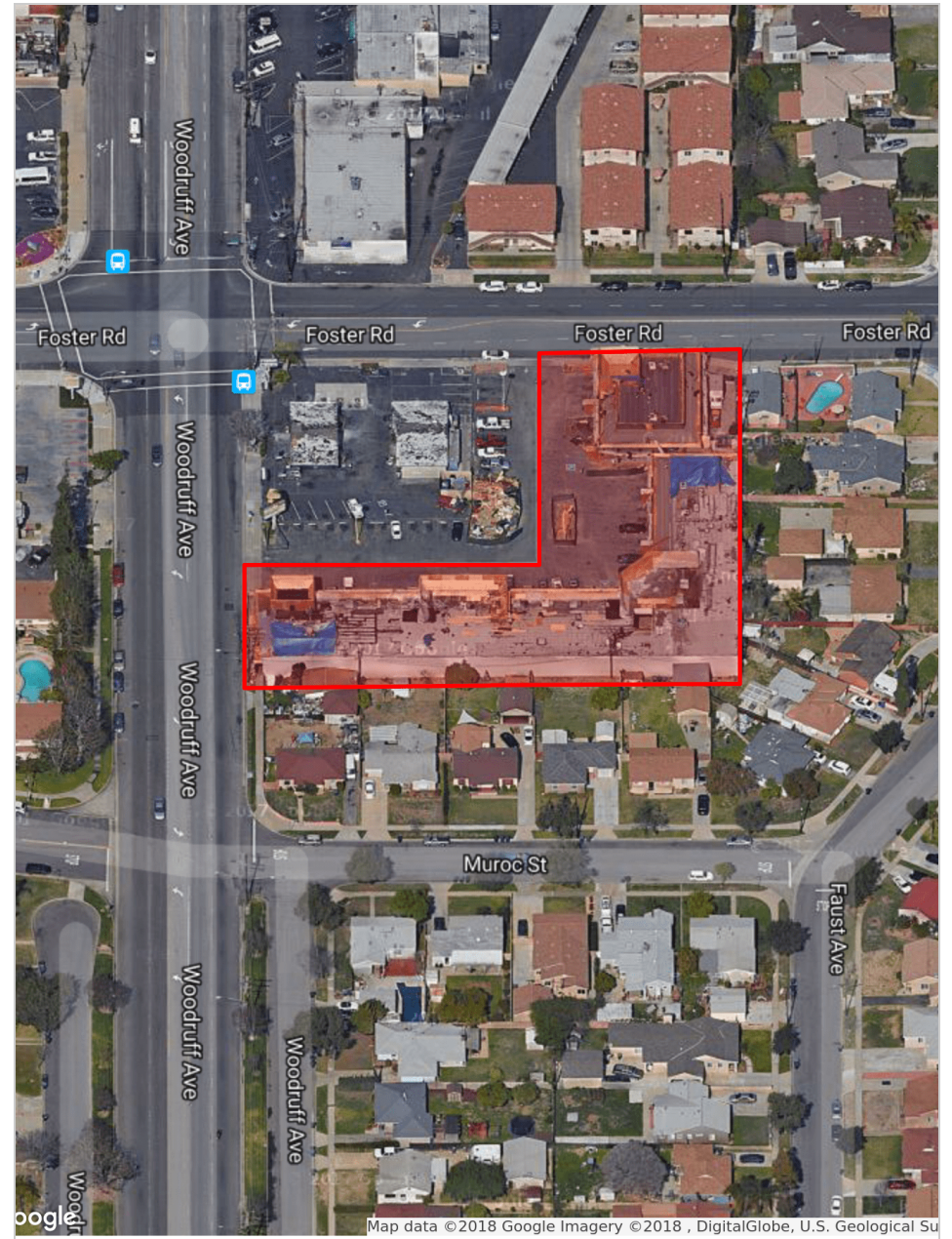
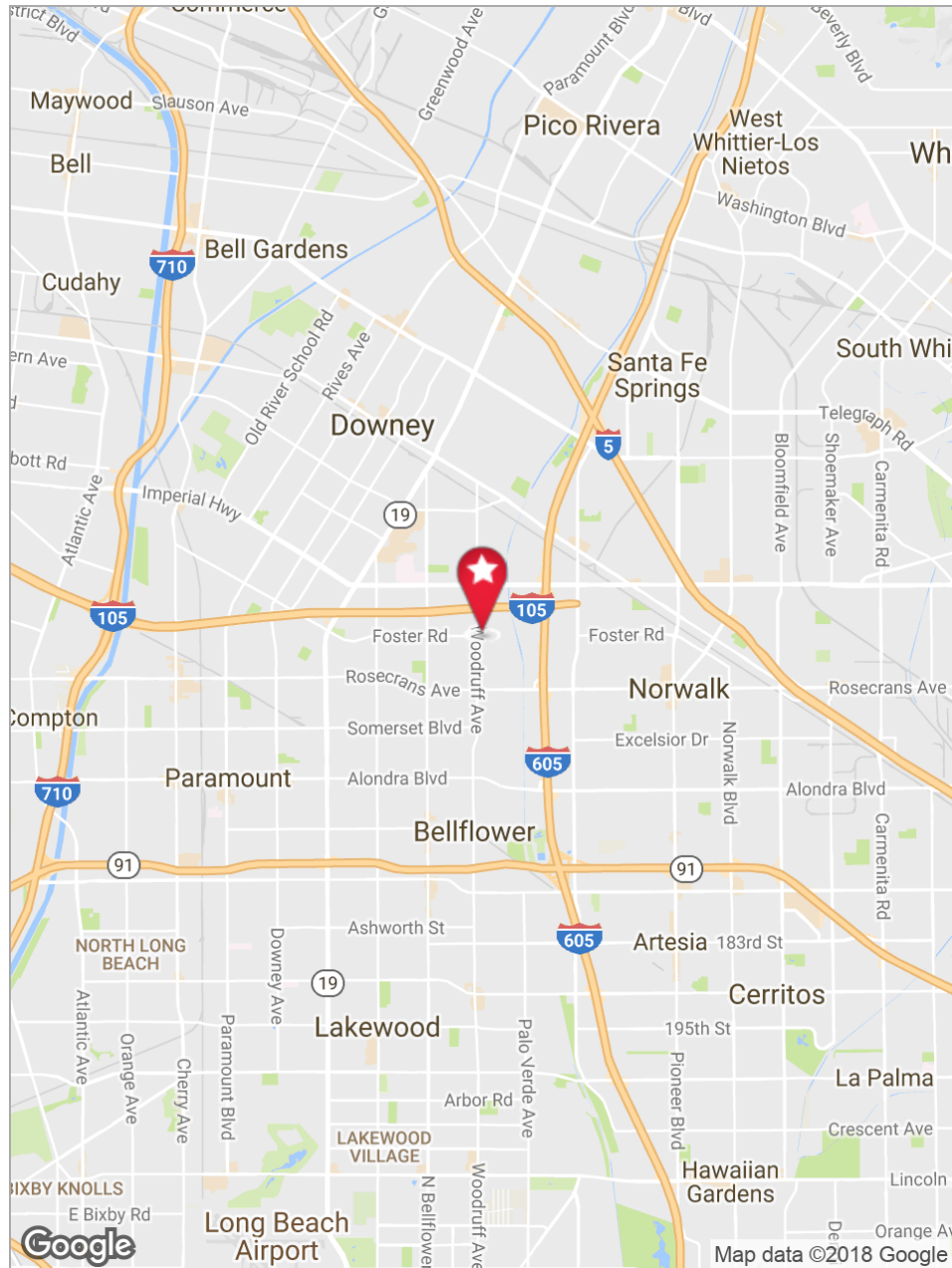
# AVAILABILITIES

SPACE AVAILABILITY	SIZE
Suite 13404	± 960 sq ft
Suite 13408	± 480 sq ft
Suite 13416	± 1,360 sq ft
Suite 13420	± 800 sq ft
Suite 13421	± 600 sq ft
Suites 13420 - 13421 (can be combined)	± 1,400 sq ft
Suite 13426	± 1,000 sq ft





# PROPERTY MAPS







# PROPERTY PHOTOS





# RENDERING



# 13404 Woodruff Avenue

## Bellflower, CA 90706

**TRACY TAFT**

Director

CalBRE #00903455

Direct | 213.270.6207

ttaft@charlesdunn.com

**Charles Dunn Company, Inc. | 800 West 6th Street, Suite 800 | Los Angeles, CA 90017 | Lic. #01201641 | charlesdunn.com**

© Charles Dunn Company, Inc. These materials are based on information and content provided by others which we believe are accurate. No guarantee, warranty or representation is made by the Charles Dunn Company or its personnel, and all interested parties must independently verify its accuracy and completeness. As well, any projections, assumptions, opinion, or estimates are used for example only and do not represent the current or future performance of the identified property. Your tax, financial, legal and toxic substance advisors should conduct a careful investigation of the property and its suitability for your needs, including land use limitations.