

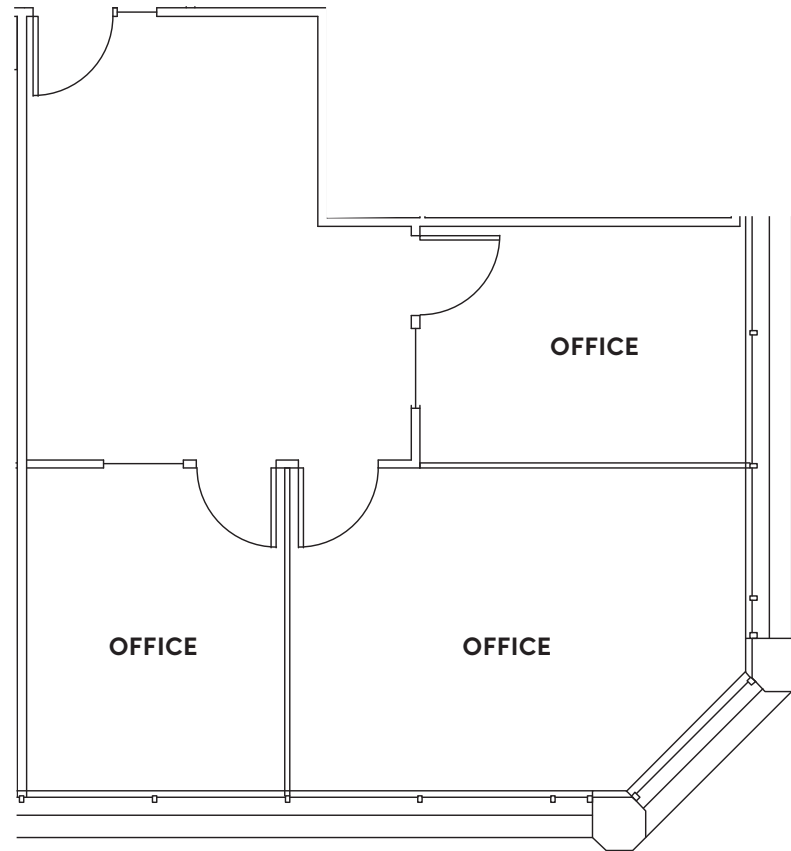


SUITE 609

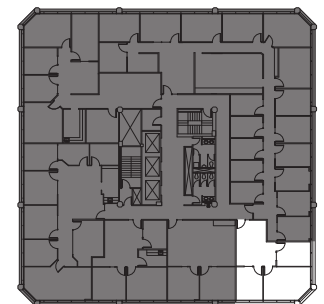
879 SF

Three (3) private offices

Available March 1, 2024



[SEE ENLARGED FLOOR PLAN](#)



KEY BANK BUILDING

10655 NE 4TH STREET • BELLEVUE, WA



For further information please contact exclusive leasing agents:

MATT SCHRECK

425.646.5232

schreck@broderickgroup.com

COLIN TANIGAWA

425.274.4283

tanigawa@broderickgroup.com

[↑ BACK TO AVAILABLE](#)