



# 2461 Mission St

San Marino, California 91108

## Lease Highlights

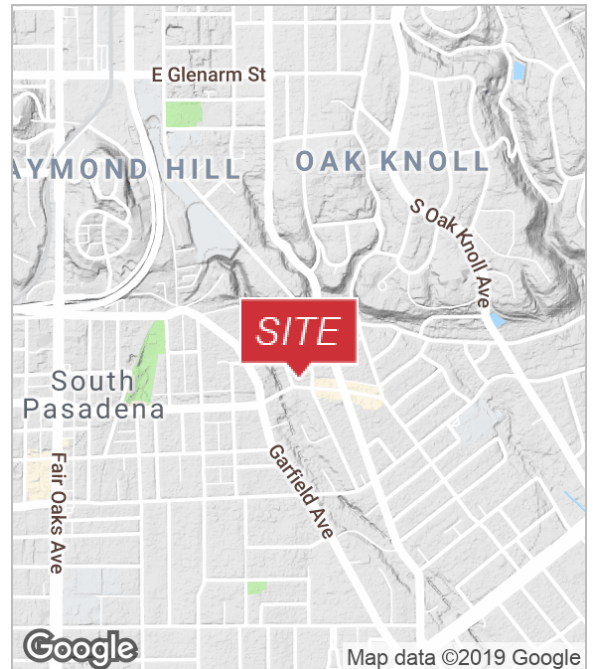
- New Construction - Lease now & possibly build to suit
- Hot Retail Corridor
- Strong Demographics

## Property Description

Brand new Spanish construction on Mission Street. Join Julienne's, Port O' Call, P.M. Jacoy Menswear, David Orgell San Marino, and come to this charming community. Draw upon the affluent residents of San Marino and the surrounding communities to make your business a success.

## Available Spaces

Spaces	Lease Rate	Size (SF)
2461 Mission St	Negotiable	2/1250 SF



For more information

**James Houghton**

O: 626.204.1522

jhoughton@naicapital.com | CalDRE #00666326

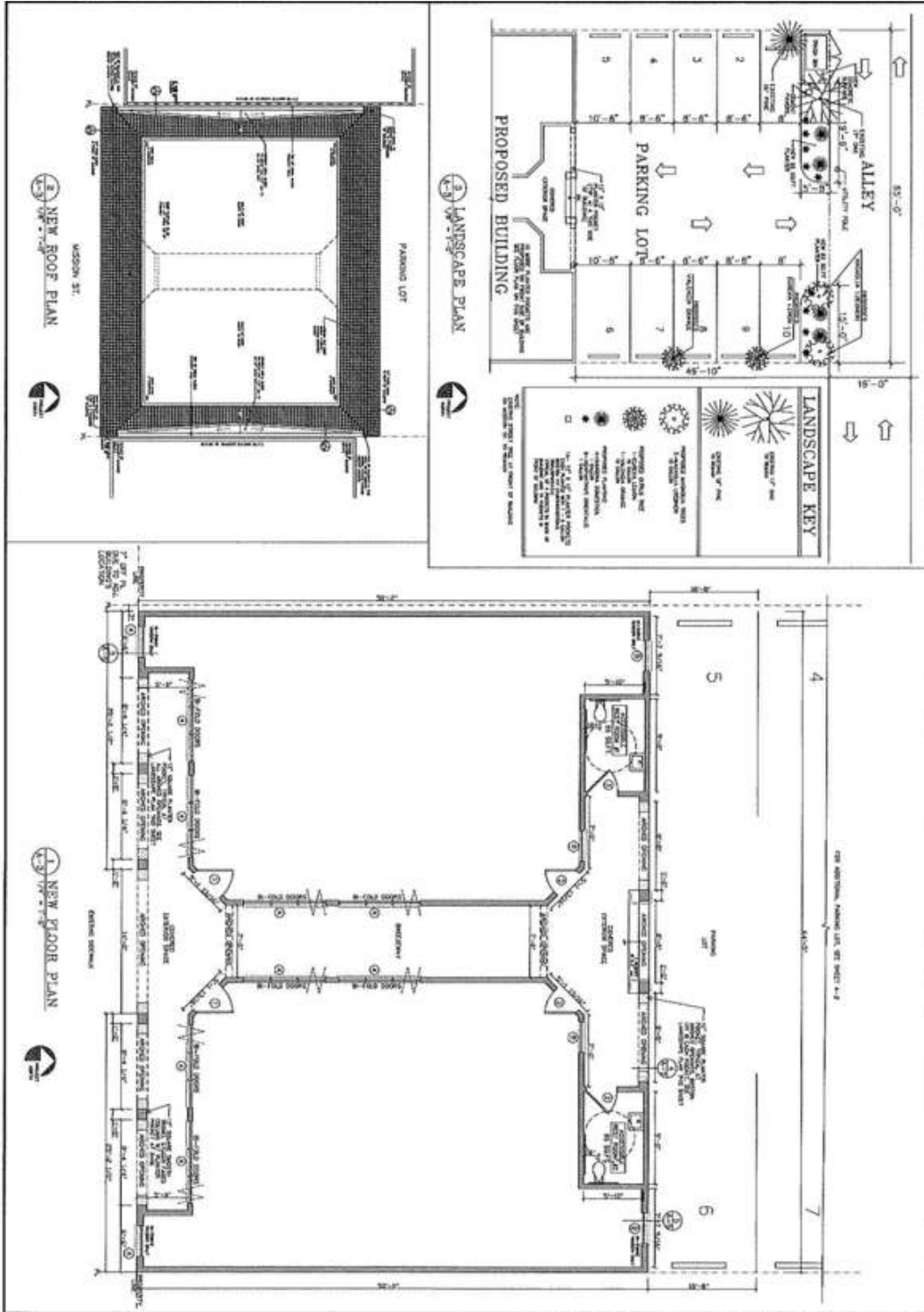
**Sheri McCanless**

O: 626.204.1508

smccanless@naicapital.com | CalDRE #01306519

For Lease

# 2461 Mission St



**James Houghton**  
626.204.1522  
jhoughton@naicapital.com  
CalDRE #00666326

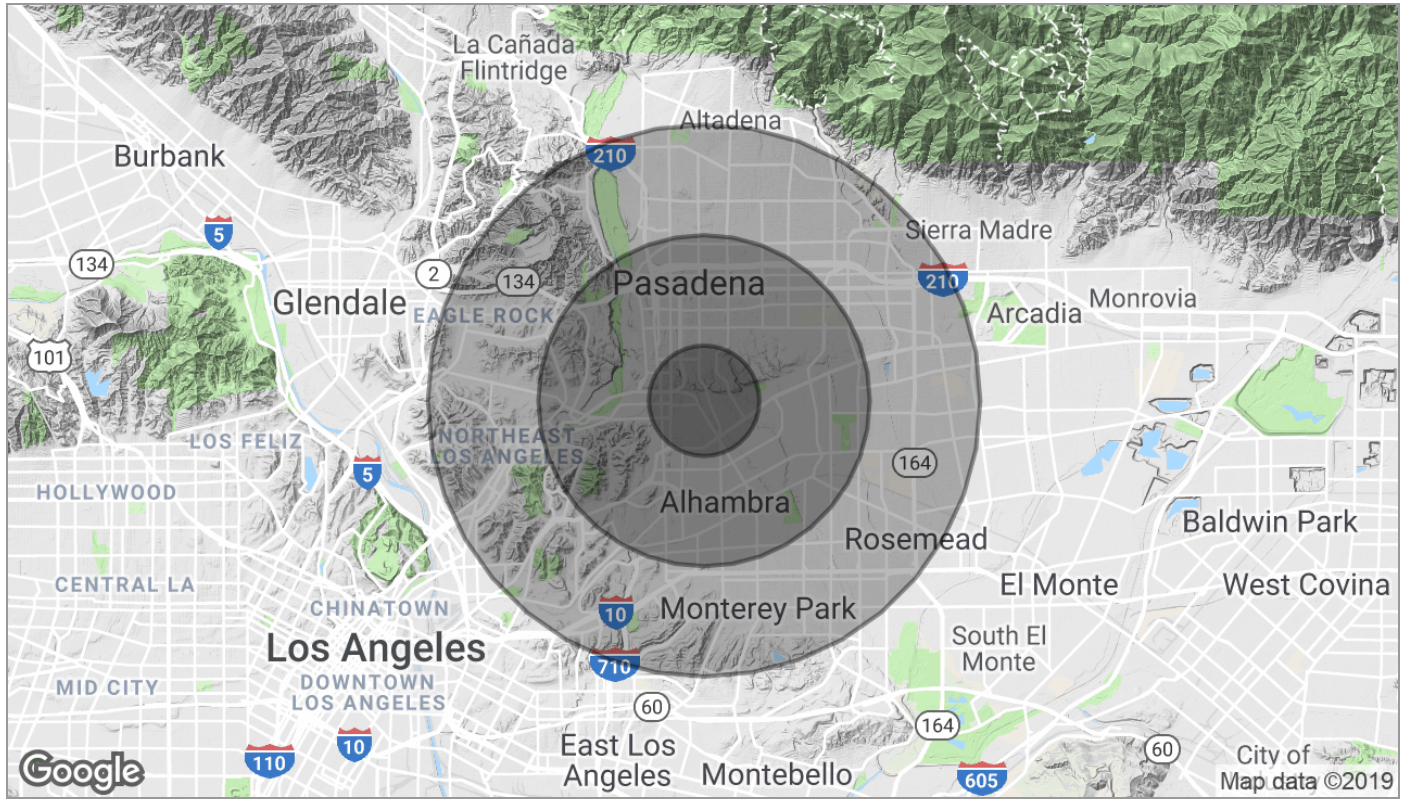
**Sheri McCanless**  
626.204.1508  
smccanless@naicapital.com  
CalDRE #01306519





For Lease

# 2461 Mission St



	1 Mile	3 Miles	5 Miles
<b>Population</b>			
TOTAL POPULATION	18,039	232,258	652,921
MEDIAN AGE	39.7	37.6	37.5
MEDIAN AGE (MALE)	39.9	36.5	36.3
MEDIAN AGE (FEMALE)	39.2	38.5	38.7
<b>Households &amp; Income</b>			
TOTAL HOUSEHOLDS	7,517	89,417	221,335
# OF PERSONS PER HH	2.4	2.6	2.9
AVERAGE HH INCOME	\$137,312	\$92,330	\$82,902
AVERAGE HOUSE VALUE	\$891,725	\$711,789	\$620,001
<b>Race</b>			
% WHITE	64.2%	48.3%	44.2%
% BLACK	1.6%	3.4%	4.2%
% ASIAN	27.0%	32.7%	32.8%
% HAWAIIAN	0.1%	0.2%	0.2%
% INDIAN	0.2%	0.4%	0.5%
% OTHER	3.8%	12.2%	15.4%
<b>Ethnicity</b>			
% HISPANIC	18.2%	33.3%	39.2%

\* Demographic data derived from 2010 US Census

**James Houghton**  
626.204.1522  
jhoughton@naicapital.com  
CalDRE #00666326

**Sheri McCanless**  
626.204.1508  
smccanless@naicapital.com  
CalDRE #01306519