



OFFICE & MEDICAL SPACE AVAILABLE

**FOR
LEASE**

CORPORATE CENTER OF MIDDLEBURG

17535 ROSBOUGH BOULEVARD,
MIDDLEBURG HEIGHTS, OHIO 44130

PROPERTY INFORMATION

- 2nd Floor office space available for immediate occupancy
- Suites ranging from 1,600 to 8,100 RSF
- Newly finished 1st Floor common area conference room with seating for 18
- Abundant surface parking available
- **\$16.50 per RSF Modified Gross Rent**

LOCATION HIGHLIGHTS

- One half mile to Interstate 71 interchange at Bagley Road
- High visibility building with pylon signage availability
- Immediately proximate to many quick service restaurants, hotels and Southwest General Health Center
- Less than 10-minute drivetime to Cleveland Hopkins International Airport

CONTACT US

JONATHAN ELSON

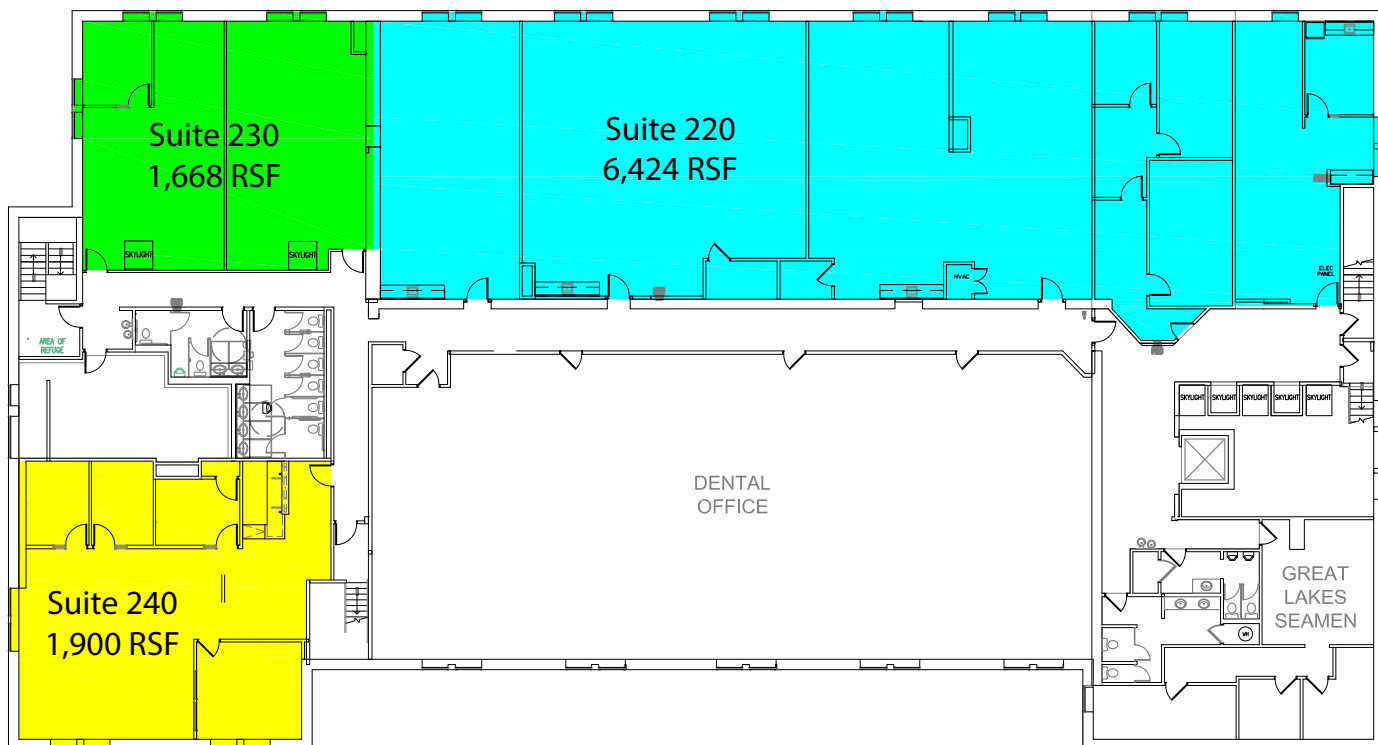
Vice President
216.609.0305
jonathan.elson@avisonyoung.com

MATTHEW KOVESDY

Associate
216.609.0310
matt.kovesdy@avisonyoung.com

**AVISON
YOUNG**

FLOOR PLAN



03/27/19



Hengst Streff Bajko
Architects + Engineers
Cleveland, OH Scottsdale, AZ
HSBarch.com 216.586.0229

Second Floor

17535 Rosbough Blvd.
Middleburg Heights, Ohio



Not to Scale

CONTACT US

JONATHAN ELSON

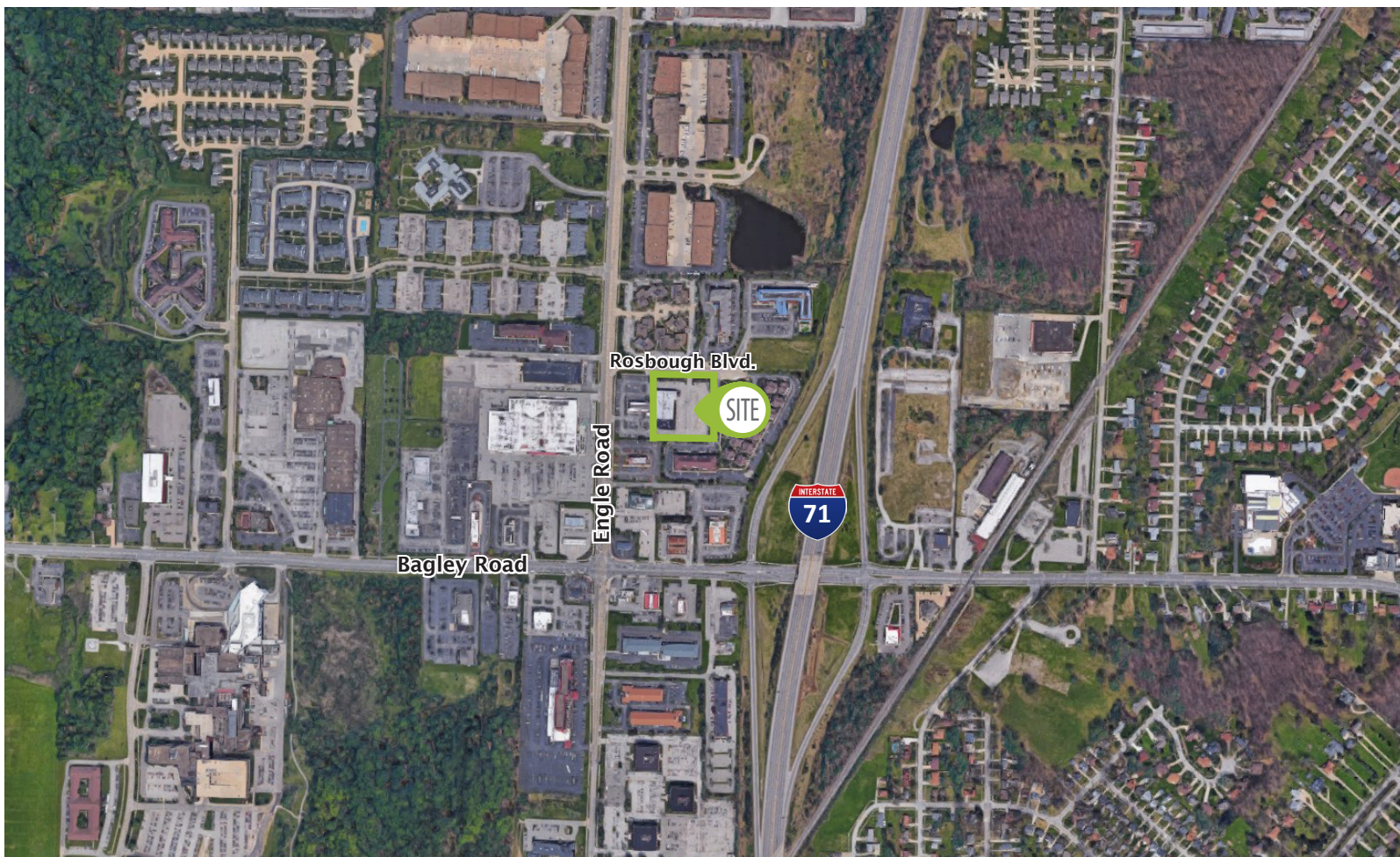
Vice President
216.609.0305
jonathan.elson@avisonyoung.com

MATTHEW KOVESDY

Associate
216.609.0310
matt.kovesdy@avisonyoung.com



PROPERTY AERIAL



CONTACT US

JONATHAN ELSON

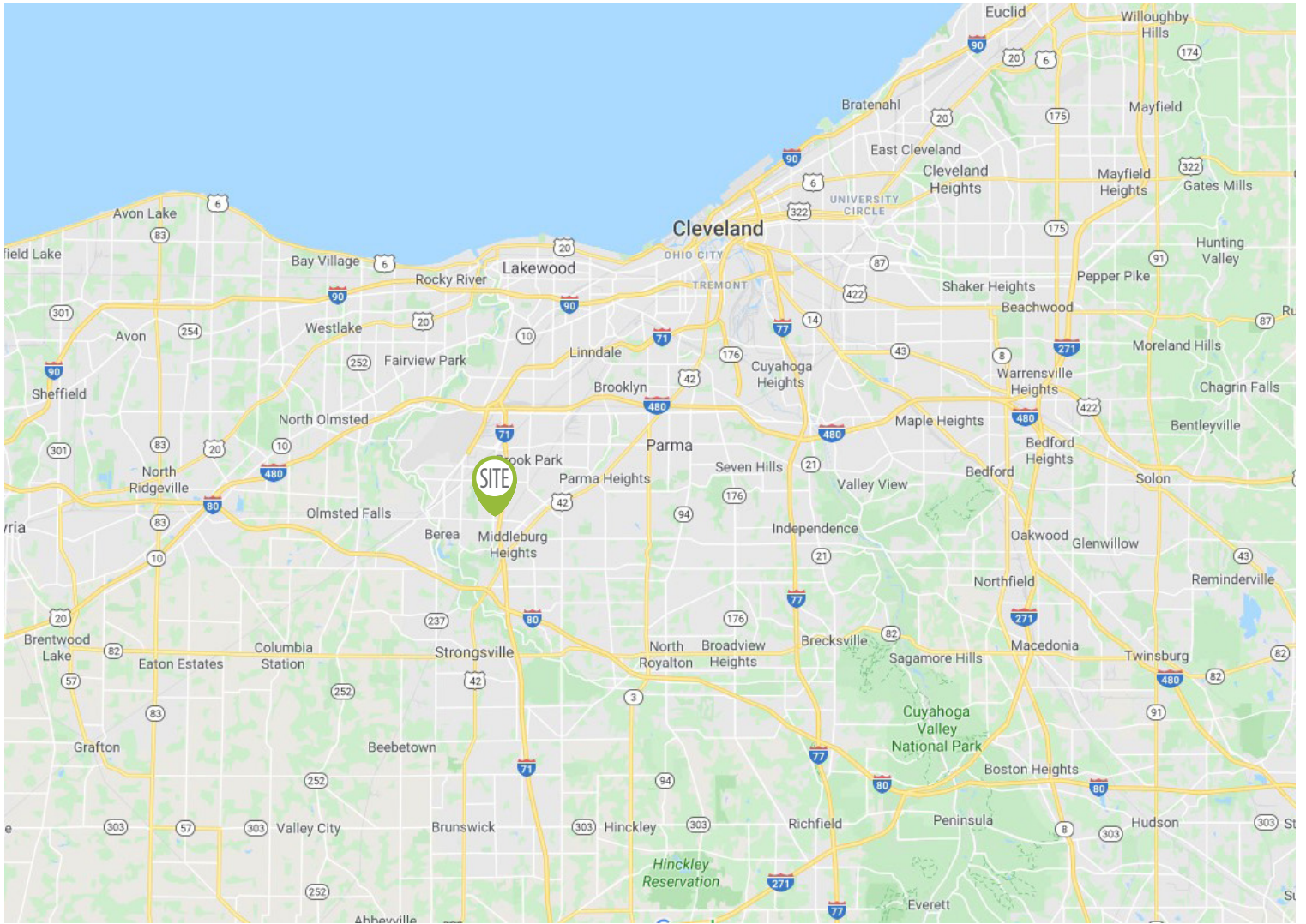
Vice President
216.609.0305
jonathan.elson@avisonyoung.com

MATTHEW KOVESDY

Associate
216.609.0310
matt.kovesdy@avisonyoung.com

**AVISON
YOUNG**

LOCATION



CONTACT US

JONATHAN ELSON

Vice President
216.609.0305
jonathan.elson@avisonyoung.com

MATTHEW KOVESDY

Associate
216.609.0310
matt.kovesdy@avisonyoung.com

